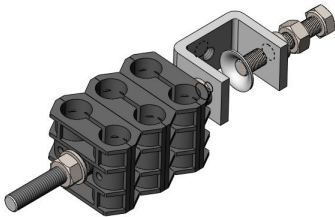


Feeder Cable Clamp, 6 holes, 6x1/2”S

- Easy and quick installation
- Robust design & material for outdoor use
- Operation Temperature -40~85 °C



Classification	
Item Number	6003166
Part number	-
Detail Description	Feeder cable clamp, for 6x1/2” superflex cable
General Specifications	
Metal Material	Stainless Steel 304
Metal Color	Natural
Block Material	PP
Block Color	Black
Mounting	M8 Hardware
Cables Per Hanger	6
Dimensions	
Height	36.0 mm 1.42 in
Width	44.5 mm 1.75 in
Length	190.0 mm 7.48 in
Threaded Rod Length	120.0 mm 4.72 in
Compatible Cable OD, maximum	14.0 mm 0.55 in
Compatible Cable OD, minimum	13.0 mm 0.51 in
Environmental Specifications	
Operating Temperature	-40°C to +85°C(-40°F to+185°F)
Environmental Strength Capability	Double Cable Weight
UV Resistance	≥720 Hours, base on ISO4892.3-1994
Packaging and Weights	
Height, Packed	320 mm 12.60 in
Width, Packed	220 mm 8.66 in
UOM	1 Pcs



Packaging	Bag
Weight, Gross	0.182 kg 0.401 lbs
Certifications and Compliance	
ISO 9001:2015	Designed, manufactured and/or distributed under this quality management system
RoHS	Compliant

