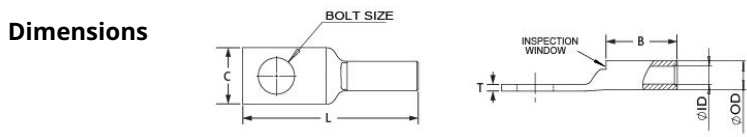


Copper Lug, AWG 2#, one hole 1/2", standard barrel, with inspection window, brown

- Copper cable lugs are designed for connecting copper cables, coils and Bus-bars.
- Copper Tube Terminals between 6mm² & 800mm² have bell entry to ensure easy entry even for flexible conductors.
- Incorporates inspection window to check the correct cable positioning.
- The barrel length has been designed to allow easy and accurate positioning of the dies during the crimping operation.
- "colour code" help choose the right connector, the colour name is also printed in order to avoid problems for those who are colour-blind.



Product Classification	
Item Number	6009308
Part Number	-
Detail Description	Copper Lug, AWG 2# , one hole 1/2", standard barrel, with inspection window, brown
General Specifications	
Colour	Brown
Material	Copper
Tongue Type	Standard
Tongue Angle	Straight
Surface	Tin-plated
Inspection Window	With inspection window



Dimensions	
Bolt Size	1/2 in 13.4 mm
Tang Width (C)	0.73 in 18.5 mm
Barrel length (B)	0.88 in 22.4 mm
Overall length (L)	2.32 in 58.9 mm
Inner diameter (ID)	0.31 in 7.9 mm
Outer diameter (OD)	0.42 in 10.7 mm

Electrical Specifications	
Rating - Maximum Voltage	35KV

For more information, please visit:
www.maxdao.com



©Maxdao Inc. All rights reserved.
 The information contained herein is subject to change without notice. We reserve the right to make technical changes or modify the contents of this document without prior notice.
 Revised: Aug 30, 2024
 Public

Environmental Specifications

Operating Temperature	-40 °C to +90°C (-40 °F to +212 °F)
Storage Temperature	-40 °C to +80 °C (-40 °F to +176 °F)

Packaging and Weights

Included	Lug
Packaging Quantity and UOM	1 pcs
Piece Weight	0.037 lb 0.017 kg

Certifications and Certificated

ISO 9001:2015	Designed, manufactured and/or distributed under this quality management system
RoHS	Compliant
UL	Compliant

