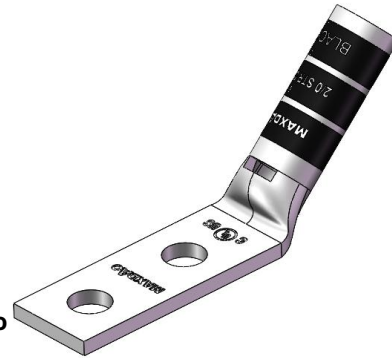


## 45° Copper Lug, AWG 2/0#, two hole 3/8” , hole spacing 1 “,standard barrel, with inspection window,black

- Copper cable lugs are designed for connecting copper cables, coils and Bus-bars.
- Copper Tube Terminals between 6mm<sup>2</sup> & 800mm<sup>2</sup> have bell entry to ensure easy entry even for flexible conductors.
- Incorporates inspection window to check the correct cable positioning.
- 45 degree standard barrel for limited space applications.
- "colour code" help choose the right connector, the colour name is also printed in order to avoid problems for those who are colour-blind.



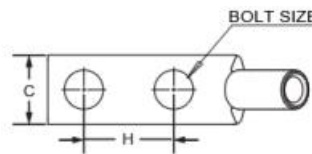
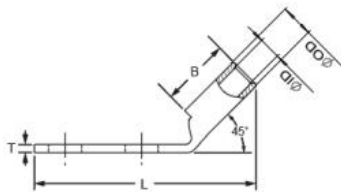
### Product Classification

Item Number	6009259
Part Number	-
Detail Description	45°Copper Lug, AWG 2/0#, two hole 3/8”, hole spacing 1”,standard barrel, with inspection window,black

### General Specifications

Colour	Black
Material	Copper
Tongue Type	Standard
Tongue Angle	45 degree
Surface	Tin-plated
Inspection Window	With inspection window

### Dimensions



Bolt Size	3/8 in   10.2 mm
Hole Spacing(H)	1.00 in   25.4 mm
Tang Width (C)	0.83 in   21.1 mm
Barrel length (B)	0.94 in   23.9 mm
Overall length (L)	2.83 in   71.9 mm
Inner diameter (ID)	0.45 in   11.4 mm
Outer diameter (OD)	0.56 in   14.2 mm

### Electrical Specifications

For more information, please visit:  
www.maxdao.com



©Maxdao Inc. All rights reserved.

The information contained herein is subject to change without notice. We reserve the right to make technical changes or modify the contents of this document without prior notice.

Revised: Aug 30, 2024  
Public

Rating - Maximum Voltage 35KV

---

### Environmental Specifications

---

Operating Temperature -40 °C to +90°C (-40 °F to +212 °F)

Storage Temperature -40 °C to +80 °C (-40 °F to +176 °F)

---

### Packaging and Weights

---

Included Lug

Packaging Quantity and UOM 1 pcs

Piece Weight 0.20 lb | 0.09 kg

---

### Certifications

---

ISO 9001:2015 Designed, manufactured and/or distributed under this quality management system

RoHS Compliant

UL Compliant

