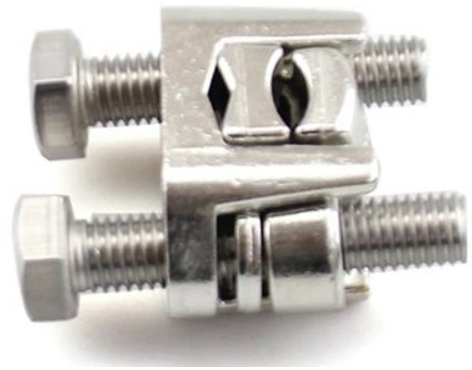


Mechanical Connector, Run 250 to 350 KCM, Tap #6 to 350 KCM

- Compact, high strength, tin plated copper alloy two pieces connector with spacer and Tin-plated
- Silicon bronze hardware, Recommended for heavy duty connections. Spacer separates Recommended with aluminum and ACSR



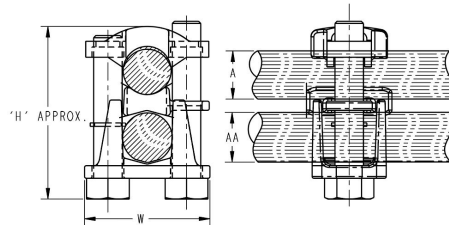
Product Classification

Material Number	6008294
Part Number	-
Detail Description	Mechanical Connector, Run 250 to 350 KCM, Tap #6 to 350 KCM

General Specifications

Material	Brass
Bolt Material	SS304
Surface	Tin-plated
Mounting Torque	36.7N • M

Dimensions



Aluminum Cable, Steel Reinforced

RUN "A"	4/0 (0.563 in)-300KCM (0.680 in) 14.30-17.27 mm
TAP "AA"	#6 (0.198 in)-300KCM (0.680 in) 5.03-17.27 mm

Galvanized Steel Stranded

RUN "A"	9/16 (0.565 in)-5/8 (0.621 in) 14.35-15.77 mm
TAP "AA"	3/16 (0.187 in)-5/8 (0.621 in) 4.75-15.77 mm

Copper & Copper weld Solid

RUN "A"	2/0 (0.365 in)-4/0 (0.460 in) 9.27-11.68 mm
TAP "AA"	#6 (0.162 in)-4/0 (0.460 in) 4.11-11.68 mm

Copper & Aluminum Stranded

For more information, please visit:
www.maxdao.com



©Maxdao Inc. All rights reserved.

The information contained herein is subject to change without notice. We reserve the right to make technical changes or modify the contents of this document without prior notice.

Revised: Feb 1, 2024

Public

DATASHEET

RUN "A"	250KCM (0.575 in)-350KCM (0.681 in) 14.61-17.30 mm
TAP "AA"	#6 (0.184 in)-350KCM (0.681 in) 4.67-17.30 mm
"H"Approx	2.62 in lb 66.55mm
Bolt Size	M12

Packaging and Weights

UOM	1 pcs
Packaging	Bag
Weight, gross	0.77 lb 0.35 kg

Certifications and Compliance

ISO 9001:2015	Designed, manufactured and/or distributed under this quality management system
RoHS	Compliant

