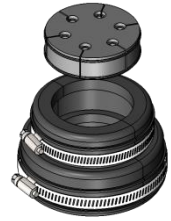


## 4" Entry Boot Kit, With Four Run Cushion, 6x(8.1-10.1)mm

- Used for installing entry panel



### Product Classification

Item Number	6008221
Part Number	-
Detail Description	4" Entry boot kit, with four run cushion, 6x(8.1-10.1)mm

### General Specifications

Rubber Material	EPDM
Hose Clamp Material	Stainless Steel
Suitable Entry Panel Port Size	101.6 mm   4 in
Cables Per Cushion	6

### Dimensions

Length	125.5 mm   4.9 in
Height	76.2 mm   3 in
Cushion Hole	8.1-10.1 mm   0.32-0.39 in

### Environmental Specifications

Operating Temperature	-40°C to +70 °C (-40 °F to +158 °F)
UV Resistance	≥1000 hours

### Packaging and Weights

Height, Packed	320 mm   5.90 in
Width, Packed	220 mm   3.94 in
Include	Two boots   Two hose clamps   One cushion
UOM	Pcs
Packaging	Bag
Weight, Gross	0.633 kg   1.395 lbs

### Certifications and Compliance

ISO 9001:2015	Designed, manufactured and/or distributed under this quality management system
---------------	--

---

RoHS

Compliant

---

**For more information, please visit:**  
[www.maxdao.com](http://www.maxdao.com)



**©Maxdao Inc. All rights reserved.**

The information contained herein is subject to change without notice. We reserve the right to make technical changes or modify the contents of this document without prior notice.

Revised: Aug 28, 2024

Public