

Copper Lug, AWG 12-10#, one hole 1/4", Non-insulated

- Copper cable lugs are designed for connecting copper cables, coils and Bus-bars.
- Copper Terminals between 0.15mm² & 240mm² have bell entry to ensure easy entry even for flexible conductors.
- Internal barrel serrations assure good wire contact and maximum tensile strength.
- Brazed seam protects terminal barrel from splitting during the crimp process.



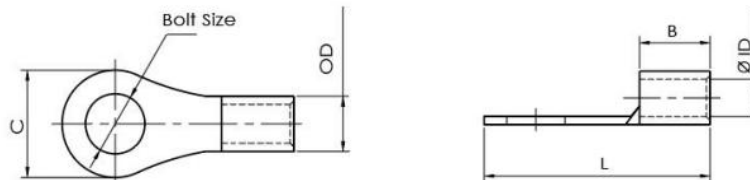
Product Classification

Item Number	6006916
Part Number	-
Detail Description	Copper Lug, AWG 12-10#, one hole 1/4", Non-insulated

General Specifications

Material	Copper
Tongue Type	Ring
Tongue Angle	Straight
Surface	Tin-plated

Dimensions



Bolt Size	0.25 in 6.4 mm
Tang Width (C)	0.47 in 12.0 mm
Barrel length (B)	0.27 in 6.8 mm
Overall length (L)	0.84 in 21.4 mm
Inner diameter (ID)	0.13 in 3.2 mm
Outer diameter (OD)	0.20 in 5.0 mm

Electrical Specifications

Rating - Maximum Voltage	600V
--------------------------	------

Environmental Specifications

Operating Temperature	-40 °C to +90°C (-40 °F to +212 °F)
-----------------------	-------------------------------------

For more information, please visit:
www.maxdao.com



©Maxdao Inc. All rights reserved.

The information contained herein is subject to change without notice. We reserve the right to make technical changes or modify the contents of this document without prior notice.

Revised: Aug 30, 2024

Public

Storage Temperature -40 °C to +80 °C (-40 °F to +176 °F)

Packaging and Weights

Included Lug
Packaging Quantity and UOM 1 pcs
Piece Weight 0.01 lb | 0.004 kg

Certifications and Compliance

ISO 9001:2015 Designed, manufactured and/or distributed under this quality management system
RoHS Compliant

