

Copper Lug, AWG 2#Solid, one hole 1/4", long barrel, without inspection window,gray

- Copper cable lugs are designed for connecting copper cables, coils and Bus-bars.
- Copper Tube Terminals between 6mm² & 800mm² have bell entry to ensure easy entry even for flexible conductors.
- The absence without inspection window prevents the entry of water or moisture into the crimped joint making these terminals suitable for outdoor applications.
- "colour code" help choose the right connector, the colour name is also printed in order to avoid problems for those who are colour-blind.



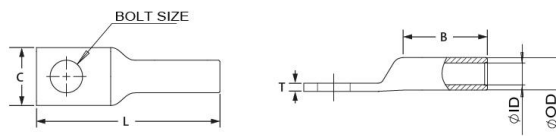
Product Classification

Item Number	6006684
Part Number	-
Detail Description	Copper Lug, AWG 2#Solid, one hole 1/4", long barrel, without inspection window,gray

General Specifications

Colour Code	Gray
Material	Copper
Tongue Type	Standard
Tongue Angle	Straight
Surface	Tin-plated
Inspection Window	Without inspection window

Dimensions



Bolt Size	1/4 in 6.9 mm
Tang Width (C)	0.50 in 14.0mm
Barrel length (B)	1.12 in 29.2 mm
Overall length (L)	2.02 in 54.9 mm
Inner diameter (ID)	0.28 in 7.2 mm
Outer diameter (OD)	0.38 in 10.7 mm

Electrical Specifications

Rating - Maximum Voltage	35KV
--------------------------	------

Environmental Specifications

For more information, please visit:
www.maxdao.com



©Maxdao Inc. All rights reserved.

The information contained herein is subject to change without notice. We reserve the right to make technical changes or modify the contents of this document without prior notice.

Revised: Aug 30, 2024
Public

Operating Temperature -40 °C to +90°C (-40 °F to +212 °F)

Storage Temperature -40 °C to +80 °C (-40 °F to +176 °F)

Packaging and Weights

Included	Lug
Packaging Quantity and UOM	1 pcs
Piece Weight	0.035 lb 0.016 kg

Certifications and Certificated

ISO 9001:2015	Designed, manufactured and/or distributed under this quality management system
RoHS	Compliant
UL	Compliant

