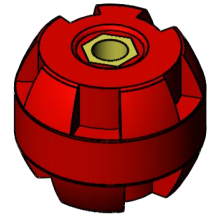


Standoff Insulators, With 3/8" Brass Insert

- Provides electrical insulation and mechanical support in a wide variety of assemblies
- Used to busbar supports by providing insulation between a conductor and a mounting surface



Product Classification

Item Number	6004285
Part Number	-
Detail Description	Standoff Insulators, With 3/8" Brass Insert

General Specifications

Material	BMC
Insert Material	Brass

Dimensions

Outer Diameter	44.5 mm 1.75 in
Height	35 mm 1.37 in

Environmental Specifications

Operating Temperature	-30 °C to +105 °C (-22 °F to +221 °F)
Flame Resistant	UL94 V-2

Electrical Specifications

Voltage	600 V
Short Time Electrical Strength	1000 V

Packaging and Weights

Height, Packed	150 mm 5.90 in
Width, Packed	100 mm 3.93 in
UOM	Pcs
Packaging	Bag
Weight, Gross	0.085 kg 0.187 lbs

Certifications and Compliance

ISO 9001:2015	Designed, manufactured and/or distributed under this quality management system
RoHS	Compliant