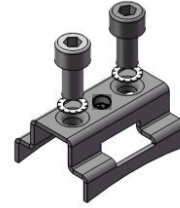


Socle With 2xM6 Hexagon Socket Head Screw, SS304

- Manufactured by stainless steel
- Excellent for outdoor & indoor use
- Install with banding or Hose Clamps



Product Classification

Item Number	6004219
Part Number	-
Detail Description	Socle, with M6 hexagon socket head screw, M6 serrated washer, SS304

General Specifications

Material	Stainless steel 304
Color	Natural
Mounting Hole	21 mm slot
Attachment Mounting Hole	M6X1-6H tapped hole

Dimensions

Screw Size	M6 X 15 mm
Serrated Washer Size	M6
Socle Height	23.2mm 0.91 in
Socle Width	37.5 mm 1.48 in
Socle Length	50.0 mm 1.97 in

Environmental Specifications

Corrosion Resistance	≥96 hours in salt spray chamber, base on IEC 60068-2-11
----------------------	---

Packaging and Weights

Height, Packed	200 mm 7.87 in
Width, Packed	200 mm 7.87 in
Included	One socle Two hexagon socket head screw Two serrated washer
UOM	1 Pcs
Packaging	Bag
Weight, Gross	0.053 kg 0.116 lbs

Certifications and Compliance

For more information, please visit:
www.maxdao.com



©Maxdao Inc. All rights reserved.

The information contained herein is subject to change without notice. We reserve the right to make technical changes or modify the contents of this document without prior notice.

Revised: Aug 21, 2024
 Public

Page 1 of 2

ISO 9001:2015	Designed, manufactured and/or distributed under this quality management system
RoHS	Compliant

For more information, please visit:
www.maxdao.com



©Maxdao Inc. All rights reserved.

The information contained herein is subject to change without notice. We reserve the right to make technical changes or modify the contents of this document without prior notice.

Revised: Aug 21, 2024

Public