

Manufacturer of Grounding lug

Copper lug made of tin-plated copper

These lugs are used for severe-duty applications and have thicker walls for greater strength and conductivity

UL Listed and CSA certified

Customized labels, color printing, size and so on



About Maxdao

Maxdao Vision

Our mission is to offer a reliable, simple and compatible products or solutions to build a better-connected world

Leading Product

Founded on 2005, Maxdao has been focus on wireless components' developing and manufacturing. Based years market knowledge and insight, we have the ability to offer innovative product to lead the market. Our products are also designed based the strict standard of the industry.



Professional People Focus on Customers

Our core team is with 10+ years' expertise to offer our customer a great experience from market-leading solutions to order fulfillment.



Responsible Company

At Maxdao, we have always believed in the importance of building a responsible company that compliant to the international standard in quality, environment & safety. We are certified by the following standards;

- ISO9001:2015
- ISO14001:2015
- OHSAS18001:2007
- RoHS2.0

Maxdao is also a manufacturer member of NATE, non-profit trade association providing a unified voice for tower erection, maintenance and service companies.



A Manufacturer Member

CERTIFICATE OF COMPLIANCE

Certificate Number 20190121-E486663
Report Reference E486663-20190115
Issue Date 2019-JANUARY-21

Issued to: Maxdao Limited
NO 53 Hailing Industrial Zone
Taizhou, Jiangsu 225300 CHINA

This certificate confirms that representative samples of Wire Connectors And Soldering Lugs
See Addendum Page


Have been investigated by UL in accordance with the Standard(s) indicated on this Certificate.

Standard(s) for Safety: UL486C & CSA C22.2 No. 188, Splicing Wire Connectors.
Additional Information: See the UL Online Certifications Directory at <https://iq.ulprospector.com> for additional information.

This *Certificate of Compliance* does not provide authorization to apply the UL Mark. Only the UL Follow-Up Services Procedure provides authorization to apply the UL Mark.

Only those products bearing the UL Mark should be considered as being UL Certified and covered under UL's Follow-Up Services.

Look for the UL Certification Mark on the product.



Bruce Mahrenholz, Director North American Certification Program
UL LLC

Any information and documentation involving UL Mark services are provided on behalf of UL LLC (UL) or any authorized licensee of UL. For questions, please contact a local UL Customer Service Representative at <http://ul.com/about/locations/>



Practical application of color grounding lug

Cable lugs are connecting devices used primarily for terminating and joining cable and wire conductors in electrical installations and equipment. In general, lugs and ferrules are fixed to the cables and wires by inserting the conductor/s into the "barrel" (tube) of the device and then "crimping" (squeezing) the "barrel" onto the conductor/s to form a secure mechanical and electrical joint.



Applications

- The termination of cables and wires in electrical reticulation systems and equipment.
- The joining of cables and wires in electrical reticulation systems and equipment.

Features and benefits

- Manufactured from high conductivity copper which is tin plated to prevent corrosion.
- Suitable for various copper cable and wire types, as long as the correct size is selected and the relevant "crimping" method is used
- Easy to use in conjunction with mechanical or hydraulic crimping equipment.

Table of contents

P1 standard barrel



P4 long barrel



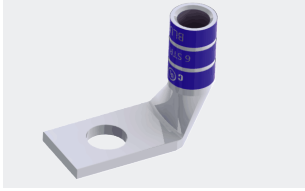
P7 standard barrel



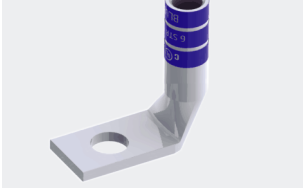
P9 long barrel



P11 standard barrel



P13 long barrel



P15 standard barrel



P18 standard barrel narrow tongue



P19 long barrel



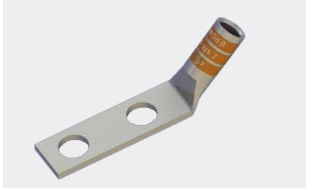
P19 long barrel narrow tongue



P24 standard barrel



P24 standard barrel narrow tongue



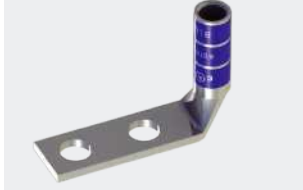
P27 long barrel



P32 standard barrel



P34 standard barrel narrow tongue



P35 long barrel



P40 standard barrel



P40 long barrel



P41 butt splice

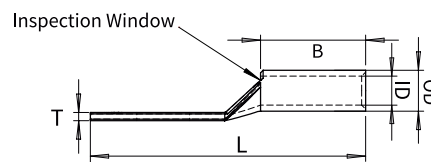
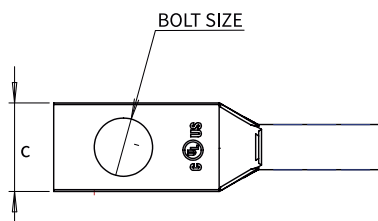


One Hole Code Conductor Standard Barrel

One Hole
P1-5

- One hole grounding lug
- Standard barrel
- Color-Coded for Easy Identification
- Used for Power and Grounding Applications

One Hole
45°
P6-8



One Hole
90°
P9-11

RoHS  US

Two Hole
P12-18

Two Hole
45°
P19-24

Two Hole
90°
P25-30

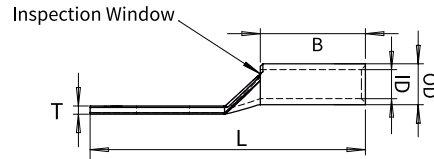
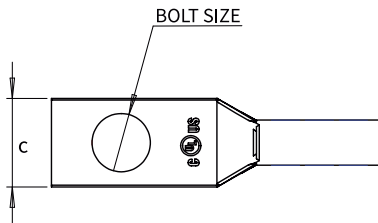
Four Hole
P31

Butt Splice
P32

Part No#	DIE COLOR	WIRE SIZE		BOLT SIZE	Tang Width	Barrel length	Tang Thickness	Over all length	Inner diameter	Outer diameter
		STR	mm ²		C	B	T	L	ID	OD
MD1410-10W	YELLOW	14-10#	4-6	#8-#10	0.38	0.38	0.06	0.65	0.13	0.22
MD1410-14W				1/4	0.45	0.39	0.05	1.13	0.13	0.22
MD1410-56W				5/16	0.45	0.41	0.05	1.10	0.13	0.22
MD1410-38W				3/8	0.55	0.45	0.04	1.17	0.13	0.22
MDS8-10W	RED	8 AWG	10	#8-#10	0.41	0.44	0.08	1.16	0.18	0.27
MDS8-14W				1/4	0.44	0.44	0.08	1.26	0.18	0.27
MDS8-56W				5/16	0.52	0.44	0.06	1.38	0.18	0.27
MDS8-38W				3/8	0.58	0.44	0.06	1.51	0.18	0.27
MDS8-12W				1/2	0.71	0.44	0.05	1.76	0.18	0.27
MDS6-10W	BLUE	6 AWG	16	#8-#10	0.41	0.54	0.09	1.27	0.20	0.29
MDS6-14W				1/4	0.45	0.54	0.08	1.45	0.20	0.29
MDS6-56W				5/16	0.52	0.54	0.07	1.52	0.20	0.29
MDS6-38W				3/8	0.63	0.54	0.06	1.62	0.20	0.29
MDS6-12W				1/2	0.75	0.54	0.12	1.87	0.20	0.29
MD6-10W				#10	0.45	0.81	0.09	1.52	0.20	0.29
MD6-14W				1/4	0.48	0.81	0.08	1.61	0.20	0.29
MD6-56W				5/16	0.56	0.81	0.07	1.73	0.20	0.29
MD6-38W				3/8	0.63	0.81	0.06	1.83	0.20	0.29
MD6-12W				1/2	0.75	0.81	0.07	2.23	0.20	0.29
MDS4-10W	GRAY	4 AWG	25	#10	0.52	0.53	0.09	1.26	0.26	0.35
MDS4-14W				1/4	0.52	0.53	0.09	1.35	0.26	0.35
MDS4-56W				5/16	0.52	0.53	0.09	1.47	0.26	0.35
MDS4-38W				3/8	0.58	0.53	0.07	1.57	0.26	0.35
MD4-10W				#8-#10	0.50	0.81	0.09	1.58	0.26	0.35
MD4-14W				1/4	0.50	0.81	0.09	1.74	0.26	0.35
MD4-56W				5/16	0.50	0.81	0.08	1.79	0.26	0.35
MD4-38W				3/8	0.58	0.81	0.09	1.92	0.26	0.35
MD4-12W	1/2	0.71	0.81	0.06	2.20	0.26	0.35			
MDS2-14W	BROWN	2 AWG	38	1/4	0.61	0.57	0.11	1.46	0.31	0.42
MDS2-56W				5/16	0.61	0.57	0.11	1.58	0.31	0.42
MDS2-38W				3/8	0.61	0.57	0.11	1.66	0.31	0.42

One Hole Code Conductor Standard Barrel

- One hole grounding lug
- Standard barrel
- Color-Coded for Easy Identification
- Used for Power and Grounding Applications



RoHS  US

Part No#	DIE COLOR	WIRE SIZE		BOLT SIZE	Tang Width	Barrel length	Tang Thickness	Over all length	Inner diameter	Outer diameter
		STR	mm ²		C	B	T	L	ID	OD
MDS2-12W	BROWN	2 AWG	38	1/2	0.73	0.57	0.09	1.89	0.31	0.42
MD2-14W				1/4	0.61	0.88	0.11	1.88	0.31	0.42
MD2-56W				5/16	0.61	0.88	0.11	1.93	0.31	0.42
MD2-38W				3/8	0.61	0.88	0.11	2.06	0.31	0.42
MD2-12W				1/2	0.73	0.88	0.09	2.32	0.31	0.42
MD1-14W	GREEN	1 AWG	50	1/4	0.68	0.88	0.10	1.81	0.36	0.46
MD1-56W				5/6	0.68	0.88	0.10	1.94	0.36	0.46
MD1-38W				3/8	0.68	0.88	0.10	2.06	0.36	0.46
MD1-12W				1/2	0.73	0.88	0.09	2.37	0.36	0.46
MD1/0-14W	PINK	1/0 AWG	60	1/4	0.75	0.88	0.12	1.84	0.39	0.52
MD1/0-56W				5/6	0.75	0.88	0.12	1.96	0.39	0.52
MD1/0-38W				3/8	0.75	0.88	0.12	2.09	0.39	0.52
MD1/0-12W				1/2	0.75	0.88	0.12	2.34	0.39	0.52
MD2/0-14W	BLACK	2/0 AWG	70	1/4	0.83	0.94	0.12	1.94	0.45	0.56
MD2/0-38W				5/6	0.83	0.94	0.12	2.19	0.45	0.56
MD2/0-12W				3/8	0.83	0.94	0.12	2.44	0.45	0.56
MD2/0-34W				1/2	1.02	0.94	0.10	2.96	0.45	0.56
MD3/0-56W	ORANGE	3/0 AWG	95	5/6	0.91	1.00	0.13	1.90	0.51	0.63
MD3/0-38W				3/8	0.91	1.00	0.13	1.96	0.51	0.63
MD3/0-12W				1/2	0.91	1.00	0.13	2.21	0.51	0.63
MD4/0-14W	PURPLE	4/0 AWG	120	1/4	1.02	0.88	0.14	1.96	0.55	0.69
MD4/0-56W				5/6	1.02	0.88	0.14	2.08	0.55	0.69
MD4/0-38W				3/8	1.02	0.88	0.14	2.21	0.55	0.69
MD4/0-12W				1/2	1.02	0.88	0.14	2.46	0.55	0.69
MD4/0-34W				3/4	1.05	0.88	0.13	2.90	0.55	0.69
MD250-14W	YELLOW	250KCM	135	1/4	1.11	1.06	0.15	2.23	0.63	0.77
MD250-56W				5/6	1.11	1.06	0.15	2.29	0.63	0.77
MD250-38W				3/8	1.11	1.06	0.15	2.42	0.63	0.77
MD250-12W				1/2	1.11	1.06	0.15	2.67	0.63	0.77
MD250-78W				3/4	1.11	1.06	0.15	3.36	0.63	0.77

One Hole
P1-5

One Hole
45°
P6-8

One Hole
90°
P9-11

Two Hole
P12-18

Two Hole
45°
P19-24

Two Hole
90°
P25-30

Four Hole
P31

Butt Splice
P32

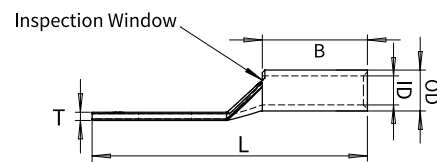
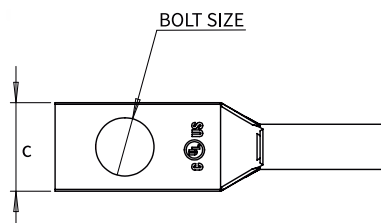
One Hole Code Conductor Standard Barrel Narrow Tongue

One Hole
P1-5

- One hole grounding lug
- Standard barrel narrow tongue
- Color-Coded for Easy Identification
- Used for Power and Grounding Applications

One Hole
45°
P6-8

One Hole
90°
P9-11



RoHS

Two Hole
P12-18

Two Hole
45°
P19-24

Two Hole
90°
P25-30

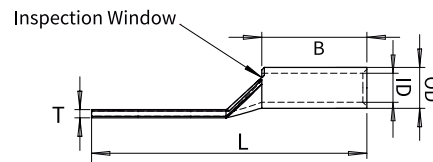
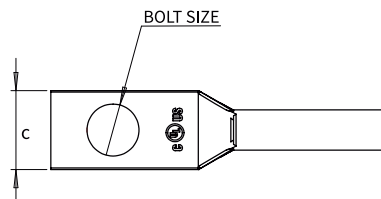
Four Hole
P31

Butt Splice
P32

Part No#	DIE COLOR	WIRE SIZE		BOLT SIZE	Tang Width	Barrel length	Tang Thickness	Over all length	Inner diameter	Outer diameter
		STR	mm ²		C	B	T	L	ID	OD
MD8-06WNT	RED	8 AWG	10	#6	0.29	0.44	0.09	1.08	0.18	0.27
MD8-08WNT				#8	0.33	0.44	0.09	1.18	0.18	0.27
MD6-06WNT	BLUE	6 AWG	16	#6	0.29	0.54	0.09	1.17	0.20	0.29
MD4-10WNT	GRAY	4 AWG	25	#10	0.40	0.81	0.09	1.73	0.26	0.35
MD2-10WNT	BROWN	2 AWG	38	#10	0.48	0.88	0.11	1.8	0.31	0.42
MD2-14WNT				1/4	0.50	0.88	0.11	1.8	0.31	0.42
MD2-56WNT				5/16	0.49	0.88	0.11	1.82	0.31	0.42
MD1-10WNT	GREEN	1 AWG	50	#10	0.50	0.88	0.10	2.23	0.36	0.46
MD1-14WNT				1/4	0.50	0.88	0.10	2.23	0.36	0.46
MD1/0-10WNT	PINK	1/0 AWG	60	#10	0.62	0.88	0.12	2.28	0.39	0.52
MD1/0-14WNT				1/4	0.48	0.88	0.12	1.93	0.39	0.52
MD1/0-56WNT				5/6	0.62	0.88	0.12	2.28	0.39	0.52
MD1/0-38WNT				3/8	0.62	0.88	0.12	2.18	0.39	0.52
MD2/0-10WNT	BLACK	2/0 AWG	70	#10	0.62	0.94	0.13	2.62	0.45	0.56
MD2/0-14WNT				1/4	0.48	0.94	0.12	2.02	0.45	0.56
MD2/0-56WNT				5/6	0.62	0.94	0.13	2.62	0.45	0.56
MD2/0-38WNT				3/8	0.72	0.94	0.12	2.48	0.45	0.56
MD3/0-14WNT	ORANGE	3/0 AWG	95	1/4	0.64	1.00	0.13	2.16	0.51	0.63
MD3/0-56WNT				5/6	0.64	1.00	0.12	2.17	0.51	0.63
MD3/0-38WNT				3/8	0.64	1.00	0.13	2.73	0.51	0.63
MD4/0-14WNT	PURPLE	4/0 AWG	120	1/4	0.76	0.88	0.14	2.60	0.55	0.69
MD4/0-56WNT				5/6	0.70	0.88	0.14	2.09	0.55	0.69
MD4/0-38WNT				3/8	0.76	0.88	0.14	2.67	0.55	0.69
MD250-56WNT	YELLOW	250KCM	135	1/4	0.76	1.06	0.15	2.49	0.63	0.77
MD250-38WNT				5/6	0.94	1.06	0.15	2.96	0.63	0.77
MD250-12WNT				3/8	0.94	1.06	0.15	3.18	0.63	0.77

One Hole Code Conductor Long Barrel

- One hole grounding lug
- Long barrel
- Color-Coded for Easy Identification
- Used for Power and Grounding Applications



RoHS 

One Hole
P1-5

One Hole
45°
P6-8

One Hole
90°
P9-11

Two Hole
P12-18

Two Hole
45°
P19-24

Two Hole
90°
P25-30

Four Hole
P31

Butt Splice
P32

Part No#	No inspection window	DIE COLOR	WIRE SIZE		BOLT SIZE	Tang Width	Barrel length	Tang Thickness	Over all length	Inner diameter	Outer diameter
			STR	mm ²		C	B	T	L	ID	OD
MDL1410-14W	—	YELLOW	14-10#	4-6	1/4	0.41	0.69	0.05	1.52	0.13	0.22
MDL8-10W	MDL8-10	RED	8 AWG	10	#10	0.41	0.75	0.08	1.43	0.18	0.27
MDL8-14W	MDL8-14				1/4	0.44	0.75	0.08	1.56	0.18	0.27
MDL8-38W	MDL8-38				3/8	0.58	0.75	0.06	1.75	0.18	0.27
MDL6-08W	MDL6-08	BLUE	6 AWG	16	#8	0.42	1.12	0.09	1.83	0.20	0.29
MDL6-10W	MDL6-10				#10	0.42	1.12	0.09	1.89	0.20	0.29
MDL6-56W	MDL6-56				5/6	0.45	1.12	0.08	1.80	0.20	0.29
MDL6-14W	MDL6-14				1/4	0.45	1.12	0.08	2.02	0.20	0.29
MDL6-38W	MDL6-38				3/8	0.58	1.12	0.06	2.21	0.20	0.29
MDL6-12W	MDL6-12				1/2	0.75	1.12	0.12	2.46	0.20	0.29
MDL4-14W	MDL4-14	GRAY	4 AWG	25	1/4	0.50	1.12	0.09	2.04	0.26	0.35
MDL4-38W	MDL4-38				3/8	0.58	1.12	0.08	2.22	0.26	0.35
MDL4-12W	MDL4-12				1/2	0.73	1.12	0.06	2.50	0.26	0.35
MDL4-56W	MDL4-56				5/6	0.55	1.12	0.09	2.10	0.26	0.35
—	MDL4-10				#10	0.50	1.12	0.09	1.94	0.26	0.35
MDL2-14W	MDL2-14	BROWN	2 AWG	38	1/4	0.60	1.25	0.11	2.21	0.31	0.42
MDL2-38W	MDL2-38				3/8	0.60	1.25	0.11	2.40	0.31	0.42
MDL2-12W	MDL2-12				1/2	0.73	1.25	0.09	2.65	0.31	0.42
—	MDL2-10				#10	0.60	1.25	0.11	2.10	0.31	0.42
—	MDL2-56				5/6	0.60	1.25	0.11	2.29	0.31	0.42

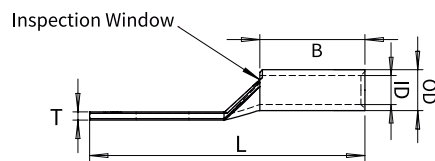
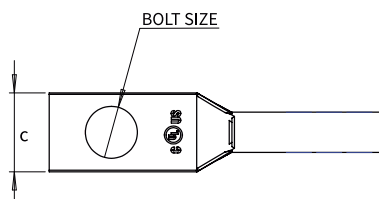
One Hole Code Conductor Long Barrel

One Hole
P1-5

- One hole grounding lug
- Long barrel
- Color-Coded for Easy Identification
- Used for Power and Grounding Applications

One Hole
45°
P6-8

One Hole
90°
P9-11



RoHS 

Two Hole
P12-18

Two Hole
45°
P19-24

Two Hole
90°
P25-30

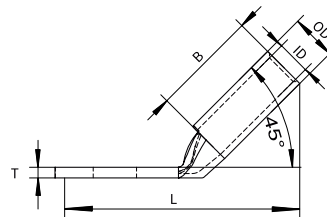
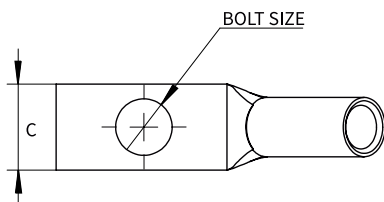
Four Hole
P31

Part No#		DIE COLOR	WIRE SIZE		BOLT SIZE	Tang Width	Barrel length	Tang Thickness	Over all length	Inner diameter	Outer diameter
	No inspection window		STR	mm ²		C	B	T	L	ID	OD
MDL1-14W	MDL1-14	GREEN	1 AWG	50	1/4	0.68	1.38	0.10	2.37	0.36	0.46
MDL1-38W	MDL1-38				3/8	0.68	1.38	0.10	2.56	0.36	0.46
MDL1-12W	MDL1-12				1/2	0.73	1.38	0.09	2.81	0.36	0.46
—	MDL1-10				#10	0.68	1.38	0.10	2.27	0.36	0.46
—	MDL1-56	PINK	1/0 AWG	60	5/6	0.68	1.38	0.10	2.45	0.36	0.46
—	MDL1/0-10				#10	0.75	1.38	0.12	2.30	0.39	0.52
MDL1/0-14W	—				1/4	0.75	1.38	0.12	2.40	0.39	0.52
MDL1/0-56W	MDL1/0-56				5/6	0.75	1.38	0.12	2.46	0.39	0.52
MDL1/0-38W	MDL1/0-38	BLACK	2/0 AWG	70	3/8	0.75	1.38	0.12	2.59	0.39	0.52
MDL1/0-12W	MDL1/0-12				1/2	0.75	1.38	0.12	2.84	0.39	0.52
MDL2/0-14W	MDL2/0-14				1/4	0.83	1.50	0.12	2.56	0.45	0.56
—	MDL2/0-56				5/6	0.83	1.50	0.12	2.65	0.45	0.56
MDL2/0-38W	MDL2/0-38	ORANGE	3/0 AWG	95	3/8	0.83	1.50	0.12	2.75	0.45	0.56
MDL2/0-12W	MDL2/0-12				1/2	0.83	1.50	0.12	3.00	0.45	0.56
MDL3/0-38W	MDL3/0-38	PURPLE	4/0 AWG	120	3/8	0.91	1.50	0.13	2.87	0.51	0.63
MDL3/0-12W	MDL3/0-12				1/2	0.91	1.50	0.13	3.12	0.51	0.63
MDL4/0-38W	MDL4/0-38	YELLOW	250KCM	135	3/8	1.02	1.62	0.14	2.95	0.55	0.69
MDL4/0-12W	MDL4/0-12				1/2	1.02	1.62	0.14	3.20	0.55	0.69
MDL250-38W	—				3/8	1.11	1.62	0.16	2.98	0.63	0.77
MDL250-12W	MDL250-12	YELLOW	250KCM	135	1/2	1.11	1.62	0.16	3.23	0.63	0.77
—	MDL250-78				7/8	1.25	1.62	0.15	3.85	0.63	0.77

Butt Splice
P32

One Hole Code Conductor Standard Barrel, 45° Angle

- One hole 45° grounding lug
- Standard barrel
- Color-Coded for Easy Identification
- Used for Power and Grounding Applications



RoHS  US

One Hole
P1-5

One Hole
45°
P6-8

One Hole
90°
P9-11

Two Hole
P12-18

Two Hole
45°
P19-24

Two Hole
90°
P25-30

Four Hole
P31

Butt Splice
P32

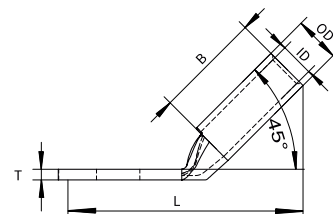
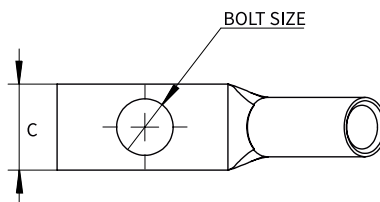
Part No#	DIE COLOR	WIRE SIZE		BOLT SIZE	Tang Width	Barrel length	Tang Thickness	Over all length	Inner diameter	Outer diameter
		STR	mm ²		C	B	T	L	ID	OD
MD8-10HW	RED	8 AWG	10	#8-#10	0.41	0.44	0.08	1.00	0.18	0.27
MD8-14HW				1/4	0.44	0.44	0.08	1.09	0.18	0.27
MD8-56HW				5/16	0.52	0.44	0.06	1.20	0.18	0.27
MD8-38HW				3/8	0.58	0.44	0.06	1.30	0.18	0.27
MDS6-10HW	BLUE	6 AWG	16	#8-#10	0.41	0.50	0.09	1.06	0.20	0.29
MDS6-14HW				1/4	0.45	0.50	0.08	1.14	0.20	0.29
MDS6-56HW				5/16	0.52	0.50	0.07	1.26	0.20	0.29
MDS6-38HW				3/8	0.63	0.50	0.06	1.35	0.20	0.29
MD6-10HW				#10	0.45	0.81	0.09	1.29	0.20	0.29
MD6-14HW				1/4	0.48	0.81	0.08	1.38	0.20	0.29
MD6-56HW				5/16	0.56	0.81	0.07	1.49	0.20	0.29
MD6-38HW				3/8	0.63	0.81	0.06	1.59	0.20	0.29
MDS4-10HW	GRAY	4 AWG	25	#10	0.52	0.53	0.09	1.12	0.26	0.35
MDS4-14HW				1/4	0.52	0.53	0.09	1.21	0.26	0.35
MDS4-56HW				5/16	0.52	0.53	0.09	1.33	0.26	0.35
MDS4-38HW				3/8	0.58	0.53	0.07	1.42	0.26	0.35
MD4-10HW				#8-#10	0.50	0.81	0.09	1.31	0.26	0.35
MD4-14HW				1/4	0.50	0.81	0.09	1.40	0.26	0.35
MD4-56HW				5/16	0.50	0.81	0.08	1.52	0.26	0.35
MD4-38HW				3/8	0.58	0.81	0.09	1.61	0.26	0.35
MDS2-14HW	BROWN	2 AWG	38	1/4	0.61	0.57	0.11	1.27	0.31	0.42
MDS2-56HW				5/16	0.61	0.57	0.11	1.39	0.31	0.42

One Hole Code Conductor Standard Barrel, 45° Angle

One Hole
P1-5

- One hole 45° grounding lug
- Standard barrel
- Color-Coded for Easy Identification
- Used for Power and Grounding Applications

One Hole
45°
P6-8



One Hole
90°
P9-11

RoHS  US

Two Hole
P12-18

Two Hole
45°
P19-24

Two Hole
90°
P25-30

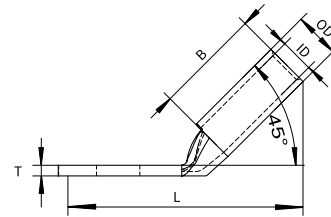
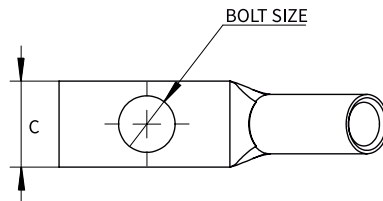
Four Hole
P31

Butt Splice
P32

Part No#	DIE COLOR	WIRE SIZE		BOLT SIZE	Tang Width	Barrel length	Tang Thickness	Over all length	Inner diameter	Outer diameter
		STR	mm ²		C	B	T	L	ID	OD
MDS2-38HW	BROWN	2 AWG	38	3/8	0.61	0.57	0.11	1.46	0.31	0.42
MDS2-12HW				1/2	0.73	0.57	0.09	1.68	0.31	0.42
MD2-14HW				1/4	0.61	0.88	0.11	1.49	0.31	0.42
MD2-56HW				5/16	0.61	0.88	0.11	1.61	0.31	0.42
MD2-38HW				3/8	0.61	0.88	0.11	1.68	0.31	0.42
MD2-12HW				1/2	0.73	0.88	0.09	1.90	0.31	0.42
MD1-14HW	GREEN	1 AWG	50	1/4	0.68	0.88	0.10	1.50	0.36	0.46
MD1-56HW				5/16	0.68	0.88	0.10	1.62	0.36	0.46
MD1-38HW				3/8	0.68	0.88	0.10	1.70	0.36	0.46
MD1-12HW				1/2	0.73	0.88	0.09	1.93	0.36	0.46
MD1/0-14HW	PINK	1/0 AWG	60	1/4	0.75	0.88	0.12	1.63	0.39	0.52
MD1/0-56HW				5/16	0.75	0.88	0.12	1.69	0.39	0.52
MD1/0-38HW				3/8	0.75	0.88	0.12	1.76	0.39	0.52
MD1/0-12HW				1/2	0.75	0.88	0.12	1.99	0.39	0.52
MD2/0-14HW	BLACK	2/0 AWG	70	1/4	0.83	0.94	0.12	1.77	0.45	0.56
MD2/0-38HW				5/16	0.83	0.94	0.12	1.83	0.45	0.56
MD2/0-12HW				3/8	0.83	0.94	0.12	2.08	0.45	0.56
MD2/0-34HW				1/2	1.02	0.94	0.10	2.66	0.45	0.56
MD3/0-56HW	ORANGE	3/0 AWG	95	5/16	0.91	1.00	0.13	1.90	0.51	0.63
MD3/0-38HW				3/8	0.91	1.00	0.13	1.96	0.51	0.63
MD3/0-12HW				1/2	0.91	1.00	0.13	2.21	0.51	0.63
MD4/0-14HW	PURPLE	4/0 AWG	120	1/4	1.02	1.19	0.14	1.96	0.55	0.69
MD4/0-56HW				5/16	1.02	1.19	0.14	1.98	0.55	0.69
MD4/0-38HW				3/8	1.02	1.19	0.14	2.05	0.55	0.69
MD4/0-12HW				1/2	1.02	1.19	0.14	2.28	0.55	0.69
MD250-14HW	YELLOW	250KCM	135	1/4	1.11	1.06	0.15	1.89	0.63	0.77
MD250-56HW				5/16	1.11	1.06	0.15	1.90	0.63	0.77
MD250-38HW				3/8	1.11	1.06	0.15	1.97	0.63	0.77
MD250-12HW				1/2	1.11	1.06	0.15	2.20	0.63	0.77

One Hole Code Conductor Long Barrel, 45° Angle

- One hole 45° grounding lug
- Standard barrel
- Color-Coded for Easy Identification
- Used for Power and Grounding Applications



RoHS 

One Hole
P1-5

One Hole
45°
P6-8

One Hole
90°
P9-11

Two Hole
P12-18

Two Hole
45°
P19-24

Two Hole
90°
P25-30

Four Hole
P31

Butt Splice
P32

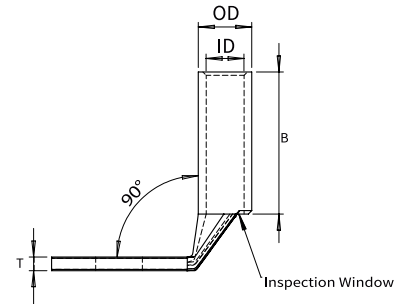
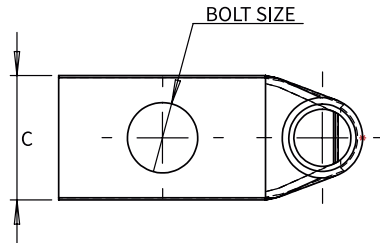
Part No#		DIE COLOR	WIRE SIZE		BOLT SIZE	Tang Width	Barrel length	Tang Thickness	Over all length	Inner diameter	Outer diameter
	No inspection window		STR	mm ²		C	B	T	L	ID	OD
MDL1410-14HW	—	YELLOW	14-10#	4-6	1/4	0.41	0.69	0.05	1.18	0.13	0.22
MDL8-10HW	MDL8-10H	RED	8 AWG	10	#10	0.41	0.81	0.08	1.32	0.18	0.27
MDL8-14HW	MDL8-14H				1/4	0.44	0.81	0.08	1.40	0.18	0.27
MDL6-08HW	MDL6-08H	BLUE	6 AWG	16	#8	0.42	1.12	0.09	1.53	0.20	0.29
MDL6-10HW	MDL6-10H				#10	0.42	1.12	0.09	1.54	0.20	0.29
MDL6-14HW	MDL6-14H				1/4	0.41	1.12	0.09	1.62	0.20	0.29
MDL6-56HW	MDL6-56H				5/16	0.52	1.12	0.07	1.65	0.20	0.29
MDL6-38HW	MDL6-38H	GRAY	4 AWG	25	3/8	0.58	1.12	0.06	1.83	0.20	0.29
MDL4-10HW	MDL4-10H				#10	0.50	1.12	0.09	1.58	0.26	0.35
MDL4-14HW	MDL4-14H				1/4	0.50	1.12	0.09	1.67	0.26	0.35
MDL4-56HW	MDL4-56H	BROWN	2 AWG	38	5/16	0.52	1.12	0.12	1.70	0.26	0.35
MDL2-10HW	MDL2-10H				#10	0.60	1.25	0.11	1.76	0.31	0.42
MDL2-14HW	MDL2-14H	GREEN	1 AWG	50	1/4	0.60	1.25	0.11	1.93	0.31	0.42
MDL2-56HW	MDL2-56H				5/6	0.60	1.25	0.11	1.95	0.31	0.42
MDL1-10HW	MDL1-10H	PINK	1/0 AWG	60	#10	0.68	1.38	0.10	1.83	0.36	0.46
MDL1-14HW	MDL1-14H				1/4	0.68	1.38	0.10	2.03	0.36	0.46
MDL1-56HW	MDL1-56H				5/6	0.68	1.38	0.10	2.03	0.36	0.46
MDL1/0-10HW	MDL1/0-10H	BLACK	2/0 AWG	70	#10	0.75	1.38	0.12	1.92	0.39	0.52
MDL1/0-56HW	MDL1/0-56H				5/6	0.75	1.38	0.13	2.12	0.39	0.52
MDL1/0-38HW	MDL1/0-38H				3/8	0.75	1.38	0.12	2.19	0.39	0.52
MDL1/0-12HW	MDL1/0-12H	ORANGE	3/0 AWG	95	1/2	0.83	1.38	0.11	2.42	0.39	0.52
MDL2/0-38HW	MDL2/0-38H				3/8	0.83	1.50	0.12	2.31	0.45	0.56
MDL2/0-12HW	MDL2/0-12H	PURPLE	4/0 AWG	120	1/2	0.83	1.50	0.12	2.53	0.45	0.56
MDL3/0-38HW	MDL3/0-38H				3/8	0.91	1.50	0.13	2.33	0.51	0.63
MDL3/0-12HW	MDL3/0-12H	YELLOW	250KCM	135	1/2	0.91	1.50	0.13	2.58	0.51	0.63
MDL4/0-38HW	MDL4/0-38H				3/8	1.02	1.62	0.14	2.48	0.55	0.69
MDL4/0-12HW	MDL4/0-12H	YELLOW	250KCM	135	1/2	1.02	1.62	0.14	2.67	0.55	0.69
MDL250-12HW	MDL250-12H				7/8	1.11	1.62	0.14	2.74	0.63	0.77
MDL250-78HW	MDL250-78H				7/8	1.25	1.62	0.12	3.27	0.63	0.77

One Hole Code Conductor Standard Barrel, 90° Angle

One Hole
P1-5

- One hole 90° grounding lug
- Standard barrel
- Color-Coded for Easy Identification
- Used for Power and Grounding Applications

One Hole
45°
P6-8



One Hole
90°
P9-11

RoHS

Two Hole
P12-18

Two Hole
45°
P19-24

Two Hole
90°
P25-30

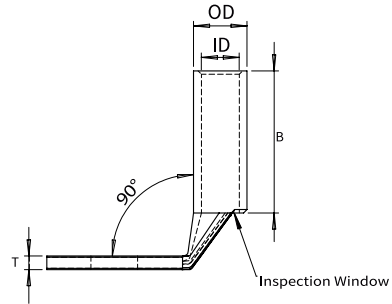
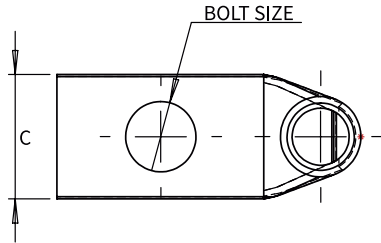
Four Hole
P31

Butt Splice
P32

Part No#	DIE COLOR	WIRE SIZE		BOLT SIZE	Tang	Barrel	Tang	Over all length	Inner diameter	Outer diameter
		STR	mm ²		Width	length	Thickness			
					C	B	T	L	ID	OD
MDS1410-14FW	YELLOW	14-10#	4-6	1/4	0.42	0.38	0.05	0.94	0.13	0.22
MDS8-10FW	RED	8 AWG	10	#8-#10	0.41	0.44	0.08	0.90	0.18	0.27
MDS8-14FW				1/4	0.44	0.44	0.08	0.99	0.18	0.27
MDS8-56FW				5/16	0.52	0.44	0.06	1.11	0.18	0.27
MDS8-38FW	BLUE	6 AWG	16	3/8	0.58	0.44	0.06	1.21	0.18	0.27
MDS6-10FW				#8-#10	0.41	0.50	0.09	0.94	0.20	0.29
MDS6-14FW				1/4	0.45	0.50	0.08	1.03	0.20	0.29
MDS6-56FW				5/16	0.52	0.50	0.07	1.15	0.20	0.29
MDS6-38FW	GRAY	4 AWG	25	3/8	0.63	0.50	0.06	1.25	0.20	0.29
MD6-10FW				#10	0.45	0.81	0.09	0.94	0.20	0.29
MD6-14FW				1/4	0.48	0.81	0.08	1.03	0.20	0.29
MD6-56FW	BROWN	2 AWG	38	5/16	0.56	0.81	0.07	1.15	0.20	0.29
MD6-38FW				3/8	0.63	0.81	0.06	1.25	0.20	0.29
MDS4-10FW				#10	0.52	0.53	0.09	1.03	0.26	0.35
MDS4-14FW				1/4	0.52	0.53	0.09	1.12	0.26	0.35
MDS4-56FW				5/16	0.52	0.53	0.09	1.24	0.26	0.35
MDS4-38FW	BROWN	2 AWG	38	3/8	0.58	0.53	0.07	1.34	0.26	0.35
MD4-10FW				#8-#10	0.50	0.81	0.09	1.03	0.26	0.35
MD4-14FW				1/4	0.50	0.81	0.09	1.12	0.26	0.35
MD4-56FW				5/16	0.50	0.81	0.08	1.24	0.26	0.35
MD4-38FW	BROWN	2 AWG	38	3/8	0.58	0.81	0.09	1.34	0.26	0.35
MDS4-14FW				1/4	0.61	0.57	0.11	1.24	0.31	0.42
MDS4-56FW				5/16	0.61	0.57	0.11	1.36	0.31	0.42
MDS4-38FW				3/8	0.61	0.57	0.11	1.44	0.31	0.42
MDS4-12FW				1/2	0.73	0.57	0.09	1.67	0.31	0.42
MD4-14FW	1/4	0.61	0.88	0.11	1.24	0.31	0.42			

One Hole Code Conductor Standard Barrel, 90° Angle

- One hole 90° grounding lug
- Standard barrel
- Color-Coded for Easy Identification
- Used for Power and Grounding Applications



RoHS 

One Hole
P1-5

One Hole
45°
P6-8

One Hole
90°
P9-11

Two Hole
P12-18

Two Hole
45°
P19-24

Two Hole
90°
P25-30

Four Hole
P31

Butt Splice
P32

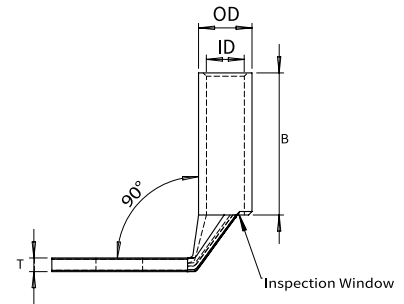
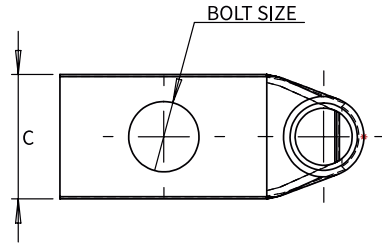
Part No#	DIE COLOR	WIRE SIZE		BOLT SIZE	Tang Width	Barrel length	Tang Thickness	Over all length	Inner diameter	Outer diameter
		STR	mm ²		C	B	T	L	ID	OD
MD4-56FW	BROWN	2 AWG	38	5/16	0.61	0.88	0.11	1.36	0.31	0.42
MD4-38FW				3/8	0.61	0.88	0.11	1.44	0.31	0.42
MD4-12FW				1/2	0.73	0.88	0.09	1.67	0.31	0.42
MD1-14FW	GREEN	1 AWG	50	1/4	0.68	0.88	0.10	1.31	0.36	0.46
MD1-56FW				5/16	0.68	0.88	0.10	1.44	0.36	0.46
MD1-38FW				3/8	0.68	0.88	0.10	1.51	0.36	0.46
MD1-12FW	PINK	1/0 AWG	60	1/2	0.73	0.88	0.09	1.75	0.36	0.46
MD1/0-14FW				1/4	0.75	0.88	0.12	1.45	0.39	0.52
MD1/0-56FW				5/16	0.75	0.88	0.12	1.51	0.39	0.52
MD1/0-38FW	BLACK	2/0 AWG	70	3/8	0.75	0.88	0.12	1.58	0.39	0.52
MD1/0-12FW				1/2	0.75	0.88	0.12	1.82	0.39	0.52
MD2/0-14FW				1/4	0.83	0.94	0.12	1.59	0.45	0.56
MD2/0-38FW	ORANGE	3/0 AWG	95	3/8	0.83	0.94	0.12	1.59	0.45	0.56
MD2/0-12FW				1/2	0.83	0.94	0.12	1.66	0.45	0.56
MD2/0-34FW				3/4	1.02	0.94	0.10	1.91	0.45	0.56
MD3/0-56FW	PURPLE	4/0 AWG	120	5/16	0.91	1.00	0.13	1.67	0.51	0.63
MD3/0-38FW				3/8	0.91	1.00	0.13	1.73	0.51	0.63
MD3/0-12FW				1/2	0.91	1.00	0.13	1.98	0.51	0.63
MD4/0-14FW	YELLOW	250KCM	135	1/4	1.02	1.19	0.14	1.75	0.55	0.69
MD4/0-56FW				5/16	1.02	1.19	0.14	1.77	0.55	0.69
MD4/0-38FW				3/8	1.02	1.19	0.14	1.84	0.55	0.69
MD4/0-12FW				1/2	1.02	1.19	0.14	2.07	0.55	0.69
MD250-14FW	YELLOW	250KCM	135	1/4	1.11	1.06	0.15	1.82	0.63	0.77
MD250-56FW				5/16	1.11	1.06	0.15	1.83	0.63	0.77
MD250-38FW				3/8	1.11	1.06	0.15	1.90	0.63	0.77
MD250-12FW				1/2	1.11	1.06	0.15	2.13	0.63	0.77

One Hole Code Conductor Long Barrel, 90° Angle

One Hole
P1-5

- One hole 90° grounding lug
- Long barrel
- Color-Coded for Easy Identification
- Used for Power and Grounding Applications

One Hole
45°
P6-8



One Hole
90°
P9-11

RoHS  US

Two Hole
P12-18

Two Hole
45°
P19-24

Two Hole
90°
P25-30

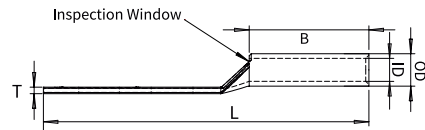
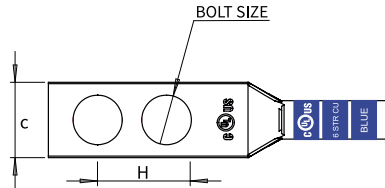
Four Hole
P31

Butt Splice
P32

Part No#		DIE COLOR	WIRE SIZE		BOLT SIZE	Tang Width	Barrel length	Tang Thickness	Over all length	Inner diameter	Outer diameter
	No inspection window		STR	mm ²		C	B	T	L	ID	OD
MDL1410-14FW	—	YELLOW	14-10#	4-6	1/4	0.41	0.69	0.05	0.94	0.13	0.22
MDL8-10FW	MDL8-10F	RED	8 AWG	10	#10	0.41	0.81	0.08	1.07	0.18	0.27
MDL8-14FW	MDL8-14F				1/4	0.44	0.81	0.08	1.07	0.18	0.27
MDL6-08FW	MDL6-08F	BLUE	6 AWG	16	#8	0.42	1.12	0.09	1.48	0.20	0.29
MDL6-10FW	MDL6-10F				#10	0.42	1.12	0.09	1.48	0.20	0.29
MDL6-14FW	MDL6-14F				1/4	0.41	1.12	0.09	1.48	0.20	0.29
MDL6-56FW	MDL6-56F				5/6	0.52	1.12	0.07	1.49	0.20	0.29
MDL6-38FW	MDL6-38F	GRAY	4 AWG	25	3/8	0.58	1.12	0.06	1.49	0.20	0.29
MDL4-10FW	MDL4-10F				#10	0.50	1.12	0.09	1.53	0.26	0.35
MDL4-14FW	MDL4-14F				1/4	0.50	1.12	0.09	1.53	0.26	0.35
MDL4-56FW	MDL4-56F	BROWN	2 AWG	38	5/16	0.52	1.12	0.12	1.53	0.26	0.35
MDL2-10FW	MDL2-10F				#10	0.60	1.25	0.11	1.74	0.31	0.42
MDL2-14FW	MDL2-14F				1/4	0.60	1.25	0.11	1.74	0.31	0.42
MDL2-56FW	MDL2-56F	GREEN	1 AWG	50	5/6	0.60	1.25	0.11	1.74	0.31	0.42
MDL1-10FW	MDL1-10F				#10	0.68	1.38	0.10	2.00	0.36	0.46
MDL1-14FW	MDL1-14F				1/4	0.68	1.38	0.10	2.00	0.36	0.46
MDL1-56FW	MDL1-56F	PINK	1/0 AWG	60	5/6	0.68	1.38	0.10	2.00	0.36	0.46
MDL1/0-10FW	MDL1/0-10F				#10	0.75	1.38	0.12	2.15	0.39	0.52
MDL1/0-56FW	MDL1/0-56F				5/6	0.75	1.38	0.13	2.15	0.39	0.52
MDL1/0-38FW	MDL1/0-38F				3/8	0.75	1.38	0.12	2.15	0.39	0.52
MDL1/0-12FW	MDL1/0-12F	BLACK	2/0 AWG	70	1/2	0.83	1.38	0.11	2.15	0.39	0.52
MDL2/0-38FW	MDL2/0-38F				3/8	0.83	1.50	0.12	2.30	0.45	0.56
MDL3/0-38FW	MDL3/0-38F				3/8	0.91	1.50	0.13	2.35	0.51	0.63
MDL3/0-12FW	MDL3/0-12F	ORANGE	3/0 AWG	95	1/2	0.91	1.50	0.13	2.35	0.51	0.63
MDL4/0-38FW	MDL4/0-38F	PURPLE	4/0 AWG	120	3/8	1.02	1.62	0.14	2.48	0.55	0.69
MDL4/0-12FW	MDL4/0-12F				1/2	1.02	1.62	0.14	2.48	0.55	0.69
MDL250-12FW	MDL250-12F	YELLOW	250KCM	135	1/2	1.11	1.62	0.14	2.54	0.63	0.77
MDL250-78FW	MDL250-78F				7/8	1.25	1.62	0.12	2.58	0.63	0.77

Two Hole Code Conductor Standard Barrel

- Two holes grounding lug
- Standard barrel
- Color-Coded for Easy Identification
- Used for Power and Grounding Applications



RoHS



One Hole
P1-5

One Hole
45°
P6-8

One Hole
90°
P9-11

Two Hole
P12-18

Two Hole
45°
P19-24

Two Hole
90°
P25-30

Four Hole
P31

Butt Splice
P32

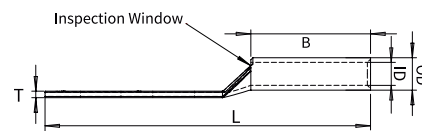
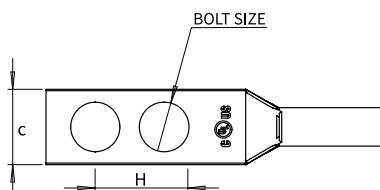
Part No#	DIE COLOR	WIRE SIZE		BOLT SIZE	Hole Spacing H	Tang Width C	Barrel length B	Tang Thickness T	Over all length L	Inner diameter ID	Outer diameter OD
		STR	mm ²								
MDD1410-1058W	YELLOW	14-10#	4-6	#10	5/8	0.36	0.38	0.06	1.72	0.13	0.22
MDD1410-1458W				1/4	5/8	0.41	0.38	0.05	1.84	0.13	0.22
MDD1410-1434W				1/4	3/4	0.41	0.38	0.05	1.97	0.13	0.22
MDD1410-1401W				1/4	1	0.41	0.38	0.05	2.22	0.13	0.22
MDD1410-3801W				3/8	1	0.56	0.38	0.04	2.40	0.13	0.22
MDD8-1058W	RED	8 AWG	10	#10	5/8	0.41	0.44	0.08	1.83	0.18	0.27
MDD8-1034W				#10	3/4	0.41	0.44	0.08	1.95	0.18	0.27
MDD8-1458W				1/4	5/8	0.44	0.44	0.08	1.95	0.18	0.27
MDD8-1434W				1/4	3/4	0.44	0.44	0.08	2.08	0.18	0.27
MDD8-1401W				1/4	1	0.44	0.44	0.08	2.33	0.18	0.27
MDD8-3801W				3/8	1	0.58	0.44	0.06	2.52	0.18	0.27
MDD8-1243W				1/2	1-3/4	0.83	0.44	0.12	3.75	0.18	0.27
MDDS6-1012W	BLUE	6 AWG	16	#10	1/2	0.42	0.54	0.09	1.79	0.20	0.29
MDDS6-1058W				#10	5/8	0.42	0.54	0.09	1.94	0.20	0.29
MDDS6-1001W				#10	1	0.42	0.54	0.09	2.52	0.20	0.29
MDDS6-1412W				1/4	1/2	0.45	0.54	0.08	1.94	0.20	0.29
MDDS6-1458W				1/4	5/8	0.45	0.54	0.08	2.07	0.20	0.29
MDDS6-1434W				1/4	3/4	0.45	0.54	0.08	2.19	0.20	0.29
MDDS6-1401W				1/4	1	0.45	0.54	0.08	2.44	0.20	0.29
MDDS6-5634W				5/6	3/4	0.52	0.54	0.07	2.53	0.20	0.29
MDDS6-5601W				5/6	1	0.52	0.54	0.07	2.78	0.20	0.29
MDDS6-3801W				3/8	1	0.58	0.54	0.06	2.63	0.20	0.29
MDDS6-1243W				1/2	1-3/4	0.83	0.54	0.12	4.10	0.20	0.29
MDD6-1058W				#10	5/8	0.42	0.81	0.08	2.15	0.20	0.29
MDD6-1034W				#10	3/4	0.42	0.81	0.08	2.27	0.20	0.29
MDD6-1001W				#10	1	0.42	0.81	0.08	2.52	0.20	0.29
MDD6-1458W				1/4	5/8	0.45	0.81	0.08	2.24	0.20	0.29
MDD6-1434W				1/4	3/4	0.45	0.81	0.08	2.36	0.20	0.29
MDD6-1401W				1/4	1	0.45	0.81	0.08	2.61	0.20	0.29
MDD6-5601W	5/6	1	0.56	0.81	0.07	2.73	0.20	0.29			

Two Hole Code Conductor Standard Barrel

One Hole
P1-5

- Two holes grounding lug
- Standard barrel
- Color-Coded for Easy Identification
- Used for Power and Grounding Applications

One Hole
45°
P6-8



One Hole
90°
P9-11

RoHS 

Two Hole
P12-18

Two Hole
45°
P19-24

Two Hole
90°
P25-30

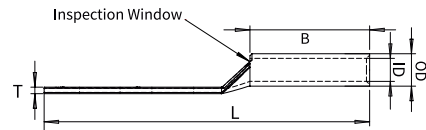
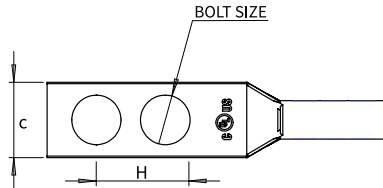
Four Hole
P31

Butt Splice
P32

Part No#	DIE COLOR	WIRE SIZE		BOLT SIZE	Hole Spacing H	Tang Width C	Barrel length B	Tang Thickness T	Over all length L	Inner diameter ID	Outer diameter OD			
		STR	mm ²											
MDD6-3801W	BLUE	6 AWG	16	3/8	1	0.62	0.81	0.06	2.83	0.20	0.29			
MDDS4-1458W	GRAY	4 AWG	25	1/4	5/8	0.55	0.50	0.09	2.08	0.26	0.35			
MDDS4-1434W				1/4	3/4	0.55	0.50	0.09	2.20	0.26	0.35			
MDDS4-1401W				1/4	1	0.55	0.50	0.09	2.45	0.26	0.35			
MDDS4-5601W				5/16	1	0.55	0.50	0.09	2.52	0.26	0.35			
MDDS4-3801W				3/8	1	0.58	0.50	0.08	2.68	0.26	0.35			
MDDS4-1243W				1/2	1-3/4	0.83	0.50	0.12	3.87	0.26	0.35			
MDD4-1458W				1/4	5/8	0.50	0.81	0.09	2.30	0.26	0.35			
MDD4-1434W				1/4	3/4	0.50	0.81	0.09	2.49	0.26	0.35			
MDD4-1401W				1/4	1	0.50	0.81	0.09	2.74	0.26	0.35			
MDD4-5601W				5/16	1	0.52	0.81	0.09	2.80	0.26	0.35			
MDD4-3801W				3/8	1	0.58	0.81	0.08	2.96	0.26	0.35			
MDD4-1243W				1/2	1-3/4	0.83	0.81	0.12	4.14	0.26	0.35			
MDD2-1458W	BROWN	2 AWG	38	1/4	5/8	0.60	0.88	0.11	2.47	0.31	0.42			
MDD2-1434W				1/4	3/4	0.60	0.88	0.11	2.60	0.31	0.42			
MDD2-1401W				1/4	1	0.60	0.88	0.11	2.85	0.31	0.42			
MDD2-5634W				5/16	3/4	0.60	0.88	0.11	2.67	0.31	0.42			
MDD2-5601W				5/16	1	0.60	0.88	0.11	2.91	0.31	0.42			
MDD2-3801W				3/8	1	0.60	0.88	0.11	3.03	0.31	0.42			
MDD2-1243W				1/2	1-3/4	0.83	0.88	0.12	4.27	0.31	0.42			
MDDS1-1458W				GREEN	1 AWG	50	1/4	5/8	0.68	0.63	0.10	2.26	0.36	0.46
MDDS1-1434W							1/4	3/4	0.68	0.63	0.10	2.38	0.36	0.46
MDDS1-1401W							1/4	1	0.68	0.63	0.10	2.63	0.36	0.46
MDDS1-5601W							5/16	1	0.68	0.63	0.10	2.71	0.36	0.46
MDDS1-3801W							3/8	1	0.68	0.63	0.10	2.82	0.36	0.46
MDDS1-1243W	1/2	1-3/4	0.83				0.63	0.08	4.07	0.36	0.46			
MDD1-1458W	1/4	5/8	0.68				0.88	0.10	2.51	0.36	0.46			
MDD1-1434W	1/4	3/4	0.68				0.88	0.10	2.64	0.36	0.46			
MDD1-5678W	5/16	7/8	0.68				0.88	0.10	2.82	0.36	0.46			

Two Hole Code Conductor Standard Barrel

- Two holes grounding lug
- Standard barrel
- Color-Coded for Easy Identification
- Used for Power and Grounding Applications



RoHS



One Hole
P1-5

One Hole
45°
P6-8

One Hole
90°
P9-11

Two Hole
P12-18

Two Hole
45°
P19-24

Two Hole
90°
P25-30

Four Hole
P31

Butt Splice
P32

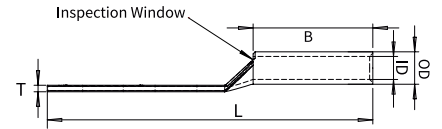
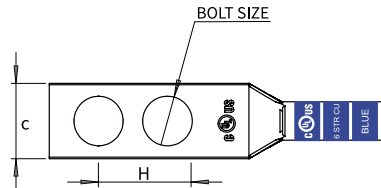
Part No#	DIE COLOR	WIRE SIZE		BOLT SIZE	Hole Spacing H	Tang Width C	Barrel length B	Tang Thickness T	Over all length L	Inner diameter ID	Outer diameter OD
		STR	mm ²								
MDD1-3801W	GREEN	1 AWG	50	3/8	1	0.68	0.88	0.10	3.07	0.36	0.46
MDD1-1243W				1/2	1-3/4	0.83	0.88	0.12	4.32	0.36	0.46
MDD1/0-1458W	PINK	1/0 AWG	60	1/4	5/8	0.75	0.88	0.12	2.54	0.39	0.52
MDD1/0-1434W				1/4	3/4	0.75	0.88	0.12	2.66	0.39	0.52
MDD1/0-1401W				1/4	1	0.75	0.88	0.12	2.91	0.39	0.52
MDD1/0-5678W				5/16	7/8	0.75	0.88	0.12	2.85	0.39	0.52
MDD1/0-3801W				3/8	1	0.75	0.88	0.12	3.10	0.39	0.52
MDD1/0-1243W				1/2	1-3/4	0.83	0.88	0.11	4.29	0.39	0.52
MDD2/0-1458W	BLACK			1/4	5/8	0.83	0.94	0.12	2.64	0.45	0.56
MDD2/0-1434W				1/4	3/4	0.83	0.94	0.12	2.76	0.45	0.56
MDD2/0-1401W				1/4	1	0.83	0.94	0.12	3.01	0.45	0.56
MDD2/0-5678W				5/16	7/8	0.83	0.94	0.12	2.95	0.45	0.56
MDD2/0-3801W				3/8	1	0.83	0.94	0.12	3.20	0.45	0.56
MDD2/0-1243W				1/2	1-3/4	0.83	0.94	0.12	4.39	0.45	0.56
MDD3/0-1434W	ORANGE	3/0 AWG	95	1/4	3/4	0.91	1.00	0.13	2.86	0.51	0.63
MDD3/0-5601W				5/16	1	0.93	1.00	0.13	3.25	0.51	0.63
MDD3/0-3801W				3/8	1	0.91	1.00	0.13	3.30	0.51	0.63
MDD3/0-1243W				1/2	1-3/4	0.91	1.00	0.13	4.48	0.51	0.63
MDDS4/0-1434W	PURPLE	4/0 AWG	120	1/4	3/4	1.02	0.88	0.14	2.78	0.55	0.69
MDDS4/0-1401W				1/4	1	1.02	0.88	0.14	3.03	0.55	0.69
MDDS4/0-5643W				5/16	1-3/4	1.02	0.88	0.14	3.84	0.55	0.69
MDDS4/0-3834W				3/8	3/4	1.02	0.88	0.14	2.97	0.55	0.69
MDDS4/0-3801W				3/8	1	1.02	0.88	0.14	3.22	0.55	0.69
MDDS4/0-1243W				1/2	1-3/4	1.02	0.88	0.14	4.41	0.55	0.69
MDD4/0-1434W				1/4	3/4	1.02	1.19	0.14	3.10	0.55	0.69
MDD4/0-3801W				3/8	1	1.02	1.19	0.14	3.44	0.55	0.69
MDD4/0-1243W				1/2	1-3/4	1.02	1.19	0.14	4.58	0.55	0.69
MDD250-3801W				YELLOW	250KCM	135	3/8	1	1.14	1.25	0.15
MDD250-1243W	1/2	1-3/4	1.14				1.25	0.15	4.68	0.63	0.77

Two Hole Code Conductor Standard Barrel Narrow Tongue

One Hole
P1-5

- Two holes grounding lug
- Standard barrel narrow tongue
- Color-Coded for Easy Identification
- Used for Power and Grounding Applications

One Hole
45°
P6-8



One Hole
90°
P9-11

RoHS 

Two Hole
P12-18

Part No#	DIE COLOR	WIRE SIZE		BOLT SIZE	Hole Spacing H	Tang Width C	Barrel length B	Tang Thickness T	Over all length L	Inner diameter ID	Outer diameter OD
		STR	mm ²								
MDD2-1414WNT	BROWN	2 AWG	38	1/4	1/4	0.48	0.88	0.11	2.60	0.31	0.42
MDD2-1458WNT				1/4	5/8	0.48	0.88	0.11	2.47	0.31	0.42
MDD2-1401WNT				1/4	1	0.48	0.88	0.11	2.84	0.31	0.42
MDDS1-1458WNT	GREEN	1 AWG	50	1/4	5/8	0.48	0.63	0.10	2.26	0.36	0.46
MDD1-1458WNT				1/4	5/8	0.50	0.88	0.10	2.55	0.36	0.46
MDD1-1434WNT				1/4	3/4	0.50	0.88	0.10	2.68	0.36	0.46
MDD1/0-1458WNT	PINK	1/0 AWG	60	1/4	5/8	0.48	0.88	0.12	2.56	0.39	0.52
MDD1/0-1401WNT				1/4	1	0.48	0.88	0.12	3.28	0.39	0.52
MDD2/0-1458WNT	BLACK	2/0 AWG	70	1/4	5/8	0.48	0.94	0.12	2.66	0.45	0.56
MDD2/0-1401WNT				1/4	1	0.48	0.94	0.12	3.03	0.45	0.56
MDD3/0-1458WNT	ORANGE	3/0 AWG	95	1/4	5/8	0.60	1.00	0.13	2.73	0.51	0.63
MDD3/0-5601WNT				5/16	1	0.60	1.00	0.13	3.26	0.51	0.63
MDD3/0-3801WNT				3/8	1	0.60	1.00	0.13	3.30	0.51	0.63
MDD4/0-1458WNT	PURPLE	4/0 AWG	120	1/4	5/8	0.76	0.88	0.13	2.65	0.55	0.69
MDD250-3801WNT	YELLOW	250KCM	135	3/8	1	0.80	1.03	0.15	3.43	0.63	0.77
MDD250-3843WNT				3/8	1-3/4	0.80	1.06	0.15	4.18	0.63	0.77

Two Hole
45°
P19-24

Two Hole
90°
P25-30

Two Hole Code Conductor Long Barrel Narrow Tongue

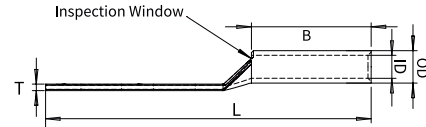
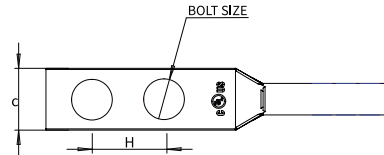
Four Hole
P31

Part No#	DIE COLOR	WIRE SIZE		BOLT SIZE	Hole Spacing H	Tang Width C	Barrel length B	Tang Thickness T	Over all length L	Inner diameter ID	Outer diameter OD
		STR	mm ²								
MDDL1-1458WNT	GREEN	1 AWG	50	43834	0.63	0.50	1.38	0.13	2.87	0.36	0.46
MDDL1-1434WNT				43834	0.75	0.50	1.38	0.13	3.14	0.36	0.46
MDDL2/0-1458WNT	BLACK	2/0 AWG	70	43834	0.62	0.48	1.50	0.12	3.35	0.45	0.58
MDD250-1458WNT	YELLOW	250KCM	135	43834	0.63	0.76	1.62	0.17	3.40	0.63	0.77
MDDL250-1401WNT				43834	1	0.76	1.62	0.17	3.77	0.63	0.77
MDDL250-3801WNT				43898	1	0.94	1.62	0.17	3.96	0.63	0.77

Butt Splice
P32

Two Hole Code Conductor Long Barrel

- Two holes grounding lug
- Long barrel
- Color-Coded for Easy Identification
- Used for Power and Grounding Applications



RoHS  US

One Hole
P1-5

One Hole
45°
P6-8

One Hole
90°
P9-11

Two Hole
P12-18

Two Hole
45°
P19-24

Two Hole
90°
P25-30

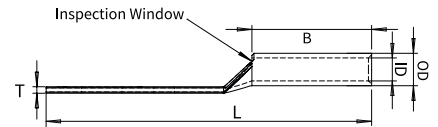
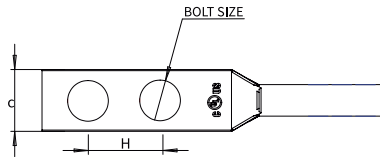
Four Hole
P31

Butt Splice
P32

Part No#		DIE COLOR	WIRE SIZE		BOLT SIZE	Hole Spacing H	Tang Width C	Barrel length B	Tang Thicknes T	Over all length L	Inner diameter ID	Outer diameter OD
	No inspection window		STR	mm ²								
MDDL1410-1458W	MDDL1410-1458	YELLOW	14-10#	4-6	1/4	5/8	0.41	0.69	0.05	2.16	0.13	0.22
MDDL1410-1401W	MDDL1410-1401				1/4	1	0.41	0.69	0.05	2.53	0.13	0.22
MDDL1410-1434W	—				1/4	3/4	0.41	0.69	0.05	2.28	0.13	0.22
MDDL1410-3801W	MDDL1410-3801				3/8	1	0.61	0.69	0.05	2.72	0.13	0.22
MDDL8-1058W	MDDL8-1058	RED	8 AWG	10	#10	5/8	0.41	0.81	0.08	2.07	0.18	0.27
MDDL8-1034W	MDDL8-1034				#10	3/4	0.41	0.81	0.08	2.19	0.18	0.27
MDDL8-10UW	MDDL8-10U				#10	5/8-3/4	0.44	0.81	0.08	2.21	0.18	0.27
MDDL8-1458W	MDDL8-1458				1/4	5/8	0.44	0.81	0.08	2.19	0.18	0.27
MDDL8-1434W	MDDL8-1434				1/4	3/4	0.44	0.81	0.08	2.32	0.18	0.27
MDDL8-1401W	—				1/4	1	0.44	0.81	0.08	2.57	0.18	0.27
MDDL8-3801W	MDDL8-3801				3/8	1	0.58	0.81	0.06	2.76	0.18	0.27
MDDL6-1034W	MDDL6-1034	BLUE	6 AWG	16	#10	3/4	0.42	1.12	0.09	2.65	0.20	0.29
MDDL6-1458W	MDDL6-1458				1/4	5/8	0.45	1.12	0.08	2.65	0.20	0.29
MDDL6-1434W	MDDL6-1434				1/4	3/4	0.45	1.12	0.08	2.78	0.20	0.29
MDDL6-1401W	MDDL6-1401				1/4	1	0.45	1.12	0.08	3.03	0.20	0.29
MDDL6-3834W	MDDL6-3834				3/8	3/4	0.58	1.12	0.06	2.97	0.20	0.29
MDDL6-3878W	MDDL6-3878				3/8	7/8	0.58	1.12	0.06	3.09	0.20	0.29
MDDL6-3801W	MDDL6-3801				3/8	1	0.58	1.12	0.06	3.22	0.20	0.29
MDDL6-38UW	MDDL6-38U				3/8	5/8-3/4	0.58	1.12	0.06	3.22	0.20	0.29
MDDL6-3843W	—				3/8	1-3/4	0.58	1.12	0.06	3.97	0.20	0.29
MDDL6-1243W	—				1/3	1-3/4	0.83	1.12	0.12	4.40	0.20	0.29
MDDL4-1034W	—	GRAY	4 AWG	25	#10	3/4	0.50	1.12	0.09	2.67	0.26	0.35
MDDL4-1458W	MDDL4-1458				1/4	5/8	0.50	1.12	0.09	2.70	0.26	0.35
MDDL4-1434W	MDDL4-1434				1/4	3/4	0.50	1.12	0.09	2.80	0.26	0.35

Two Hole Code Conductor Long Barrel

- Two holes grounding lug
- Long barrel
- Color-Coded for Easy Identification
- Used for Power and Grounding Applications

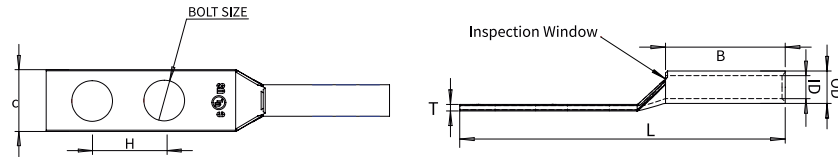


RoHS **cULUS**

Part No#	DIE COLOR	WIRE SIZE		BOLT SIZE	Hole Spacing H	Tang Width C	Barrel length B	Tang Thickness T	Over all length L	Inner diameter ID	Outer diameter OD	
		STR	mm ²									
		No inspection window										
MDDL4-3801W	MDDL4-3801	GRAY	4 AWG	25	3/8	1	0.58	1.12	0.08	3.23	0.26	0.35
MDDL4-38UW	MDDL4-38U				3/8	37712	0.58	1.12	0.08	3.29	0.26	0.35
MDDL4-1243W	MDDL4-1243				1/2	36954	0.83	1.12	0.12	4.45	0.26	0.35
MDDL2-1034W	—	BROWN	2 AWG	38	#10	43894	0.60	1.25	0.11	2.85	0.31	0.42
MDDL2-1458W	MDDL2-1458				1/4	5/8	0.60	1.25	0.11	2.85	0.31	0.42
MDDL2-1434W	MDDL2-1434				1/4	3/4	0.60	1.25	0.11	2.97	0.31	0.42
MDDL2-1401W	MDDL2-1401				1/4	1	0.60	1.25	0.11	3.22	0.31	0.42
MDDL2-5658W	—				5/16	5/8	0.60	1.25	0.11	2.91	0.31	0.42
MDDL2-5634W	MDDL2-5634				5/16	3/4	0.60	1.25	0.11	3.03"	0.31	0.42
MDDL2-3834W	MDDL2-3834				3/8	3/4	0.60	1.25	0.11	3.16	0.31	0.42
MDDL2-3878W	MDDL2-3878				3/8	7/8	0.60	1.25	0.11	3.28	0.31	0.42
MDDL2-3801W	MDDL2-3801				3/8	1	0.60	1.25	0.11	3.41	0.31	0.42
MDDL2-38UW	MDDL2-38U				3/8	5/8-3/4	0.60	1.25	0.11	3.42	0.31	0.42
MDDL2-3843W	MDDL2-3843	3/8	1-3/4	0.60	1.25	0.11	4.16	0.31	0.42			
MDDL2-1243W	MDDL2-1243	1/2	1-3/4	0.83	1.25	0.12	4.64	0.31	0.42			
MDDL1-1458W	MDDL1-1458	GREEN	1 AWG	50	1/4	5/8	0.67	1.38	0.10	3.01	0.36	0.46
MDDL1-1434W	MDDL1-1434				1/4	3/4	0.67	1.38	0.10	3.13	0.36	0.46
MDDL1-3801W	MDDL1-3801				3/8	1	0.67	1.38	0.10	3.57	0.36	0.46
MDDL1-1243W	MDDL1-1243				1/2	1-3/4	0.83	1.38	0.12	4.82	0.36	0.46
MDDL1/0-1458W	MDDL1/0-1458	PINK	1/0 AWG	60	1/4	5/8	0.75	1.38	0.12	3.04	0.39	0.52
MDDL1/0-1434W	MDDL1/0-1434				1/4	3/4	0.75	1.38	0.12	3.16	0.39	0.52
MDDL1/0-1401W	—				1/4	1	0.75	1.38	0.12	3.41	0.39	0.52
MDDL1/0-5678W	—				5/16	7/8	0.75	1.38	0.12	3.35	0.39	0.52
MDDL1/0-5601W	MDDL1/0-5601				5/16	1	0.75	1.38	0.12	3.47	0.39	0.52

Two Hole Code Conductor Long Barrel

- Two holes grounding lug
- Long barrel
- Color-Coded for Easy Identification
- Used for Power and Grounding Applications



RoHS  US

One Hole
P1-5

One Hole
45°
P6-8

One Hole
90°
P9-11

Part No#		DIE COLOR	WIRE SIZE		BOLT SIZE	Hole Spacing H	Tang Width C	Barrel length B	Tang Thickness T	Over all length L	Inner diameter ID	Outer diameter OD
	No inspection window		STR	mm ²								
MDDL1/0-3801W	MDDL1/0-3801	PINK	1/0 AWG	60	3/8	1	0.75	1.38	0.12	3.60	0.39	0.52
MDDL1/0-3843W	MDDL1/0-3843				3/8	1-3/4	0.75	1.38	0.12	4.35	0.39	0.52
MDDL1/0-1243W	MDDL1/0-1243				1/2	1-3/4	0.83	1.38	0.11	4.79	0.39	0.52
MDDL2/0-1458W	MDDL2/0-1458	BLACK			1/4	5/8	0.83	1.50	0.12	3.20	0.45	0.56
MDDL2/0-1434W	MDDL2/0-1434				1/4	3/4	0.83	1.50	0.12	3.32	0.45	0.56
MDDL2/0-1401W	—				1/4	1	0.83	1.50	0.12	3.57	0.45	0.56
MDDL2/0-3801W	MDDL2/0-3801				3/8	1	0.83	1.50	0.12	3.76	0.45	0.56
MDDL2/0-3843W	—				3/8	1-3/4	0.83	1.50	0.12	4.51	0.45	0.56
MDDL2/0-1243W	MDDL2/0-1243				1/2	1-3/4	0.83	1.50	0.12	4.95	0.45	0.56
MDDL3/0-1434W	MDDL3/0-1434	ORANGE	3/0 AWG	95	1/4	3/4	0.91	1.50	0.12	3.32	0.51	0.63
MDDL3/0-3801W	MDDL3/0-3801				3/8	1	0.91	1.50	0.12	3.76	0.51	0.63
MDDL3/0-1243W	MDDL3/0-1243				1/2	1-3/4	0.91	1.50	0.13	4.95	0.51	0.63
MDDL4/0-1458W	—	PURPLE	4/0 AWG	120	1/4	5/8	1.02	1.62	0.14	3.30	0.55	0.69
MDDL4/0-1434W	MDDL4/0-1434				1/4	3/4	1.02	1.62	0.14	3.55	0.55	0.69
MDDL4/0-3801W	MDDL4/0-3801				3/8	1	1.02	1.62	0.14	3.99	0.55	0.69
MDDL4/0-3843W	MDDL4/0-3843				3/8	1-3/4	1.02	1.62	0.14	4.74	0.55	0.69
MDDL4/0-1243W	MDDL4/0-1243				1/2	1-3/4	1.02	1.62	0.14	5.15	0.55	0.69
MDDL250-1458W	—	YELLOW	250KCM	135	1/4	5/8	1.14	1.62	0.15	3.24	0.63	0.77
MDDL250-1434W	MDDL250-1434				1/4	3/4	1.14	1.62	0.15	3.52	0.63	0.77
MDDL250-3801W	MDDL250-3801				3/8	1	1.14	1.62	0.15	3.96	0.63	0.77
MDDL250-1243W	MDDL250-1243				1/2	1-3/4	1.14	1.62	0.15	4.93	0.63	0.77
MDDL500-3801W	MDDL500-3801	PINK	500 kcmil	240	3/8	1	1.55	2.25	0.23	4.85	0.84	1.06
MDDL500-1243W	MDDL500-1243				1/2	1-3/4	1.55	2.25	0.23	6.04	0.84	1.06
MDDL600-3801W	MDDL600-3801	GREEN	600 kcmil	300	3/8	1	1.70	2.69	0.26	5.20	0.92	1.19
MDDL600-1243W	MDDL600-1243				1/2	1-3/4	1.70	2.69	0.26	6.36	0.92	1.19

Two Hole
P12-18

Two Hole
45°
P19-24

Two Hole
90°
P25-30

Four Hole
P31

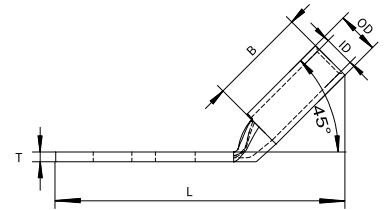
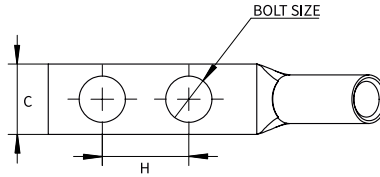
Butt Splice
P32

Two Hole Code Conductor Standard Barrel, 45° Angle

One Hole
P1-5

- Two holes 45° grounding lug
- Standard barrel
- Color-Coded for Easy Identification
- Used for Power and Grounding Applications

One Hole
45°
P6-8



One Hole
90°
P9-11

RoHS 

Two Hole
P12-18

Two Hole
45°
P19-24

Two Hole
90°
P25-30

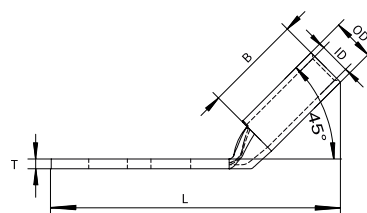
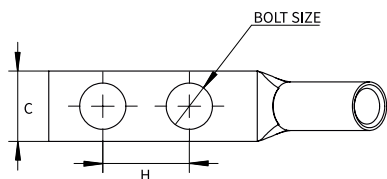
Four Hole
P31

Butt Splice
P32

Part No#	DIE COLOR	WIRE SIZE		BOLT SIZE	Hole Spacing H	Tang Width C	Barrel length B	Tang Thickness T	Over all length L	Inner diameter ID	Outer diameter OD
		STR	mm ²								
MDD1410-1058HW	YELLOW	14-10#	4-6	#10	5/8	0.36	0.38	0.06	1.59	0.13	0.22
MDD1410-1458HW				1/4	5/8	0.41	0.38	0.05	1.67	0.13	0.22
MDD1410-1434HW				1/4	3/4	0.41	0.38	0.05	1.79	0.13	0.22
MDD1410-1401HW				1/4	1	0.41	0.38	0.05	2.04	0.13	0.22
MDD1410-3801HW				3/8	1	0.56	0.38	0.04	2.28	0.13	0.22
MDD8-1058HW	RED	8 AWG	10	#10	5/8	0.41	0.44	0.08	1.70	0.18	0.27
MDD8-1458HW				1/4	5/8	0.44	0.44	0.08	1.79	0.18	0.27
MDD8-1434HW				1/4	3/4	0.44	0.44	0.08	1.92	0.18	0.27
MDD8-1401HW				1/4	1	0.44	0.44	0.08	2.17	0.18	0.27
MDD8-3801HW				3/8	1	0.58	0.44	0.06	2.38	0.18	0.27
MDDS6-1058HW	BLUE	6 AWG	16	#10	5/8	0.42	0.54	0.09	1.73	0.20	0.29
MDDS6-1034HW				#10	3/4	0.42	0.54	0.09	1.85	0.20	0.29
MDDS6-1001HW				#10	1	0.42	0.54	0.08	2.10	0.20	0.29
MDDS6-1412HW				1/4	1/2	0.45	0.54	0.08	1.69	0.20	0.29
MDDS6-1458HW				1/4	5/8	0.45	0.54	0.08	1.81	0.20	0.29
MDDS6-1434HW				1/4	3/4	0.45	0.54	0.08	1.94	0.20	0.29
MDDS6-1401HW				3/8	1	0.45	0.54	0.08	2.19	0.20	0.29
MDDS6-5634HW				5/16	3/4	0.52	0.54	0.07	2.05	0.20	0.29
MDDS6-5601HW				5/16	1	0.52	0.54	0.07	2.30	0.20	0.29
MDDS6-3801HW				3/8	1	0.58	0.54	0.06	2.40	0.20	0.29
MDD6-1058HW				#10	5/8	0.42	0.81	0.08	1.92	0.20	0.29
MDD6-1034HW				#10	3/4	0.42	0.81	0.08	2.04	0.20	0.29
MDD6-1001HW				#10	1	0.42	0.81	0.08	2.29	0.20	0.29
MDD6-1458HW				1/4	5/8	0.45	0.81	0.08	2.00	0.20	0.29
MDD6-1434HW				1/4	3/4	0.45	0.81	0.08	2.13	0.20	0.29
MDD6-1401HW	1/4	1	0.45	0.81	0.08	2.38	0.20	0.29			
MDD6-5601HW	5/16	1	0.56	0.81	0.07	2.49	0.20	0.29			
MDD6-3801HW	3/8	1	0.62	0.81	0.06	2.59	0.20	0.29			

Two Hole Code Conductor Standard Barrel, 45° Angle

- Two holes 45° grounding lug
- Standard barrel
- Color-Coded for Easy Identification
- Used for Power and Grounding Applications



RoHS 

One Hole
P1-5

One Hole
45°
P6-8

One Hole
90°
P9-11

Two Hole
P12-18

Two Hole
45°
P19-24

Two Hole
90°
P25-30

Four Hole
P31

Butt Splice
P32

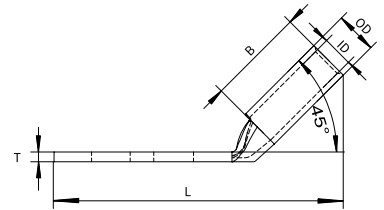
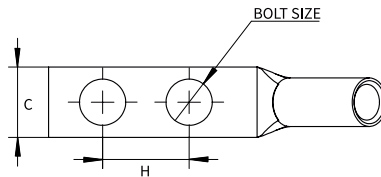
Part No#	DIE COLOR	WIRE SIZE		BOLT SIZE	Hole Spacing H	Tang Width C	Barrel length B	Tang Thickness T	Over all length L	Inner diameter ID	Outer diameter OD
		STR	mm ²								
MDD4-1058HW	GRAY	4 AWG	25	#10	5/8	0.50	0.81	0.09	1.94	0.26	0.35
MDD4-1034HW				#10	3/4	0.50	0.81	0.09	2.06	0.26	0.35
MDD4-1458HW				1/4	5/8	0.50	0.81	0.09	2.03	0.26	0.35
MDD4-1434HW				1/4	3/4	0.50	0.81	0.09	2.15	0.26	0.35
MDD4-1401HW				1/4	1	0.50	0.81	0.09	2.40	0.26	0.35
MDD4-5601HW				5/16	1	0.52	0.81	0.09	2.40	0.26	0.35
MDD4-3801HW				3/8	1	0.58	0.81	0.08	2.62	0.26	0.35
MDD2-1458HW	BROWN	2 AWG	38	1/4	5/8	0.60	0.88	0.11	2.11	0.31	0.42
MDD2-1434HW				1/4	3/4	0.60	0.88	0.11	2.24	0.31	0.42
MDD2-1401HW				1/4	1	0.60	0.88	0.11	2.49	0.31	0.42
MDD2-5634HW				5/16	3/4	0.60	0.88	0.11	2.36	0.31	0.42
MDD2-3801HW				3/8	1	0.60	0.88	0.11	2.71	0.31	0.42
MDD2-1243HW	1/2	1-3/4	0.83	0.88	0.12	3.84	0.31	0.42			
MDD1-1458HW	GREEN	1 AWG	50	1/4	5/8	0.68	0.88	0.10	2.12	0.36	0.46
MDD1-1434HW				1/4	3/4	0.68	0.88	0.10	2.25	0.36	0.46
MDD1-5678HW				5/16	7/8	0.68	0.88	0.10	2.50	0.36	0.46
MDD1-3801HW				3/8	1	0.68	0.88	0.10	2.70	0.36	0.46
MDD1-1243HW				1/2	1-3/4	0.83	0.88	0.12	3.87	0.36	0.46
MDD1/0-1458HW	PINK	1/0 AWG	60	1/4	5/8	0.75	0.88	0.12	2.26	0.39	0.52
MDD1/0-1434HW				1/4	3/4	0.75	0.88	0.12	2.38	0.39	0.52
MDD1/0-5678HW				5/16	7/8	0.75	0.88	0.12	2.56	0.39	0.52
MDD1/0-3801HW				3/8	1"	0.75	0.88	0.12	2.76	0.39	0.52
MDD1/0-1243HW				1/2	1-3/4	0.83	0.88	0.11	3.93	0.39	0.52
MDD2/0-1458HW	BLACK			1/4	5/8	0.83	0.94	0.12	2.38	0.45	0.56
MDD2/0-1434HW				1/4	3/4	0.83	0.94	0.12	2.52	0.45	0.56
MDD2/0-5678HW				5/16	7/8	0.83	0.94	0.12	2.64	0.45	0.56
MDD2/0-3801HW				3/8	1	0.83	0.94	0.12	2.83	0.45	0.56
MDD2/0-1243HW				1/2	1-3/4	0.83	0.94	0.12	3.99	0.45	0.56

Two Hole Code Conductor Standard Barrel, 45° Angle

One Hole
P1-5

- Two holes 45° grounding lug
- Standard barrel
- Color-Coded for Easy Identification
- Used for Power and Grounding Applications

One Hole
45°
P6-8



One Hole
90°
P9-11

RoHS 

Two Hole
P12-18

Part No#	DIE COLOR	WIRE SIZE		BOLT SIZE	Hole Spacing	Tang Width	Barrel length	Tang Thickness	Over all length	Inner diameter	Outer diameter
		STR	mm ²								
MDD3/0-1434HW	ORANGE	3/0 AWG	95	1/4	3/4	0.91	1.00	0.13	2.50	0.51	0.63
MDD3/0-3801HW				3/8	1	0.91	1.00	0.13	2.90	0.51	0.63
MDD3/0-1243HW				1/2	1-3/4	0.91	1.00	0.13	4.08	0.51	0.63
MDDS4/0-1434HW	PURPLE	4/0 AWG	120	1/4	3/4	1.02	0.88	0.14	2.50	0.55	0.69
MDDS4/0-1401HW				1/4	1	1.02	0.88	0.14	2.75	0.55	0.69
MDDS4/0-5643HW				5/16	1-3/4	1.02	0.88	0.14	3.50	0.55	0.69
MDDS4/0-3834HW				3/8	3/4	1.02	0.88	0.14	2.58	0.55	0.69
MDDS4/0-3801HW				3/8	1	1.02	0.88	0.14	2.83	0.55	0.69
MDDS4/0-1243HW				1/2	1-3/4	1.02	0.88	0.14	3.97	0.55	0.69
MDD4/0-1434HW				1/4	3/4	1.02	1.19	0.14	2.72	0.55	0.69
MDD4/0-3801HW				3/8	1	1.02	1.19	0.14	3.05	0.55	0.69
MDD4/0-1243HW				1/2	1-3/4	1.02	1.19	0.14	4.19	0.55	0.69
MDD250-3801HW				YELLOW	250KCM	135	3/8	1	1.14	1.25	0.15
MDD250-1243HW	1/2	1-3/4	1.14				1.25	0.15	4.27	0.63	0.77

Two Hole
45°
P19-24

Two Hole
90°
P25-30

Two Hole Code Conductor Standard Barrel Narrow Tongue, 45°

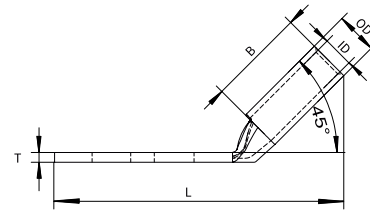
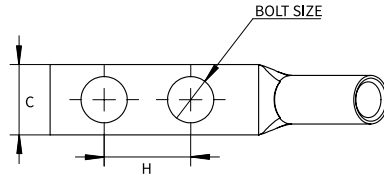
Four Hole
P31

Part No#	DIE COLOR	WIRE SIZE		BOLT SIZE	Hole Spacing	Tang Width	Barrel length	Tang Thickness	Over all length	Inner diameter	Outer diameter
		STR	mm ²								
MDD2-1458HWNT	BROWN	2 AWG	38	1/4	5/8	0.48	0.88	0.11	2.12	0.31	0.42
MDD2-1401HWNT				1/4	1	0.48	0.88	0.11	2.49	0.31	0.42
MDD1/0-1401HWNT	PINK	1/0 AWG	60	1/4	1	0.48	0.88	0.12	2.60	0.39	0.52
MDD1/0-5601HWNT				5/16	1	0.48	0.88	0.12	2.67	0.39	0.52

Butt Splice
P32

Two Hole Code Conductor Long Barrel, 45° Angle

- Two holes 45° grounding lug
- Long barrel
- Color-Coded for Easy Identification
- Used for Power and Grounding Applications



RoHS 

One Hole
P1-5

One Hole
45°
P6-8

One Hole
90°
P9-11

Two Hole
P12-18

Two Hole
45°
P19-24

Two Hole
90°
P25-30

Four Hole
P31

Butt Splice
P32

Part No#		DIE COLOR	WIRE SIZE		BOLT SIZE	Hole Spacing H	Tang Width C	Barrel length B	Tang Thickness T	Over all length L	Inner diameter ID	Outer diameter OD
	No inspection window		STR	mm ²								
MDDL1410-1458HW	—	YELLOW	14-10#	4-6	1/4"	5/8"	0.41	0.69	0.05	1.82	0.13	0.22
MDDL1410-1434HW	—		14-10#	4-6	1/4"	3/4"	0.41	0.69	0.05	1.94	0.13	0.22
MDDL8-1058HW	MDDL8-1058H	RED	8 AWG	10	#10	5/8"	0.41	0.81	0.08	1.82	0.18	0.27
MDDL8-1034HW	—		8 AWG	10	#10	3/4"	0.41	0.81	0.08	1.95	0.18	0.27
MDDL8-1458HW	MDDL8-1458H		8 AWG	10	1/4"	5/8"	0.44	0.81	0.08	1.91	0.18	0.27
MDDL8-1434HW	MDDL8-1434H		8 AWG	10	1/4"	3/4"	0.44	0.81	0.08	2.03	0.18	0.27
MDDL8-1401HW	—		8 AWG	10	1/4"	1"	0.44	0.81	0.08	2.28	0.18	0.27
MDDL8-3801HW	MDDL8-3801H		8 AWG	10	3/8"	1"	0.58	0.81	0.06	2.49	0.18	0.27
MDDL6-1058HW	MDDL6-1058H	BLUE	6 AWG	16	#10	5/8"	0.42	1.12	0.09	2.11	0.20	0.29
MDDL6-1034HW	—		6 AWG	16	#10	3/4"	0.42	1.12	0.09	2.24	0.20	0.29
MDDL6-1412HW	—		6 AWG	16	1/4"	1/2"	0.45	1.12	0.08	2.08	0.20	0.29
MDDL6-1458HW	MDDL6-1458H		6 AWG	16	1/4"	5/8"	0.45	1.12	0.08	2.20	0.20	0.29
MDDL6-1434HW	MDDL6-1434H		6 AWG	16	1/4"	3/4"	0.45	1.12	0.08	2.33	0.20	0.29
MDDL6-14UHW	—		6 AWG	16	1/4"	1/2-5/8"	0.45	1.12	0.08	2.10	0.20	0.29
MDDL6-1401HW	MDDL6-1401H		6 AWG	16	1/4"	1"	0.45	1.12	0.08	2.58	0.20	0.29
MDDL6-5634HW	—		6 AWG	16	5/16"	3/4"	0.56	1.12	0.08	2.44	0.20	0.29
MDDL6-3834HW	—		6 AWG	16	3/8"	3/4"	0.58	1.12	0.06	2.54	0.20	0.29
MDDL6-3878HW	—		6 AWG	16	3/8"	7/8"	0.58	1.12	0.06	2.68	0.20	0.29
MDDL6-3801HW	MDDL6-3801H	6 AWG	16	3/8"	1"	0.58	1.12	0.06	2.79	0.20	0.29	
MDDL6-38UHW	—	6 AWG	16	3/8"	3/4-1"	0.58	1.12	0.06	2.79	0.20	0.29	
MDDL4-1058HW	—	GRAY	4 AWG	25	#10	5/8"	0.50	1.12	0.09	2.13	0.25	0.34
MDDL4-1034HW	—		4 AWG	25	#10	3/4"	0.50	1.12	0.09	2.25	0.25	0.34
MDDL4-1458HW	MDDL4-1458H		4 AWG	25	1/4"	5/8"	0.50	1.12	0.09	2.22	0.25	0.34
MDDL4-1434HW	MDDL4-1434H		4 AWG	25	1/4"	3/4"	0.50	1.12	0.09	2.35	0.25	0.34

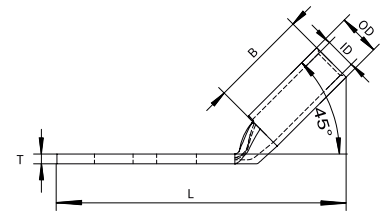
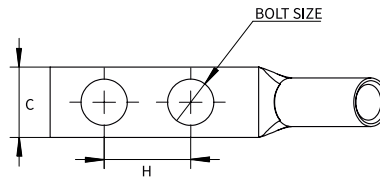
Two Hole Code Conductor Long Barrel, 45° Angle

One Hole
P1-5

- Two holes 45° grounding lug
- Long barrel
- Color-Coded for Easy Identification
- Used for Power and Grounding Applications

One Hole
45°
P6-8

One Hole
90°
P9-11



RoHS 

Two Hole
P12-18

Two Hole
45°
P19-24

Two Hole
90°
P25-30

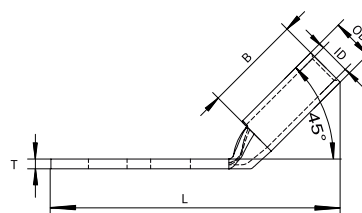
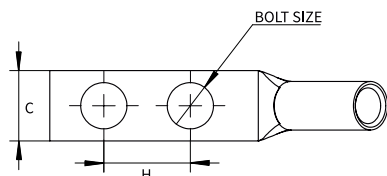
Four Hole
P31

Butt Splice
P32

Part No#		DIE COLOR	WIRE SIZE		BOLT SIZE	Hole Spacing H	Tang Width C	Barrel length B	Tang Thickness T	Over all length L	Inner diameter ID	Outer diameter OD
	No inspection window		STR	mm ²								
MDDL4-3801HW	MDDL4-3801H	GRAY	4 AWG	25	3/8	1	0.58	1.12	0.08	2.81	0.25	0.34
MDDL2-1058HW	—	BROWN	2 AWG	38	#10	5/8	0.60	1.25	0.11	2.24	0.31	0.42
MDDL2-1034HW	—				#10	3/4	0.60	1.25	0.11	2.36	0.31	0.42
MDDL2-1458HW	MDDL2-1458H				1/4	5/8	0.60	1.25	0.11	2.34	0.31	0.42
MDDL2-1434HW	MDDL2-1434H				1/4	3/4	0.60	1.25	0.11	2.47	0.31	0.42
MDDL2-1401HW	—				1/4	1	0.60	1.25	0.11	2.72	0.31	0.42
MDDL2-5658HW	—				5/16	5/8	0.60	1.25	0.11	2.59	0.31	0.42
—	MDDL2-5678H				5/16	7/8	0.60	1.25	0.11	2.79	0.31	0.42
MDDL2-5634HW	MDDL2-5634H				5/16	3/4	0.60	1.25	0.11	2.72"	0.31	0.42
MDDL2-3834HW	—				3/8	3/4	0.60	1.25	0.11	2.67	0.31	0.42
MDDL2-3878HW	—				3/8	7/8	0.60	1.25	0.11	2.79	0.31	0.42
MDDL2-3801HW	MDDL2-3801H				3/8	1	0.60	1.25	0.11	2.92	0.31	0.42
MDDL2-38UHW	MDDL2-38UH				3/8	3/4-1	0.60	1.25	0.11	2.92	0.31	0.42
MDDL2-3843HW	MDDL2-3843H	3/8	1-3/4	0.60	1.25	0.11	3.67	0.31	0.42			
MDDL2-1243HW	MDDL2-1243H	1/2	1-3/4	0.83	1.25	0.12	4.07	0.31	0.42			
MDDL1-1458HW	MDDL1-1458H	GREEN	1 AWG	50	1/4	5/8	0.67	1.38	0.10	2.46	0.36	0.46
MDDL1-1434HW	MDDL1-1434H				1/4	3/4	0.67	1.38	0.10	2.58	0.36	0.46
—	MDDL1-5678H				5/16	7/8	0.67	1.38	0.10	2.99	0.36	0.46
—	MDDL1-5601H				5/16	1	0.67	1.38	0.10	3.12	0.36	0.46
MDDL1-3801HW	MDDL1-3801H				3/8	1	0.67	1.38	0.10	3.04	0.36	0.46
MDDL1-1243HW	MDDL1-1243H				1/2	1-3/4	0.83	1.38	0.12	4.20	0.36	0.46
MDDL1/0-1458HW	MDDL1/0-1458H				1/4	5/8	0.75	1.38	0.12	2.64	0.39	0.52
MDDL1/0-1434HW	MDDL1/0-1434H				1/4	3/4	0.75	1.38	0.12	2.76	0.39	0.52
MDDL1/0-1401HW	—				1/4	1	0.75	1.38	0.12	3.02	0.39	0.52
—	MDDL1/0-5678H				5/16	7/8	0.75	1.38	0.12	2.99	0.39	0.52
—	MDDL1/0-5601H				5/16	1	0.75	1.38	0.12	3.12	0.39	0.52
MDDL1/0-3801HW	MDDL1/0-3801H				3/8	1	0.75	1.38	0.12	3.14	0.39	0.52
MDDL1/0-3843HW	MDDL1/0-1201H	3/8	1-3/4	0.75	1.38	0.12	3.89	0.39	0.52			

Two Hole Code Conductor Long Barrel, 45° Angle

- Two holes 45° grounding lug
- Long barrel
- Color-Coded for Easy Identification
- Used for Power and Grounding Applications



RoHS 

One Hole
P1-5

One Hole
45°
P6-8

One Hole
90°
P9-11

Two Hole
P12-18

Two Hole
45°
P19-24

Two Hole
90°
P25-30

Four Hole
P31

Butt Splice
P32

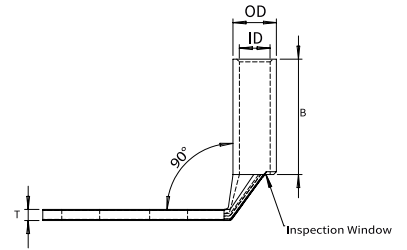
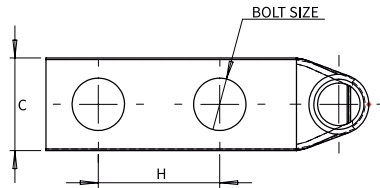
Part No#		DIE COLOR	WIRE SIZE		BOLT SIZE	Hole Spacing H	Tang Width C	Barrel length B	Tang Thickness T	Over all length L	Inner diameter ID	Outer diameter OD			
	No inspection window		STR	mm ²											
MDDL1/0-1243HW	MDDL1/0-1243H	PINK	1/0 AWG	60	1/2	1-3/4	0.83	1.38	0.11	4.32	0.39	0.52			
MDDL2/0-1458HW	MDDL2/0-1458H	BLACK	1/0 AWG	60	1/4	5/8	0.83	1.50	0.12	2.76	0.45	0.56			
MDDL2/0-1434HW	MDDL2/0-1434H				1/4	3/4	0.83	1.50	0.12	2.88	0.45	0.56			
MDDL2/0-1401HW	—				1/4	1	0.83	1.50	0.12	3.13	0.45	0.56			
—	MDDL2/0-5601H				5/16	1	0.83	1.50	0.12	3.24	0.45	0.56			
MDDL2/0-3801HW	MDDL2/0-3801H				3/8	1	0.83	1.50	0.12	3.20	0.45	0.56			
MDDL2/0-3843HW	—				3/8	1-3/4	0.83	1.50	0.12	3.95	0.45	0.56			
MDDL2/0-1201H	MDDL2/0-1201H				1/2	1	0.83	1.50	0.12	3.56	0.45	0.56			
MDDL2/0-1243HW	MDDL2/0-1243H				1/2	1-3/4	0.83	1.50	0.12	4.36	0.45	0.56			
MDDL3/0-1434HW	MDDL3/0-1434H				ORANGE	3/0 AWG	95	1/4	3/4	0.91	1.50	0.12	3.02	0.51	0.63
MDDL3/0-3801HW	MDDL3/0-3801H	3/8	1	0.91				1.50	0.12	3.33	0.51	0.63			
MDDL3/0-1201HW	MDDL3/0-1201H	1/2	1	0.91				1.50	0.13	3.58	0.51	0.63			
MDDL3/0-1243HW	MDDL3/0-1243H	1/2	1-3/4	0.91				1.50	0.13	4.50	0.51	0.63			
MDDL4/0-1458HW	—	PURPLE	4/0 AWG	120	1/4	5/8	1.02	1.62	0.14	2.88	0.55	0.69			
MDDL4/0-1434HW	MDDL4/0-1434H				1/4	3/4	1.02	1.62	0.14	3.04	0.55	0.69			
—	MDDL4/0-5601H				5/16	1	1.02	1.62	0.14	3.37	0.55	0.69			
MDDL4/0-3801HW	MDDL4/0-3801H				3/8	1	1.02	1.62	0.14	3.35	0.55	0.69			
MDDL4/0-3843HW	MDDL4/0-3843H				3/8	1-3/4	1.02	1.62	0.14	4.10	0.55	0.69			
—	MDDL4/0-1201H				1/2	1	1.02	1.62	0.14	3.67	0.55	0.69			
MDDL4/0-1243HW	MDDL4/0-1243H				1/2	1-3/4	1.02	1.62	0.14	4.48	0.55	0.69			
MDDL250-5601HW	—				YELLOW	250KCM	135	5/16	1	1.14	1.62	0.15	3.31	0.63	0.77
MDDL250-3801HW	MDDL250-3801H							3/8	1	1.14	1.62	0.15	3.38	0.63	0.77
MDDL250-1201HW	MDDL250-1201H	1/2	1	1.14				1.62	0.15	3.61	0.63	0.77			
MDDL250-1243HW	MDDL250-1243H	1/2	1-3/4	1.14				1.62	0.15	4.52	0.63	0.77			
MDDL500-3801HW	MDDL500-3801H	PINK	500 kcmil	240	3/8	1	1.55	2.25	0.23	4.29	0.84	1.06			
MDDL500-1243HW	MDDL500-1243H				1/2	1-3/4	1.55	2.25	0.23	5.46	0.84	1.06			
MDDL600-3801HW	MDDL600-3801H	GREEN	600 kcmil	300	3/8	1	1.70	2.69	0.26	4.47	0.92	1.19			
MDDL600-1243HW	MDDL600-1243H				1/2	1-3/4	1.70	2.69	0.26	5.65	0.92	1.19			

Two Hole Code Conductor Standard Barrel, 90° Angle

One Hole
P1-5

- Two holes 90° grounding lug
- Standard barrel
- Color-Coded for Easy Identification
- Used for Power and Grounding Applications

One Hole
45°
P6-8



One Hole
90°
P9-11

RoHS US

Two Hole
P12-18

Two Hole
45°
P19-24

Two Hole
90°
P25-30

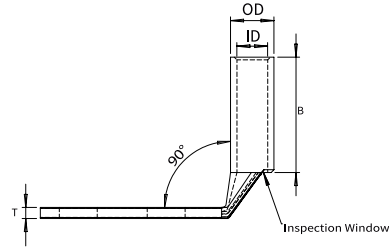
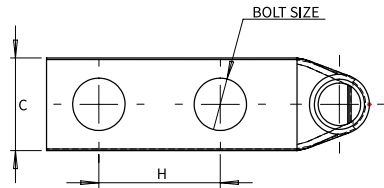
Four Hole
P31

Butt Splice
P32

Part No#	DIE COLOR	WIRE SIZE		BOLT SIZE	Hole Spacing H	Tang Width C	Barrel length B	Tang Thickness T	Over all length L	Inner diameter ID	Outer diameter OD
		STR	mm ²								
MDD1410-1058FW	YELLOW	14-10#	4-6	#10	5/8"	0.36"	0.38"	0.06"	1.47"	0.13	0.22
MDD1410-1401FW				1/4"	5/8"	0.41"	0.38"	0.05"	1.56"	0.13	0.22
MDD1410-3801FW				3/8"	1"	0.56"	0.38"	0.04"	2.16"	0.13	0.22
MDD8-1058FW	RED	8 AWG	10	#10	5/8"	0.41"	0.44"	0.08"	1.53	0.18	0.27
MDD8-1458FW				1/4"	5/8"	0.44"	0.44"	0.08"	1.62	0.18	0.27
MDD8-1434FW				1/4"	3/4"	0.44"	0.44"	0.08"	1.74	0.18	0.27
MDD8-1401FW				1/4"	1"	0.44"	0.44"	0.08"	1.99	0.18	0.27
MDD8-3801FW				3/8"	1"	0.58"	0.44"	0.06"	2.21	0.18	0.27
MDDS6-1058FW	BLUE	6 AWG	16	#10	5/8"	0.42"	0.54"	0.09"	1.57	0.2	0.29
MDDS6-1034FW				#10	3/4"	0.42"	0.54"	0.09"	1.69	0.2	0.29
MDDS6-1001FW				#10	1"	0.42"	0.54"	0.08"	1.94	0.2	0.29
MDDS6-1412FW				1/4"	1/2"	0.45"	0.54"	0.08"	1.60"	0.2	0.29
MDDS6-1458FW				1/4"	5/8"	0.45"	0.54"	0.08"	1.66	0.2	0.29
MDDS6-1434FW				1/4"	3/4"	0.45"	0.54"	0.08"	1.78	0.2	0.29
MDDS6-1401FW				1/4"	1"	0.45"	0.54"	0.08"	2.03	0.2	0.29
MDDS6-5634FW				5/16"	3/4"	0.52"	0.54"	0.07"	1.80"	0.2	0.29
MDDS6-5601FW				5/16"	1"	0.52"	0.54"	0.07"	2.15	0.2	0.29
MDD6-3801FW				3/8"	1"	0.58"	0.54"	0.06"	2.25	0.2	0.29
MDD6-1058FW				#10	5/8"	0.42"	0.81"	0.08"	1.57	0.2	0.29
MDD6-1034FW				#10	3/4"	0.42"	0.81"	0.08"	1.69	0.2	0.29
MDD6-1001FW				#10	1"	0.42"	0.81"	0.08"	1.94	0.2	0.29
MDD6-1458FW				1/4"	5/8"	0.45"	0.81"	0.08"	1.66	0.2	0.29
MDD6-1434FW	1/4"	3/4"	0.45"	0.81"	0.08"	1.78	0.2	0.29			
MDD6-1401FW	1/4"	1"	0.45"	0.81"	0.08"	2.03	0.2	0.29			
MDD6-5601FW	5/16"	1"	0.56"	0.81"	0.07"	2.15	0.2	0.29			
MDD6-3801FW	3/8"	1"	0.62"	0.81"	0.06"	2.25	0.2	0.29			
MDD4-1058FW	GRAY	4 AWG	25	#10	5/8"	0.50"	0.81"	0.09"	1.65	0.25	0.34

Two Hole Code Conductor Standard Barrel, 90° Angle

- Two holes 90° grounding lug
- Standard barrel
- Color-Coded for Easy Identification
- Used for Power and Grounding Applications



RoHS 

One Hole
P1-5

One Hole
45°
P6-8

One Hole
90°
P9-11

Two Hole
P12-18

Two Hole
45°
P19-24

Two Hole
90°
P25-30

Four Hole
P31

Butt Splice
P32

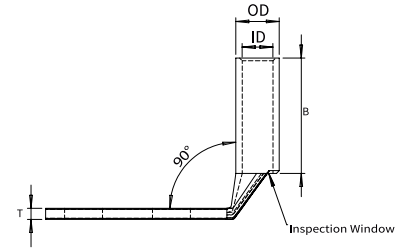
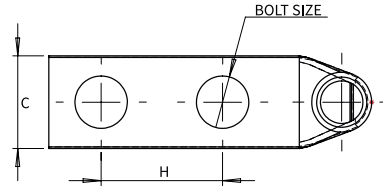
Part No#	DIE COLOR	WIRE SIZE		BOLT SIZE	Hole Spacing H	Tang Width C	Barrel length B	Tang Thickness T	Over all length L	Inner diameter ID	Outer diameter OD
		STR	mm ²								
MDD4-1034FW	GRAY	4 AWG	25	#10	3/4"	0.50"	0.81"	0.09"	1.78	0.25	0.34
MDD4-1458FW				1/4"	5/8"	0.50"	0.81"	0.09"	1.74	0.25	0.34
MDD4-1434FW				1/4"	3/4"	0.50"	0.81"	0.09"	1.87	0.25	0.34
MDD4-1401FW				1/4"	1"	0.50"	0.81"	0.09"	2.12	0.25	0.34
MDD4-5601FW				5/16"	1"	0.52"	0.81"	0.09"	2.14	0.25	0.34
MDD4-3801FW				3/8"	1"	0.58"	0.81"	0.08"	2.34"	0.25	0.34
MDD2-1458FW	BROWN	2 AWG	38	1/4"	5/8"	0.60"	0.88"	0.11"	1.86"	0.31	0.42
MDD2-1434FW				1/4"	3/4"	0.60"	0.88"	0.11"	1.99"	0.31	0.42
MDD2-1401FW				1/4"	1"	0.60"	0.88"	0.11"	2.24"	0.31	0.42
MDD2-5634FW				5/16"	3/4"	0.60"	0.88"	0.11"	2.11"	0.31	0.42
MDD2-3801FW				3/8"	1"	0.60"	0.88"	0.11"	2.47"	0.31	0.42
MDD2-1243FW				1/2"	1-3/4"	0.83"	0.88"	0.12"	3.61"	0.31	0.42
MDD1-1458FW	GREEN	1 AWG	50	1/4"	5/8"	0.68"	0.88"	0.10"	1.94"	0.36	0.46
MDD1-1434FW				1/4"	3/4"	0.68"	0.88"	0.10"	2.06"	0.36	0.46
MDD1-5678FW				5/16"	7/8"	0.68"	0.88"	0.10"	2.31"	0.36	0.46
MDD1-3801FW				3/8"	1"	0.68"	0.88"	0.10"	2.51"	0.36	0.46
MDD1-1243HW				1/2"	1-3/4"	0.83"	0.88"	0.12"	3.68"	0.36	0.46
MDD1/0-1458FW				1/4"	5/8"	0.75"	0.88"	0.12"	2.08"	0.39	0.52
MDD1/0-1434FW	PINK	1/0 AWG	60	1/4"	3/4"	0.75"	0.88"	0.12"	2.20"	0.39	0.52
MDD1/0-5678FW				5/16"	7/8"	0.75"	0.88"	0.12"	2.38"	0.39	0.52
MDD1/0-3801FW				3/8"	1"	0.75"	0.88"	0.12"	2.58"	0.39	0.52
MDD1/0-1243FW				1/2"	1-3/4"	0.83"	0.88"	0.11"	3.75"	0.39	0.52
MDD2/0-1458FW				1/4"	5/8"	0.83"	0.94"	0.12"	2.22"	0.45	0.56
MDD2/0-1434FW				1/4"	3/4"	0.83"	0.94"	0.12"	2.34"	0.45	0.56
MDD2/0-5678FW	BLACK			5/16"	7/8"	0.83"	0.94"	0.12"	2.47"	0.45	0.56
MDD2/0-3801FW				3/8"	1"	0.83"	0.94"	0.12"	2.66"	0.45	0.56
MDD2/0-1243FW				1/2"	1-3/4"	0.83"	0.94"	0.12"	3.82"	0.45	0.56

Two Hole Code Conductor Standard Barrel, 90° Angle

One Hole
P1-5

- Two holes 90° grounding lug
- Standard barre
- Color-Coded for Easy Identification
- Used for Power and Grounding Applications

One Hole
45°
P6-8



One Hole
90°
P9-11

RoHS

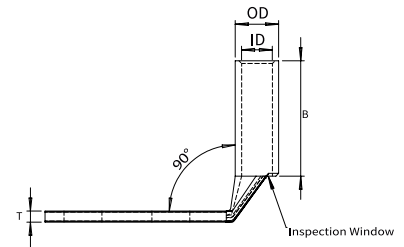
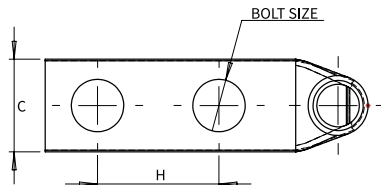
Two Hole
P12-18

Part No#	DIE COLOR	WIRE SIZE		BOLT SIZE	Hole Spacing H	Tang Width C	Barrel length B	Tang Thickness T	Over all length L	Inner diameter ID	Outer diameter OD
		STR	mm ²								
MDD3/0-1434FW	ORANGE	3/0 AWG	95	1/4"	3/4"	0.91"	1.00"	0.13"	2.4"	0.51	0.63
MDD3/0-3801FW				3/8"	1"	0.91"	1.00"	0.13"	2.70"	0.51	0.63
MDD3/0-1243FW				1/2"	1-3/4"	0.91"	1.00"	0.13"	3.80"	0.51	0.63
MDD4/0-1434FW	PURPLE	4/0 AWG	120	1/4"	3/4"	1.02"	1.19	0.14"	2.50"	0.55	0.69
MDD4/0-3801FW				3/8"	1"	1.02"	1.19	0.14"	2.84"	0.55	0.69
MDD4/0-1243FW				1/2"	1-3/4"	1.02"	1.19	0.14"	3.98	0.55	0.69
MDD250-3801FW	YELLOW	250KCM	135	3/8"	1"	1.14"	1.25"	0.15"	2.90"	0.625	0.77
MDD250-1243FW				1/2"	1-3/4"	1.14"	1.25"	0.15"	4.04"	0.625	0.77

Two Hole
45°
P19-24

Two Hole Code Conductor Standard Barrel Narrow Tongue, 90° Angle

Two Hole
90°
P25-30



Four Hole
P31

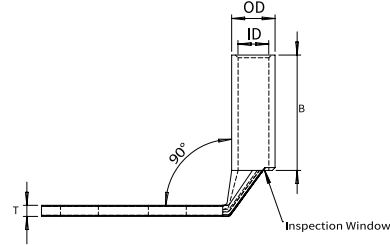
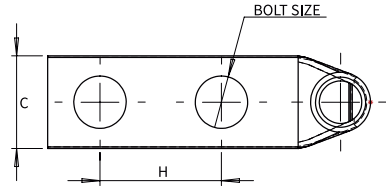
RoHS

Butt Splice
P32

Part No#	DIE COLOR	WIRE SIZE		BOLT SIZE	Hole Spacing H	Tang Width C	Barrel length B	Tang Thickness T	Over all length L	Inner diameter ID	Outer diameter OD
		STR	mm ²								
MDD2-1458FWNT	BROWN	2 AWG	38	1/4	5/8	0.48	0.88	0.11	1.86	0.31	0.42
MDD2-1401FWNT				1/4	1	0.48	0.88	0.11	2.24	0.31	0.42
MDD1/0-1401FWNT	PINK	1/0 AWG	60	1/4	1	0.48	0.88	0.12	2.45	0.39	0.52
MDD1/0-5601FWNT				5/16	1	0.48	0.88	0.12	2.51	0.39	0.52

Two Hole Code Conductor Standard Barrel, 90° Angle

- Two holes 90° grounding lug
- Standard barrel
- Color-Coded for Easy Identification
- Used for Power and Grounding Applications



RoHS 

One Hole
P1-5

One Hole
45°
P6-8

One Hole
90°
P9-11

Two Hole
P12-18

Two Hole
45°
P19-24

Two Hole
90°
P25-30

Four Hole
P31

Butt Splice
P32

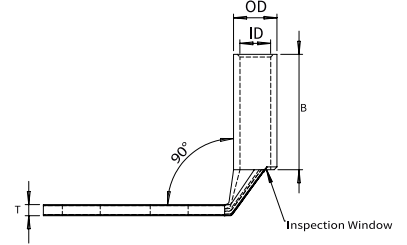
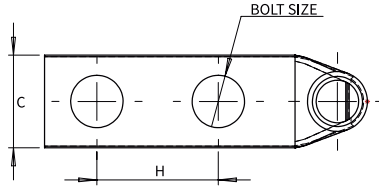
Part No#		DIE COLOR	WIRE SIZE		BOLT SIZE	Hole Spacing	Tang Width	Barrel length	Tang Thickness	Over all length	Inner diameter	Outer diameter			
	No inspection window		STR	mm ²		H	C	B	T	L	ID	OD			
MDDL1410-1458FW	—	YELLOW	14-10#	4-6	1/4	5/8	0.41	0.69	0.05	1.56	0.13	0.22			
MDDL1410-1434FW	—				1/4	3/4	0.41	0.69	0.05	1.69	0.13	0.22			
MDDL8-1058FW	MDDL8-1058F	RED	8 AWG	10	#10	5/8	0.41	0.81	0.08	1.53	0.18	0.27			
MDDL8-1034FW	—				#10	3/4	0.41	0.81	0.08	1.65	0.18	0.27			
MDDL8-1458FW	MDDL8-1458F				1/4	5/8	0.44	0.81	0.08	1.61	0.18	0.27			
MDDL8-1434FW	MDDL8-1434F				1/4	3/4	0.44	0.81	0.08	1.74	0.18	0.27			
MDDL8-1401FW	—				1/4	1	0.44	0.81	0.08	1.99	0.18	0.27			
MDDL8-3801FW	MDDL8-3801F				3/8	1	0.58	0.81	0.06	2.21	0.18	0.27			
MDDL6-1058FW	MDDL6-1058F	BLUE	6 AWG	16	#10	5/8	0.42	1.12	0.09	1.57	0.20	0.29			
MDDL6-1034FW	—				#10	3/4	0.42	1.12	0.09	1.69	0.20	0.29			
MDDL6-1412FW	—				1/4	1/2	0.45	1.12	0.08	1.53	0.20	0.29			
MDDL6-1458FW	MDDL6-1458F				1/4	5/8	0.45	1.12	0.08	1.66	0.20	0.29			
MDDL6-1434FW	MDDL6-1434F				1/4	3/4	0.45	1.12	0.08	1.66	0.20	0.29			
MDDL6-14UFW	—				1/4	1/2-5/8	0.45	1.12	0.08	1.78	0.20	0.29			
MDDL6-1401FW	MDDL6-1401F				1/4	1	0.45	1.12	0.08	2.03	0.20	0.29			
MDDL6-5634FW	—				5/16	3/4	0.56	1.12	0.08	2.28	0.20	0.29			
MDDL6-3834FW	—				3/8	3/4	0.58	1.12	0.06	1.90	0.20	0.29			
MDDL6-3878FW	—				3/8	7/8	0.58	1.12	0.06	2.00	0.20	0.29			
MDDL6-3801FW	MDDL6-3801F				3/8	1	0.58	1.12	0.06	2.13	0.20	0.29			
MDDL6-38UFW	—				3/8	3/4-1	0.58	1.12	0.06	2.25	0.20	0.29			
MDDL4-1058FW	—				GRAY	4 AWG	25	#10	5/8	0.50	1.12	0.09	1.65	0.25	0.34
MDDL4-1034FW	—							#10	3/4	0.50	1.12	0.09	1.78	0.25	0.34
MDDL4-1458FW	MDDL4-1458F	1/4	5/8	0.50				1.12	0.09	1.74	0.25	0.34			
MDDL4-1434FW	MDDL4-1434F	1/4	3/4	0.50				1.12	0.09	1.87	0.25	0.34			
MDDL4-3801FW	MDDL4-3801F	3/8	1	0.58				1.12	0.08	2.34	0.25	0.34			

Two Hole Code Conductor Long Barrel, 90° Angle

One Hole
P1-5

- Two holes 90° grounding lug
- Long barrel
- Color-Coded for Easy Identification
- Used for Power and Grounding Applications

One Hole
45°
P6-8



One Hole
90°
P9-11

RoHS US

Two Hole
P12-18

Two Hole
45°
P19-24

Two Hole
90°
P25-30

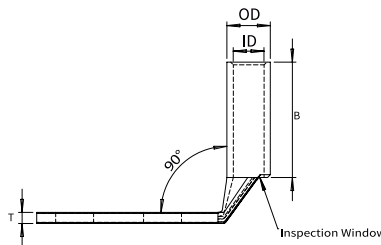
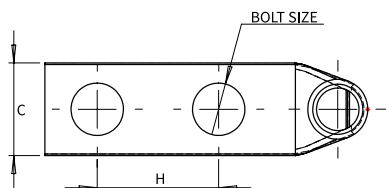
Four Hole
P31

Butt Splice
P32

Part No#		DIE COLOR	WIRE SIZE		BOLT SIZE	Hole Spacing H	Tang Width C	Barrel length B	Tang Thickness T	Over all length L	Inner diameter ID	Outer diameter OD
No inspection window	STR		mm ²									
MDDL2-1058FW	—	BROWN	2 AWG	38	#10	5/8	0.60	1.25	0.11	1.76	0.31	0.42
MDDL2-1034FW	—				#10	3/4	0.60	1.25	0.11	1.89	0.31	0.42
MDDL2-1458FW	MDDL2-1458F				1/4	5/8	0.60	1.25	0.11	1.86	0.31	0.42
MDDL2-1434FW	MDDL2-1434F				1/4	3/4	0.60	1.25	0.11	1.99	0.31	0.42
MDDL2-1401FW	—				1/4	1	0.60	1.25	0.11	2.24	0.31	0.42
MDDL2-5658FW	—				5/16	5/8	0.60	1.25	0.11	2.11	0.31	0.42
MDDL2-5634FW	MDDL2-5634F				5/16	3/4	0.60	1.25	0.11	2.24"	0.31	0.42
MDDL2-5678F	MDDL2-5678F				5/16	7/8	0.60	1.25	0.11	2.24	0.31	0.42
MDDL2-3834FW	—				3/8	3/4	0.60	1.25	0.11	2.19	0.31	0.42
MDDL2-3878FW	—				3/8	7/8	0.60	1.25	0.11	2.31	0.31	0.42
MDDL2-3801FW	MDDL2-3801F				3/8	1	0.60	1.25	0.11	2.44	0.31	0.42
MDDL2-38UFW	MDDL2-38UF				3/8	3/4-1	0.60	1.25	0.11	2.44	0.31	0.42
MDDL2-3843FW	MDDL2-3843F	3/8	1-3/4	0.60	1.25	0.11	3.19	0.31	0.42			
MDDL2-1243FW	MDDL2-1243H	1/2	1-3/4	0.83	1.25	0.12	3.61	0.31	0.42			
MDDL1-1458FW	MDDL1-1458F	GREEN	1 AWG	50	1/4	5/8	0.67	1.38	0.10	1.94	0.36	0.46
MDDL1-1434FW	MDDL1-1434F				1/4	3/4	0.67	1.38	0.10	2.06	0.36	0.46
—	MDDL1-5678F				5/16	7/8	0.67	1.38	0.10	2.19	0.36	0.46
—	MDDL1-5601F				5/16	1	0.67	1.38	0.10	2.31	0.36	0.46
MDDL1-3801FW	MDDL1-3801F				3/8	1	0.67	1.38	0.10	2.51	0.36	0.46
MDDL1-1243FW	MDDL1-1243F				1/2	1-3/4	0.83	1.38	0.12	3.68	0.36	0.46
MDDL1/0-1458FW	MDDL1/0-1458F	PINK	1/0 AWG	60	1/4	5/8	0.75	1.38	0.12	2.08	0.39	0.52
MDDL1/0-1434FW	MDDL1/0-1434F				1/4	3/4	0.75	1.38	0.12	2.20	0.39	0.52
MDDL1/0-1401FW	—				1/4	1	0.75	1.38	0.12	2.45	0.39	0.52
—	MDDL1/0-5678F				5/16	7/8	0.75	1.38	0.12	2.38	0.39	0.52
—	MDDL1/0-5601F				5/16	1	0.75	1.38	0.12	2.51	0.39	0.52
MDDL1/0-3801FW	MDDL1/0-3801F				3/8	1	0.75	1.38	0.12	2.58	0.39	0.52
MDDL1/0-3843FW	—	3/8	1-3/4	0.75	1.38	0.12	3.33	0.39	0.52			

Two Hole Code Conductor Long Barrel, 90° Angle

- Two holes 90° grounding lug
- Long barrel
- Color-Coded for Easy Identification
- Used for Power and Grounding Applications



RoHS US

One Hole
P1-5

One Hole
45°
P6-8

One Hole
90°
P9-11

Two Hole
P12-18

Two Hole
45°
P19-24

Two Hole
90°
P25-30

Four Hole
P31

Butt Splice
P32

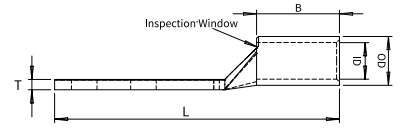
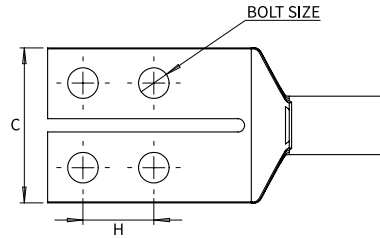
Part No#		DIE COLOR	WIRE SIZE		BOLT SIZE	Hole Spacing H	Tang Width C	Barrel length B	Tang Thickness T	Over all length L	Inner diameter ID	Outer diameter OD
	No inspection window		STR	mm ²								
—	MDDL1/0-1201F	PINK	1/0 AWG	60	1/2	1	0.83	1.38	0.11	2.85	0.39	0.52
MDDL1/0-1243FW	MDDL1/0-1243F				1/2	1-3/4	0.83	1.38	0.11	3.75	0.39	0.52
MDDL2/0-1458FW	MDDL2/0-1458F	BLACK			1/4	5/8	0.83	1.50	0.12	2.22	0.45	0.56
MDDL2/0-1434FW	MDDL2/0-1434F				1/4	3/4	0.83	1.50	0.12	2.34	0.45	0.56
MDDL2/0-1401FW	MDDL2/0-5601F				5/16	1	0.83	1.50	0.12	2.59	0.45	0.56
MDDL2/0-3801FW	MDDL2/0-3801F				3/8	1	0.83	1.50	0.12	2.66	0.45	0.56
MDDL2/0-3843FW	MDDL2/0-1201F				1/2	1	0.83	1.50	0.12	2.91	0.45	0.56
MDDL2/0-1243FW	MDDL2/0-1243F				1/2	1-3/4	0.83	1.50	0.12	3.82	0.45	0.56
MDDL3/0-1434FW	MDDL3/0-1434F	ORANGE	3/0 AWG	95	1/4	3/4	0.91	1.50	0.12	2.42	0.51	0.63
MDDL3/0-3801FW	MDDL3/0-3801F				3/8	1	0.91	1.50	0.12	2.73	0.51	0.63
MDDL3/0-1201FW	MDDL3/0-1201F				1/2	1	0.91	1.50	0.13	2.98	0.51	0.63
MDDL3/0-1243FW	MDDL3/0-1243F				1/2	1-3/4	0.91	1.50	0.13	3.89	0.51	0.63
MDDL4/0-1458FW	—	PURPLE			1/4	5/8	1.02	1.62	0.14	2.38	0.55	0.69
MDDL4/0-1434FW	MDDL4/0-1434F				1/4	3/4	1.02	1.62	0.14	2.50	0.55	0.69
—	MDDL4/0-5601F				5/16	1	1.02	1.62	0.14	2.77	0.55	0.69
MDDL4/0-3801FW	MDDL4/0-3801F				3/8	1	1.02	1.62	0.14	2.84	0.55	0.69
MDDL4/0-3843FW	MDDL4/0-3843F				3/8	1-3/4	1.02	1.62	0.14	3.59	0.55	0.69
—	MDDL4/0-1201F				1/2	1	1.02	1.62	0.14	3.07	0.55	0.69
MDDL4/0-1243FW	MDDL4/0-1243F				1/2	1-3/4	1.02	1.62	0.14	3.98	0.55	0.69
MDDL250-5601FW	—				YELLOW	250KCM	135	5/16	1	1.14	1.62	0.15
MDDL250-3801FW	MDDL250-3801F	3/8	1	1.14				1.62	0.15	2.90	0.63	0.77
MDDL250-1201FW	MDDL250-1201F	1/2	1	1.14				1.62	0.15	3.13	0.63	0.77
MDDL250-1243FW	MDDL250-1243F	1/2	1-3/4	1.14				1.62	0.15	4.04	0.63	0.77
MDDL500-3801FW	MDDL500-3801F	PINK	500 kcmil	240	3/8	1	1.55	2.25	0.23	3.13	0.84	1.06
MDDL500-1243FW	MDDL500-1243F				1/2	1-3/4	1.55	2.25	0.23	4.31	0.84	1.06
MDDL600-3801FW	MDDL600-3801F	GREEN	600 kcmil	300	3/8	1	1.70	2.69	0.26	3.26	0.92	1.19
MDDL600-1243FW	MDDL600-1243F				1/2	1-3/4	1.70	2.69	0.26	4.44	0.92	1.19

Four Hole Code Conductor Standard Barrel

One Hole
P1-5

- Four holes grounding lug
- Standard barrel
- Color-Coded for Easy Identification
- Used for Power and Grounding Applications

One Hole
45°
P6-8



One Hole
90°
P9-11

RoHS  US

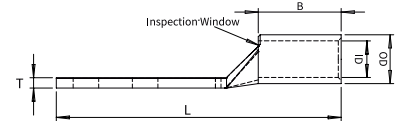
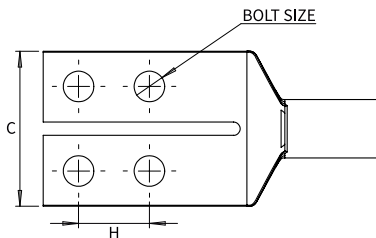
Two Hole
P12-18

Part No#	DIE COLOR	WIRE SIZE		BOLT SIZE	Hole Spacing H	Tang Width C	Barrel length B	Tang Thickness T	Over all length L	Inner diameter ID	Outer diameter OD
		STR	mm ²								
MDF1/0-1458W	PINK	1/0AWG	60	1/4	5/8	1.38	0.88	0.21	3.05	0.39	0.51
MDF2/0-1458W	BLACK	2/0AWG	70	1/4	5/8	1.38	0.94	0.21	3.15	0.45	0.58
MDF3/0-1458W	ORANGE	3/0AWG	95	1/4	5/8	1.38	1.00	0.21	3.25	0.51	0.63
MDF4/0-1458W	PURPLE	4/0AWG	120	1/4	5/8	1.38	1.00	0.21	3.29	0.55	0.69

Two Hole
45°
P19-24

Four Hole Code Conductor Long Standard Barrel

Two Hole
90°
P25-30



RoHS  US

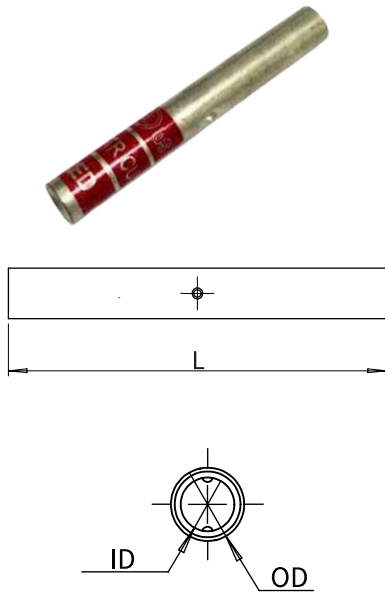
Four Hole
P31

Part No#	DIE COLOR	WIRE SIZE		BOLT SIZE	Hole Spacing H	Tang Width C	Barrel length B	Tang Thickness T	Over all length L	Inner diameter ID	Outer diameter OD
		STR	mm ²								
MDFL1/0-14UW	PINK	1/0AWG	60	1/4	5/8-3/4	1.38	1.38	0.11	3.55	0.39	0.51
MDFL1/0-38UW				3/8	1-1-1/8	1.63	1.38	0.11	3.93	0.39	0.51
MDFL2/0-14UW	BLACK	2/0AWG	70	1/4	5/8-3/4	1.38	1.50	0.21	3.71	0.45	0.58
MDFL2/0-38UW				3/8	1-1-1/8	1.63	1.50	0.21	4.09	0.45	0.58
MDFL4/0-14UW	PURPLE	4/0AWG	120	1/4	5/8-3/4	1.38	1.62	0.21	3.91	0.55	0.69

Butt Splice
P32

Code Conductor, Long Barrel, Butt Splice

- Code conductor butt splice grounding lug
- Long barrel
- Color-Coded for Easy Identification
- Used for Power and Grounding Applications



cUL US RoHS

Part No#	DIE COLOR	WIRE SIZE		Over all length L	Inner diameter ID	Outer diameter OD
		STR	mm ²			
MD8STR	RED	8AWG	10	2.0	0.18	0.27
MD6STR	BLUE	6AWG	16	2.29	0.22	0.31
MD4STR	GRAY	4AWG	25	2.86	0.28	0.38
MD2STR	BROWN	2AWG	38	2.99	0.31	0.42
MD1STR	GREEN	1AWG	50	3.07	0.36	0.47
MD1/0STR	PINK	1/0AWG	60	3.08	0.39	0.52
MD2/0STR	BLACK	2/0AWG	70	3.3	0.45	0.58
MD4/0STR	PURPLE	4/0AWG	120	3.57	0.55	0.71

One Hole
P1-5

One Hole
45°
P6-8

One Hole
90°
P9-11

Two Hole
P12-18

Two Hole
45°
P19-24

Two Hole
90°
P25-30

Four Hole
P31

Butt Splice
P32



Fax Order/
Request for Quote Form

Purchase Order #: _____

Date: _____

Request for Quote? Yes No _____

Date Materials Needed: _____

Customer Name: _____

Requested By: _____

Billing Address: _____

City: _____ State: _____ Zip _____

Shipping Address: _____

Attention: _____

City: _____ State: _____ Zip _____

Job Name _____

Part Number#	Description	Qty

Authorized Signature: _____

Date: _____

MAXDAO

Maxdao Limited

33 Hailing Industrial Zone

Taizhou, Jiangsu 225300

China

Phone: + 86 186 5260 9353

www.maxdao.com

Follow us on LinkedIn

www.linkedin.com/company/maxdao