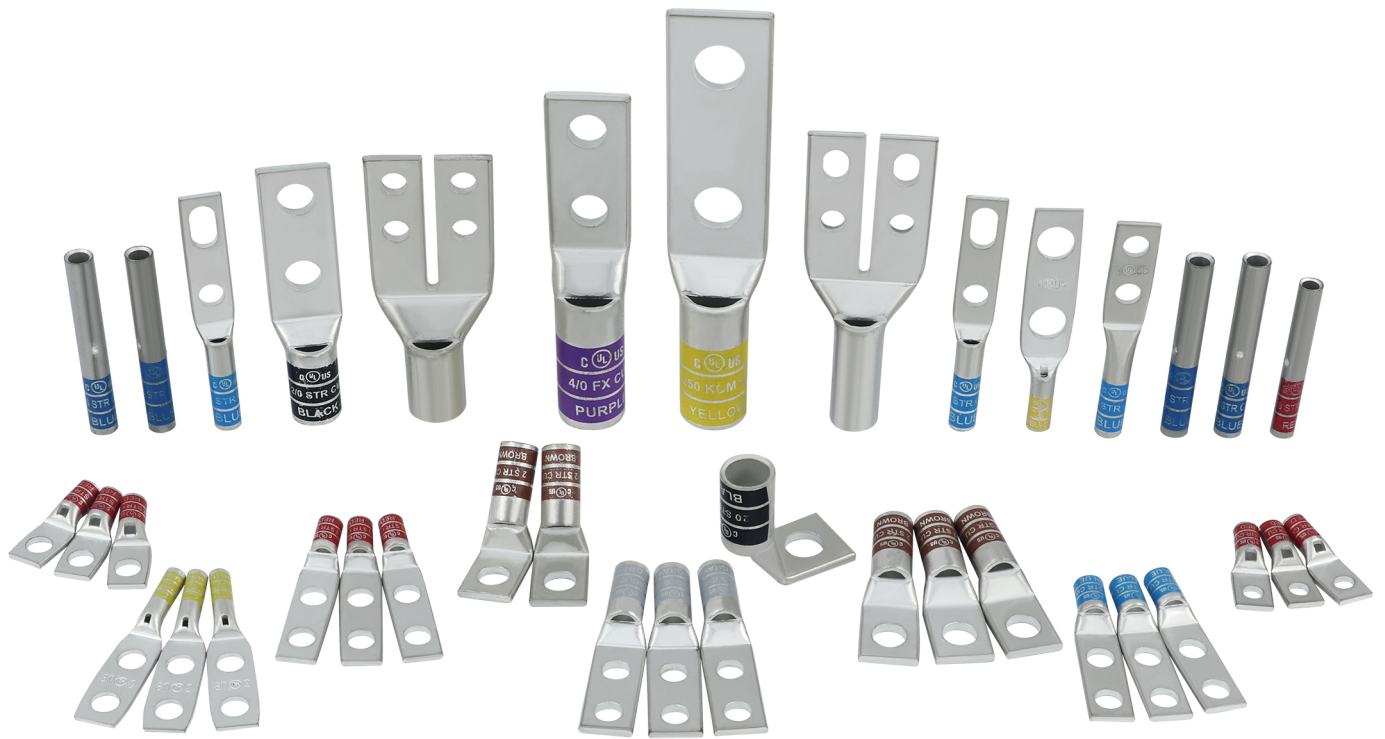


MAXDAO



CATALOG

Manufacturer of Grounding Lug

One Hole Lugs, Two Hole Lugs, Four Hole Lugs, Butt Splice

We make a variety of terminals grounding lugs
For your different needs for size, we support customization
Our company has a UL certificate to ensure our professionalism

Build A Better World

Maxdao designs and manufactures telecom & electrical components to build a better world.



Jiangsu Maxdao Technology Limited

33 Hailing Industrial Zone
Taizhou, Jiangsu 225300
China
Tel: +86 523 86085528

Maxdao Inc

2532 Summit Ave #506, Plano, TX 75074, USA
Tel: +1 469 3040359



Team Photo: Celebration of 10 years



R&D Office



3D Printer



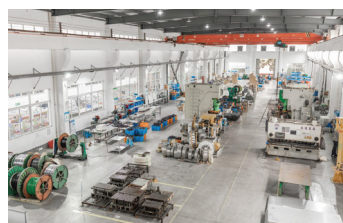
Tooling Workshop



Salt Spray Test



Pulling Test



Production Line



Automatic Pressing Machine



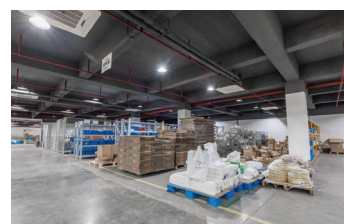
Automatic Cable Cutting & Stripping Machine



CNC



Automatic Wire Cutting Machine



Temperature & Humidity Controlled Warehouse

CERTIFICATE OF COMPLIANCE

Certificate Number UL-US-2002734-0
Report Reference E486663-20200901
Date 25-Sep-2020

Issued to: Jiangsu Maxdao Technology Limited
Building 33 No.66.Meilan East Road
Hailing Industrial Park Taizhou , Jiangsu,
China 225300

This is to certify that representative samples of ZMVV - Wire Connectors and Soldering Lugs
See Addendum Page for Product Designation(s).

Have been investigated by UL in accordance with the Standard(s) indicated on this Certificate.

Standard(s) for Safety: UL 486A-486B, 3rd Ed., Issue Date: 2018-04-27, Revision Date: 2019-12-16

Additional Information: See the UL Online Certifications Directory at <https://iq.ulprospector.com> for additional information

This Certificate of Compliance does not provide authorization to apply the UL Mark. Only the UL Follow-Up Services Procedure provides authorization to apply the UL Mark.

Only those products bearing the UL Mark should be considered as being UL Certified and covered under UL's Follow-Up Services.

Look for the UL Certification Mark on the product.



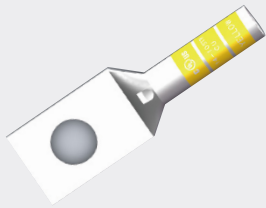
Bruce Mahrenholz, Director North American Certification Program

UL LLC

Any information and documentation involving UL Mark services are provided on behalf of UL LLC (UL) or any authorized licensee of UL. For questions, please contact a local UL Customer Service Representative at <http://ul.com/aboutul/locations/>



Table of contents



P1-3 Lugs for 14-10# Cable



P4-7 Lugs for 8AWG Cable



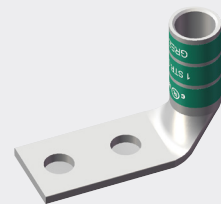
P8-13 Lugs for 6AWG Cable



P14-17 Lugs for 4AWG Cable



P18-22 Lugs for 2AWG Cable



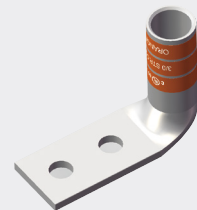
P23-26 Lugs for 1AWG Cable



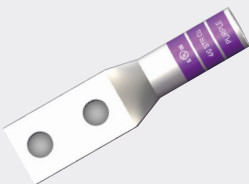
P27-30 Lugs for 1/0AWG Cable



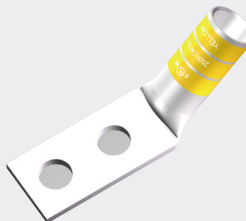
P31-34 Lugs for 2/0AWG Cable



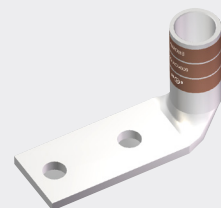
P35-37 Lugs for 3/0AWG Cable



P38-41 Lugs for 4/0AWG Cable



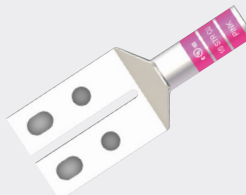
P42-44 Lugs for 250KCM Cable



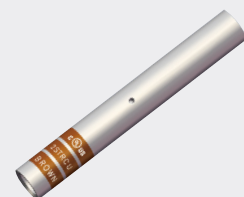
P45-46 Lugs for 500KCM Cable



P47-48 Lugs for 600KCM Cable



P49 Four Hole Lugs



P50 Butt Splice

Code Conductor, For 14-10# Cable

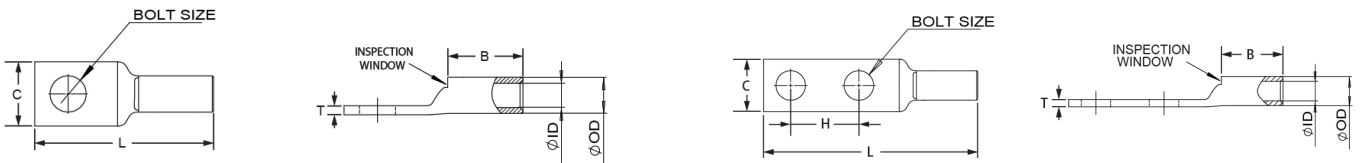
- Cable lugs are connecting devices used primarily for terminating and joining cable and wire conductors in electrical installations and equipment.
- These lugs are used for severe-duty applications and have thicker walls for greater strength and conductivity.
- Suitable for various copper cable and wire types, as long as the correct size is selected and the relevant "crimping" method is used.
- Manufactured from high conductivity copper which is tin plated to prevent corrosion.
- Easy to use in conjunction with mechanical or hydraulic crimping equipment.
- Color-Coded for Easy Identification.



Specifications

Material	Copper	Tongue Angle	Straight, 45°, 90°
Finish/Coating	Tin-Plated, Nickel-Plated	Barrel Type	Standard, Long, With or Without Inspection Window
Wire Range	14-10#	Tongue Type	Standard, Narrow
Color Code	Yellow	Certification	UL, RoHS, ISO9001
Bolt Size	1/4, 5/16, 3/8, 1/2, #6, #8, #10	Customizable	Yes

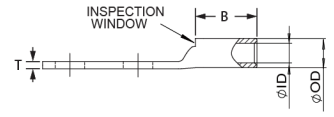
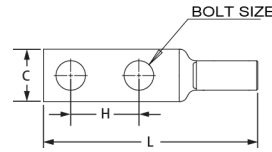
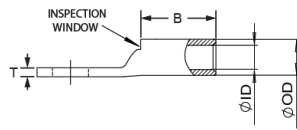
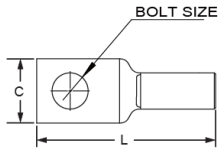
14-10# Grounding Lug/Yellow Printed/Straight Type



ITEM #	Part No#	BOLT SIZE	Holes	Hole Spacing	Tang Width	Barrel length	Tang Thickness	Over all length	Inner diameter	Outer diameter
			QTY	H (inch)	C (inch)	B (inch)	T (inch)	L (inch)	ID (inch)	OD (inch)
1	MD1410-10W	#8-#10	1	/	0.38	0.38	0.06	0.97	0.13	0.22
2	MD1410-14W	1/4	1	/	0.45	0.39	0.05	1.13	0.13	0.22
3	MD1410-56W	5/16	1	/	0.45	0.41	0.05	1.10	0.13	0.22
4	MD1410-38W	3/8	1	/	0.55	0.45	0.04	1.17	0.13	0.22
5	MDL1410-14W	1/4	1	/	0.41	0.69	0.05	1.52	0.13	0.22

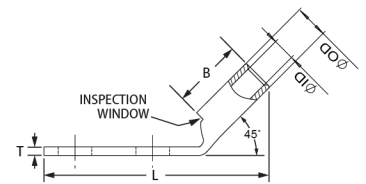
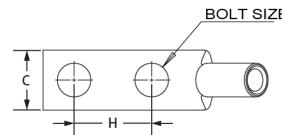
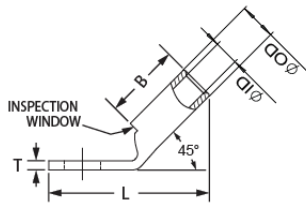
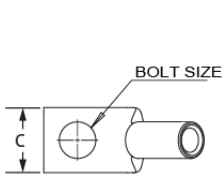
ITEM #	Part No#	BOLT SIZE	Holes	Hole Spacing	Tang Width	Barrel length	Tang Thickness	Over all length	Inner diameter	Outer diameter
			QTY	H (inch)	C (inch)	B (inch)	T (inch)	L (inch)	ID (inch)	OD (inch)
1	MDD1410-1058W	#10	2	5/8	0.36	0.38	0.06	1.72	0.13	0.22

Notice: Any dimension difference, please contact us to confirm.



ITEM #	Part No#	BOLT SIZE	Holes	Hole Spacing	Tang Width	Barrel length	Tang Thickness	Over all length	Inner diameter	Outer diameter
			QTY	H (inch)	C (inch)	B (inch)	T (inch)	L (inch)	ID (inch)	OD (inch)
2	MDD1410-1458W	1/4	2	5/8	0.41	0.38	0.05	1.84	0.13	0.22
3	MDD1410-1434W	1/4	2	3/4	0.41	0.38	0.05	1.97	0.13	0.22
4	MDD1410-1401W	1/4	2	1	0.41	0.38	0.05	2.22	0.13	0.22
5	MDD1410-3801W	3/8	2	1	0.56	0.38	0.04	2.40	0.13	0.22
6	MDDL1410-1458/W	1/4	2	5/8	0.41	0.69	0.05	2.16	0.13	0.22
7	MDDL1410-1401/W	1/4	2	1	0.41	0.69	0.05	2.53	0.13	0.22
8	MDDL1410-1434/W	1/4	2	3/4	0.41	0.69	0.05	2.28	0.13	0.22
9	MDDL1410-3801/W	3/8	2	1	0.61	0.69	0.05	2.72	0.13	0.22

14-10# Grounding Lug/Yellow Printed/45° Angle

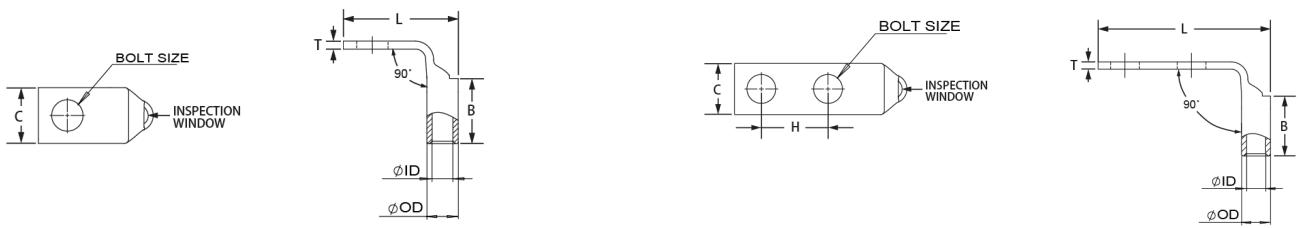


ITEM #	Part No#	BOLT SIZE	Holes	Hole Spacing	Tang Width	Barrel length	Tang Thickness	Over all length	Inner diameter	Outer diameter
			QTY	H (inch)	C (inch)	B (inch)	T (inch)	L (inch)	ID (inch)	OD (inch)
1	MDL1410-14HW	1/4	1	/	0.41	0.69	0.05	1.18	0.13	0.22

ITEM #	Part No#	BOLT SIZE	Holes	Hole Spacing	Tang Width	Barrel length	Tang Thickness	Over all length	Inner diameter	Outer diameter
			QTY	H (inch)	C (inch)	B (inch)	T (inch)	L (inch)	ID (inch)	OD (inch)
1	MDD1410-1058HW	#10	2	5/8	0.36	0.38	0.06	1.59	0.13	0.22
2	MDD1410-1458HW	1/4	2	5/8	0.41	0.38	0.05	1.67	0.13	0.22
3	MDD1410-1434HW	1/4	2	3/4	0.41	0.38	0.05	1.79	0.13	0.22
4	MDD1410-1401HW	1/4	2	1	0.41	0.38	0.05	2.04	0.13	0.22
5	MDD1410-3801HW	3/8	2	1	0.56	0.38	0.04	2.28	0.13	0.22
6	MDDL1410-1458HW	1/4	2	5/8	0.41	0.69	0.05	1.82	0.13	0.22
7	MDDL1410-1434HW	1/4	2	3/4	0.41	0.69	0.05	1.94	0.13	0.22

Notice: Any dimension difference, please contact us to confirm.

14-10# Grounding Lug/Yellow Printed/90° Angle



ITEM #	Part No#	BOLT SIZE	Holes	Hole Spacing	Tang Width	Barrel length	Tang Thickness	Over all length	Inner diameter	Outer diameter
			QTY	H (inch)	C (inch)	B (inch)	T (inch)	L (inch)	ID (inch)	OD (inch)
1	MDS1410-14FW	1/4	1	/	0.42	0.38	0.05	0.94	0.13	0.22
2	MDL1410-14FW	1/4	1	/	0.41	0.69	0.05	0.94	0.13	0.22

ITEM #	Part No#	BOLT SIZE	Holes	Hole Spacing	Tang Width	Barrel length	Tang Thickness	Over all length	Inner diameter	Outer diameter
			QTY	H (inch)	C (inch)	B (inch)	T (inch)	L (inch)	ID (inch)	OD (inch)
1	MDD1410-1058FW	#10	2	5/8	0.36	0.38	0.06	1.47	0.13	0.22
2	MDD1410-1458FW	1/4	2	5/8	0.41	0.38	0.05	1.56	0.13	0.22
3	MDD1410-3801FW	3/8	2	1	0.56	0.38	0.04	2.16	0.13	0.22
4	MDDL1410-1458FW	1/4	2	5/8	0.41	0.69	0.05	1.56	0.13	0.22
5	MDDL1410-1434FW	1/4	2	3/4	0.41	0.69	0.05	1.69	0.13	0.22

Notice: Any dimension difference, please contact us to confirm.

Code Conductor, For 8 AWG Cable

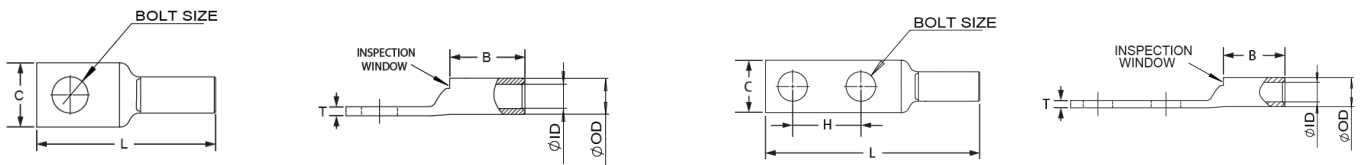
- Cable lugs are connecting devices used primarily for terminating and joining cable and wire conductors in electrical installations and equipment.
- These lugs are used for severe-duty applications and have thicker walls for greater strength and conductivity.
- Suitable for various copper cable and wire types, as long as the correct size is selected and the relevant "crimping" method is used.
- Manufactured from high conductivity copper which is tin plated to prevent corrosion.
- Easy to use in conjunction with mechanical or hydraulic crimping equipment.
- Color-Coded for Easy Identification.



Specifications

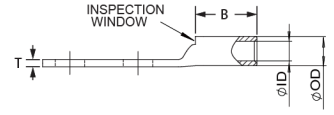
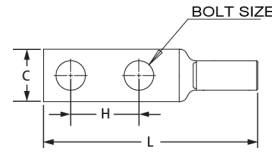
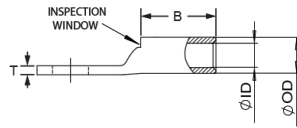
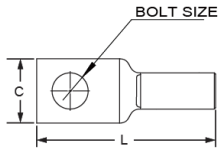
Material	Copper	Tongue Angle	Straight, 45°, 90°
Finish/Coating	Tin-Plated, Nickel-Plated	Barrel Type	Standard, Long, With or Without Inspection Window
Wire Range	8 AWG	Tongue Type	Standard, Narrow
Color Code	Red	Certification	UL, RoHS, ISO9001
Bolt Size	1/4, 5/16, 3/8, 1/2, #6, #8, #10	Customizable	Yes

8 AWG Grounding Lug/Red Printed/Straight Type



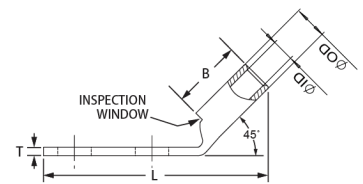
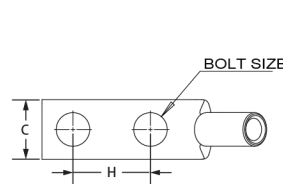
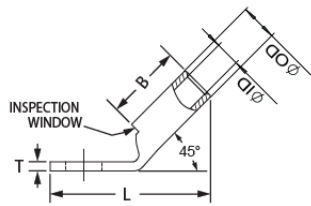
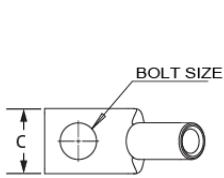
ITEM #	Part No#	BOLT SIZE	Holes	Hole Spacing	Tang Width	Barrel length	Tang Thickness	Over all length	Inner diameter	Outer diameter
			QTY	H (inch)	C (inch)	B (inch)	T (inch)	L (inch)	ID (inch)	OD (inch)
1	MDS8-10W	#8-#10	1	/	0.41	0.44	0.08	1.16	0.18	0.27
2	MDS8-14W	1/4	1	/	0.44	0.44	0.08	1.26	0.18	0.27
3	MDS8-56W	5/16	1	/	0.52	0.44	0.06	1.38	0.18	0.27
4	MDS8-38W	3/8	1	/	0.58	0.44	0.06	1.51	0.18	0.27
5	MDS8-12W	1/2	1	/	0.71	0.44	0.05	1.76	0.18	0.27
6	MD8-06WNT	#6	1	/	0.29	0.44	0.09	1.08	0.18	0.27
7	MD8-08WNT	#8	1	/	0.33	0.44	0.09	1.18	0.18	0.27
8	MDL8-10/W	#10	1	/	0.41	0.75	0.08	1.43	0.18	0.27
9	MDL8-14/W	1/4	1	/	0.44	0.75	0.08	1.56	0.18	0.27
10	MDL8-38/W	3/8	1	/	0.58	0.75	0.06	1.75	0.18	0.27
11	MD8-10HW	#8-#10	1	/	0.41	0.44	0.08	1.00	0.18	0.27

Notice: Any dimension difference, please contact us to confirm.



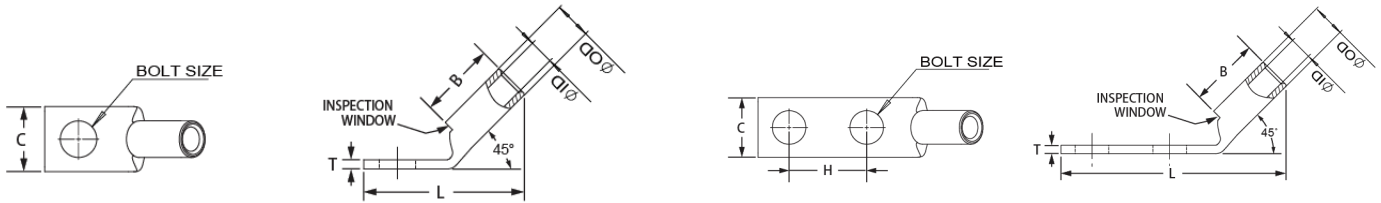
ITEM #	Part No#	BOLT SIZE	Holes	Hole Spacing	Tang Width	Barrel length	Tang Thickness	Over all length	Inner diameter	Outer diameter
			QTY	H (inch)	C (inch)	B (inch)	T (inch)	L (inch)	ID (inch)	OD (inch)
1	MDD8-1058W	#10	2	5/8	0.41	0.44	0.08	1.85	0.18	0.27
2	MDD8-1034W	#10	2	3/4	0.41	0.44	0.08	1.95	0.18	0.27
3	MDD8-1458W	1/4	2	5/8	0.44	0.44	0.08	1.95	0.18	0.27
4	MDD8-1434W	1/4	2	3/4	0.44	0.44	0.08	2.08	0.18	0.27
5	MDD8-1401W	1/4	2	1	0.44	0.44	0.08	2.33	0.18	0.27
6	MDD8-3801W	3/8	2	1	0.58	0.44	0.06	2.52	0.18	0.27
7	MDD8-1243W	1/2	2	1-3/4	0.83	0.44	0.12	3.75	0.18	0.27
8	MDDL8-1058/W	#10	2	5/8	0.44	1.00	0.08	2.46	0.18	0.27
9	MDDL8-1034/W	#10	2	3/4	0.44	0.81	0.08	2.19	0.18	0.27
10	MDDL8-1458/W	1/4	2	5/8	0.44	0.81	0.08	2.19	0.18	0.27
11	MDDL8-1434/W	1/4	2	3/4	0.44	0.81	0.08	2.32	0.18	0.27
12	MDDL8-1401/W	1/4	2	1	0.44	0.81	0.08	2.57	0.18	0.27
13	MDDL8-3801/W	3/8	2	1	0.58	0.81	0.06	2.76	0.18	0.27
14	MDDL8-10U/W	#10	2	5/8-3/4	0.44	0.81	0.08	2.21	0.18	0.27
15	MDDL8-14U/W	1/4	2	5/8-3/4	0.44	0.81	0.08	2.32	0.18	0.27

8 AWG Grounding Lug/Red Printed/45° Angle



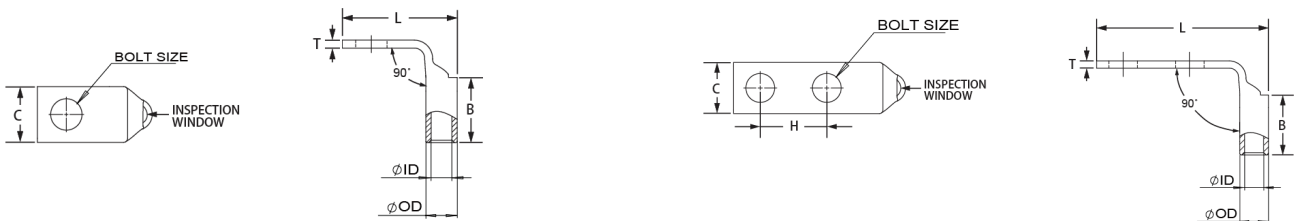
ITEM #	Part No#	BOLT SIZE	Holes	Hole Spacing	Tang Width	Barrel length	Tang Thickness	Over all length	Inner diameter	Outer diameter
			QTY	H (inch)	C (inch)	B (inch)	T (inch)	L (inch)	ID (inch)	OD (inch)
1	MD8-14HW	1/4	1	/	0.44	0.44	0.08	1.09	0.18	0.27
2	MD8-56HW	5/16	1	/	0.52	0.52	0.06	1.20	0.18	0.27
3	MD8-38HW	3/8	1	/	0.58	0.58	0.06	1.30	0.18	0.27
4	MDL8-10H/W	#10	1	/	0.41	0.41	0.08	1.32	0.18	0.27
5	MDL8-14H/W	1/4	1	/	0.44	0.44	0.08	1.40	0.18	0.27

Notice: Any dimension difference, please contact us to confirm.



ITEM #	Part No#	BOLT SIZE	Holes	Hole Spacing	Tang Width	Barrel length	Tang Thickness	Over all length	Inner diameter	Outer diameter
			QTY	H (inch)	C (inch)	B (inch)	T (inch)	L (inch)	ID (inch)	OD (inch)
1	MDD8-1058HW	#10	2	5/8	0.41	0.44	0.08	1.70	0.18	0.27
2	MDD8-1458HW	1/4	2	5/8	0.44	0.44	0.08	1.79	0.18	0.27
3	MDD8-1434HW	1/4	2	3/4	0.44	0.44	0.08	1.92	0.18	0.27
4	MDD8-1401HW	1/4	2	1	0.44	0.44	0.08	2.17	0.18	0.27
5	MDD8-3801HW	3/8	2	1	0.58	0.44	0.06	2.38	0.18	0.27
6	MDDL8-1058H /W	#10	2	5/8	0.41	0.81	0.08	1.82	0.18	0.27
7	MDDL8-1034H /W	#10	2	3/4	0.41	0.81	0.08	1.95	0.18	0.27
8	MDDL8-1458H /W	1/4	2	5/8	0.44	0.81	0.08	1.91	0.18	0.27
9	MDDL8-1434H /W	1/4	2	3/4	0.44	0.81	0.08	2.03	0.18	0.27
10	MDDL8-1401H /W	1/4	2	1	0.44	0.81	0.08	2.28	0.18	0.27
11	MDDL8-3801H /W	3/8	2	1	0.58	0.81	0.06	2.49	0.18	0.27

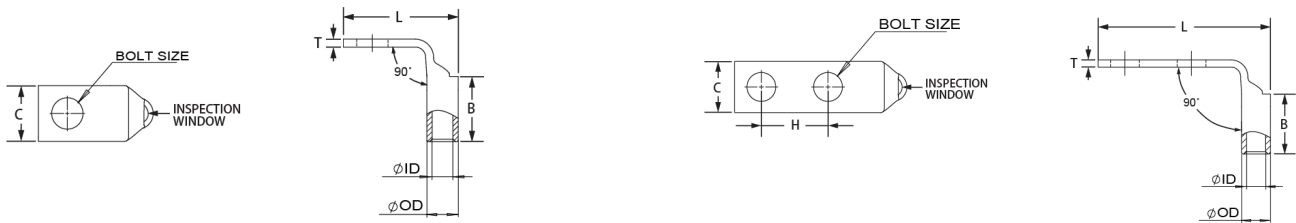
8 AWG Grounding Lug/Red Printed/90° Angle



ITEM #	Part No#	BOLT SIZE	Holes	Hole Spacing	Tang Width	Barrel length	Tang Thickness	Over all length	Inner diameter	Outer diameter
			QTY	H (inch)	C (inch)	B (inch)	T (inch)	L (inch)	ID (inch)	OD (inch)
1	MDS8-10FW	#8-#10	1	/	0.41	0.44	0.08	0.90	0.18	0.27
2	MDS8-14FW	1/4	1	/	0.44	0.44	0.08	0.99	0.18	0.27
3	MDS8-56FW	5/16	1	/	0.52	0.44	0.06	1.11	0.18	0.27
4	MDS8-38FW	3/8	1	/	0.58	0.44	0.06	1.21	0.18	0.27
5	MDL8-10F /W	#10	1	/	0.41	0.81	0.08	1.07	0.18	0.27
6	MDL8-14F /W	1/4	1	/	0.44	0.81	0.08	1.07	0.18	0.27

ITEM #	Part No#	BOLT SIZE	Holes	Hole Spacing	Tang Width	Barrel length	Tang Thickness	Over all length	Inner diameter	Outer diameter
			QTY	H (inch)	C (inch)	B (inch)	T (inch)	L (inch)	ID (inch)	OD (inch)
1	MDD8-1058FW	#10	2	5/8	0.41	0.44	0.08	1.53	0.18	0.27

Notice: Any dimension difference, please contact us to confirm.



ITEM #	Part No#	BOLT SIZE	Holes	Hole Spacing	Tang Width	Barrel length	Tang Thickness	Over all length	Inner diameter	Outer diameter
			QTY	H (inch)	C (inch)	B (inch)	T (inch)	L (inch)	ID (inch)	OD (inch)
2	MDD8-1458FW	1/4	2	5/8	0.44	0.44	0.08	1.62	0.18	0.27
3	MDD8-1434FW	1/4	2	3/4	0.44	0.44	0.08	1.74	0.18	0.27
4	MDD8-1401FW	1/4	2	1	0.44	0.44	0.08	1.99	0.18	0.27
5	MDD8-3801FW	3/8	2	1	0.58	0.44	0.06	2.21	0.18	0.27
6	MDDL8-1058F/W	#10	2	5/8	0.41	0.81	0.08	1.53	0.18	0.27
7	MDDL8-1034F/W	#10	2	3/4	0.41	0.81	0.08	1.65	0.18	0.27
8	MDDL8-1458F/W	1/4	2	5/8	0.44	0.81	0.08	1.61	0.18	0.27
9	MDDL8-1434F/W	1/4	2	3/4	0.44	0.81	0.08	1.74	0.18	0.27
10	MDDL8-1401F/W	1/4	2	1	0.44	0.81	0.08	1.99	0.18	0.27
11	MDDL8-3801F/W	3/8	2	1	0.58	0.81	0.06	2.21	0.18	0.27

Notice: Any dimension difference, please contact us to confirm.

Code Conductor, For 6 AWG Cable

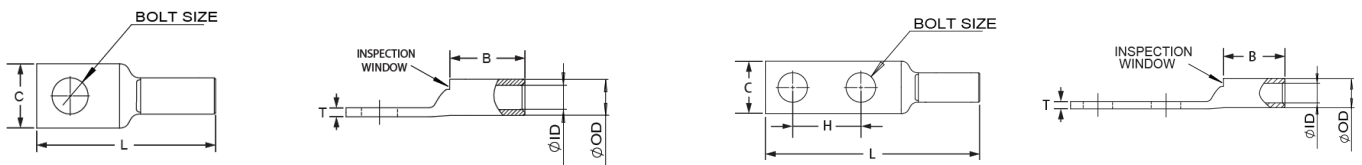
- Cable lugs are connecting devices used primarily for terminating and joining cable and wire conductors in electrical installations and equipment.
- These lugs are used for severe-duty applications and have thicker walls for greater strength and conductivity.
- Suitable for various copper cable and wire types, as long as the correct size is selected and the relevant "crimping" method is used.
- Manufactured from high conductivity copper which is tin plated to prevent corrosion.
- Easy to use in conjunction with mechanical or hydraulic crimping equipment.
- Color-Coded for Easy Identification.



Specifications

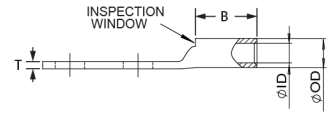
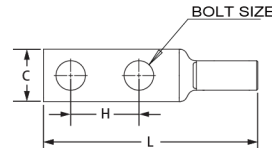
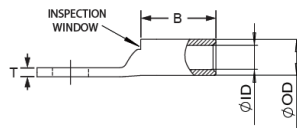
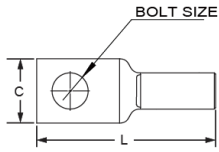
Material	Copper	Tongue Angle	Straight, 45°, 90°
Finish/Coating	Tin-Plated, Nickel-Plated	Barrel Type	Standard, Long, With or Without Inspection Window
Wire Range	6 AWG	Tongue Type	Standard, Narrow
Color Code	Blue	Certification	UL, RoHS, ISO9001
Bolt Size	1/4, 5/16, 3/8, 1/2, #6, #8, #10	Customizable	Yes

6 AWG Grounding Lug/Blue Printed/Straight Type



ITEM #	Part No#	BOLT SIZE	Holes	Hole Spacing	Tang Width	Barrel length	Tang Thickness	Over all length	Inner diameter	Outer diameter
			QTY	H (inch)	C (inch)	B (inch)	T (inch)	L (inch)	ID (inch)	OD (inch)
1	MDS6-10W	#8-#10	1	/	0.41	0.54	0.09	1.27	0.22	0.31
2	MDS6-14W	1/4	1	/	0.45	0.54	0.08	1.45	0.22	0.31
3	MDS6-56W	5/16	1	/	0.52	0.54	0.07	1.52	0.22	0.31
4	MDS6-38W	3/8	1	/	0.63	0.54	0.06	1.62	0.22	0.31
5	MDS6-12W	1/2	1	/	0.75	0.54	0.07	1.87	0.22	0.31
6	MD6-10W	#10	1	/	0.45	0.81	0.09	1.52	0.22	0.31
7	MD6-14W	1/4	1	/	0.48	0.81	0.08	1.61	0.22	0.31
8	MD6-56W	5/16	1	/	0.56	0.81	0.07	1.73	0.22	0.31
9	MD6-38W	3/8	1	/	0.63	0.81	0.06	1.83	0.22	0.31
10	MD6-12W	1/2	1	/	0.75	0.81	0.07	2.23	0.22	0.31

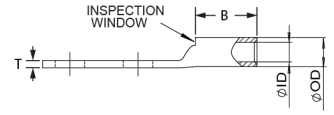
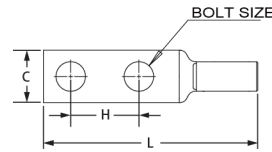
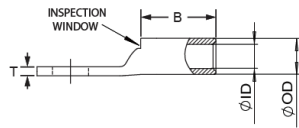
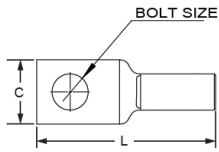
Notice: Any dimension difference, please contact us to confirm.



ITEM #	Part No#	BOLT SIZE	Holes	Hole Spacing	Tang Width	Barrel length	Tang Thickness	Over all length	Inner diameter	Outer diameter
			QTY	H (inch)	C (inch)	B (inch)	T (inch)	L (inch)	ID (inch)	OD (inch)
11	MD6-06WNT	#6	1	/	0.29	0.54	0.09	1.17	0.22	0.31
12	MDL6-08	#8	1	/	0.42	1.12	0.09	1.83	0.22	0.31
13	MDL6-10	#10	1	/	0.42	1.12	0.09	1.89	0.22	0.31
14	MDL6-14	1/4	1	/	0.41	1.12	0.09	1.81	0.22	0.31
15	MDL6-56	5/16	1	/	0.52	1.12	0.07	2.08	0.22	0.31
16	MDL6-38	3/8	1	/	0.58	1.12	0.06	2.21	0.22	0.31
17	MDL6-12	1/2	1	/	0.75	1.12	0.12	2.64	0.22	0.31
18	MDL6-08/W	#8	1	/	0.42	1.12	0.09	1.83	0.22	0.31
19	MDL6-10/W	#10	1	/	0.42	1.12	0.09	1.89	0.22	0.31
20	MDL6-56/W	5/16	1	/	0.45	1.12	0.08	1.80	0.22	0.31
21	MDL6-14/W	1/4	1	/	0.45	1.12	0.08	2.02	0.22	0.31
22	MDL6-38/W	3/8	1	/	0.58	1.12	0.06	2.21	0.22	0.31
23	MDL6-12/W	1/2	1	/	0.75	1.12	0.12	2.46	0.22	0.31

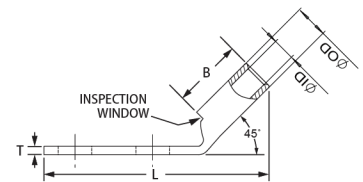
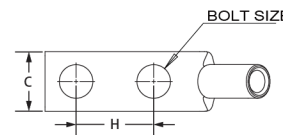
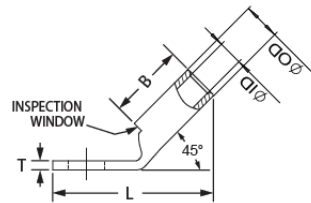
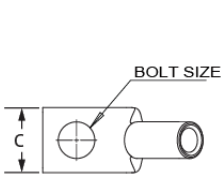
ITEM #	Part No#	BOLT SIZE	Holes	Hole Spacing	Tang Width	Barrel length	Tang Thickness	Over all length	Inner diameter	Outer diameter
			QTY	H (inch)	C (inch)	B (inch)	T (inch)	L (inch)	ID (inch)	OD (inch)
1	MDDS6-1012W	#10	2	1/2	0.42	0.54	0.09	1.79	0.22	0.31
2	MDDS6-1058W	#10	2	5/8	0.42	0.54	0.09	2.06	0.22	0.31
3	MDDS6-1001W	#10	2	1	0.42	0.54	0.09	2.52	0.22	0.31
4	MDDS6-1412W	1/4	2	1/2	0.45	0.54	0.08	1.94	0.22	0.31
5	MDDS6-1458W	1/4	2	5/8	0.45	0.54	0.08	2.07	0.22	0.31
6	MDDS6-1434W	1/4	2	3/4	0.45	0.54	0.08	2.19	0.22	0.31
7	MDDS6-1401W	1/4	2	1	0.45	0.54	0.08	2.44	0.22	0.31
8	MDDS6-5634W	5/16	2	3/4	0.52	0.54	0.07	2.53	0.22	0.31
9	MDDS6-5601W	5/16	2	1	0.52	0.54	0.07	2.78	0.22	0.31
10	MDDS6-3801W	3/8	2	1	0.58	0.54	0.06	2.63	0.22	0.31
11	MDDS6-1243W	1/2	2	1-3/4	0.75	0.54	0.06	3.50	0.22	0.31
12	MDD6-1058W	#10	2	5/8	0.42	0.81	0.08	2.15	0.22	0.31
13	MDD6-1034W	#10	2	3/4	0.42	0.81	0.08	2.27	0.22	0.31
14	MDD6-1001W	#10	2	1	0.42	0.81	0.08	2.52	0.22	0.31
15	MDD6-1458W	1/4	2	5/8	0.45	0.81	0.08	2.24	0.22	0.31
16	MDD6-1434W	1/4	2	3/4	0.45	0.81	0.08	2.36	0.22	0.31
17	MDD6-1401W	1/4	2	1	0.45	0.81	0.08	2.61	0.22	0.31
18	MDD6-5601W	5/16	2	1	0.56	0.81	0.07	2.73	0.22	0.31

Notice: Any dimension difference, please contact us to confirm.



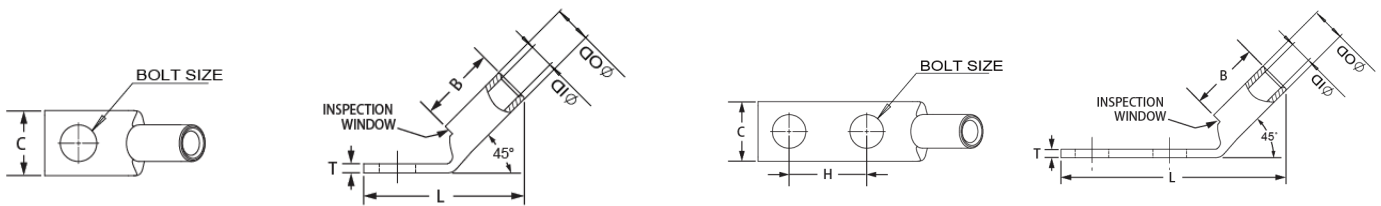
ITEM #	Part No#	BOLT SIZE	Holes	Hole Spacing	Tang Width	Barrel length	Tang Thickness	Over all length	Inner diameter	Outer diameter
			QTY	H (inch)	C (inch)	B (inch)	T (inch)	L (inch)	ID (inch)	OD (inch)
19	MDD6-3801W	3/8	2	1	0.62	0.81	0.06	2.83	0.22	0.31
20	MDDL6-1034	#10	2	3/4	0.42	1.12	0.09	2.65	0.22	0.31
21	MDDL6-1458	1/4	2	5/8	0.45	1.12	0.08	2.65	0.22	0.31
22	MDDL6-1434	1/4	2	3/4	0.45	1.12	0.08	2.78	0.22	0.31
23	MDDL6-1401	1/4	2	1	0.45	1.12	0.08	3.03	0.22	0.31
24	MDDL6-3834	3/8	2	3/4	0.58	1.12	0.06	2.97	0.22	0.31
25	MDDL6-3801	3/8	2	1	0.58	1.12	0.06	3.22	0.22	0.31
26	MDDL6-38U	3/8	2	3/4-1	0.58	1.12	0.06	3.22	0.22	0.31
27	MDDL6-3878	3/8	2	7/8	0.58	1.12	0.06	3.09	0.22	0.31
28	MDDL6-1034/W	#10	2	3/4	0.42	1.12	0.09	2.65	0.22	0.31
29	MDDL6-1458/W	1/4	2	5/8	0.45	1.12	0.08	2.65	0.22	0.31
30	MDDL6-1412/W	1/4	2	1/2	0.45	1.12	0.08	2.40	0.22	0.31
31	MDDL6-1434/W	1/4	2	3/4	0.45	1.12	0.08	2.78	0.22	0.31
32	MDDL6-1401/W	1/4	2	1	0.45	1.12	0.08	3.03	0.22	0.31
33	MDDL6-5634/W	5/16	2	3/4	0.58	1.12	0.07	2.80	0.22	0.31
34	MDDL6-3834/W	3/8	2	3/4	0.58	1.12	0.06	2.97	0.22	0.31
35	MDDL6-3878/W	3/8	2	7/8	0.58	1.12	0.06	3.09	0.22	0.31
36	MDDL6-3801/W	3/8	2	1	0.58	1.12	0.06	3.22	0.22	0.31
37	MDDL6-38U/W	3/8	2	3/4-1	0.58	1.12	0.06	3.22	0.22	0.31
38	MDDL6-3843/W	3/8	2	1-3/4	0.58	1.12	0.06	3.97	0.22	0.31
39	MDDL6-1243/W	1/2	2	1-3/4	0.83	1.12	0.12	4.40	0.22	0.22
40	MDD6-10U/W	#10	2	5/8-3/4	0.45	0.81	0.08	2.21	0.22	0.22
41	MDDL6-14U/W	1/4	2	3/4-1	0.45	1.12	0.08	2.90	0.22	0.22

6 AWG Grounding Lug/Blue Printed/45° Angle



ITEM #	Part No#	BOLT SIZE	Holes	Hole Spacing	Tang Width	Barrel length	Tang Thickness	Over all length	Inner diameter	Outer diameter
			QTY	H (inch)	C (inch)	B (inch)	T (inch)	L (inch)	ID (inch)	OD (inch)
1	MDS6-10HW	#8-#10	1	/	0.41	0.50	0.09	1.06	0.22	0.31

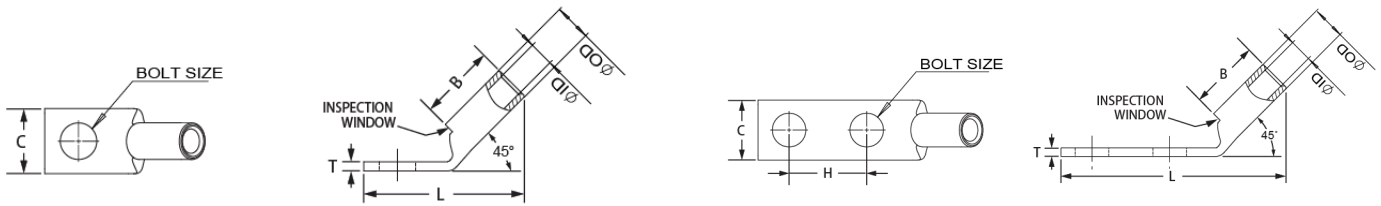
Notice: Any dimension difference, please contact us to confirm.



ITEM #	Part No#	BOLT SIZE	Holes	Hole Spacing	Tang Width	Barrel length	Tang Thickness	Over all length	Inner diameter	Outer diameter
			QTY	H (inch)	C (inch)	B (inch)	T (inch)	L (inch)	ID (inch)	OD (inch)
2	MDS6-14HW	1/4	1	/	0.45	0.50	0.08	1.14	0.22	0.31
3	MDS6-56HW	5/16	1	/	0.52	0.50	0.07	1.26	0.22	0.31
4	MDS6-38HW	3/8	1	/	0.63	0.50	0.06	1.35	0.22	0.31
5	MD6-10HW	#10	1	/	0.45	0.81	0.09	1.29	0.22	0.31
6	MD6-14HW	1/4	1	/	0.48	0.81	0.08	1.38	0.22	0.31
7	MD6-56HW	5/16	1	/	0.56	0.81	0.07	1.49	0.22	0.31
8	MD6-38HW	3/8	1	/	0.63	0.81	0.06	1.59	0.22	0.31
9	MDL6-08H/W	#8	1	/	0.42	1.12	0.09	1.53	0.22	0.31
10	MDL6-10H/W	#10	1	/	0.42	1.12	0.09	1.54	0.22	0.31
11	MDL6-14H/W	1/4	1	/	0.41	1.12	0.09	1.62	0.22	0.31
12	MDL6-56H/W	5/16	1	/	0.52	1.12	0.07	1.65	0.22	0.31
13	MDL6-38H/W	3/8	1	/	0.58	1.12	0.06	1.83	0.22	0.31

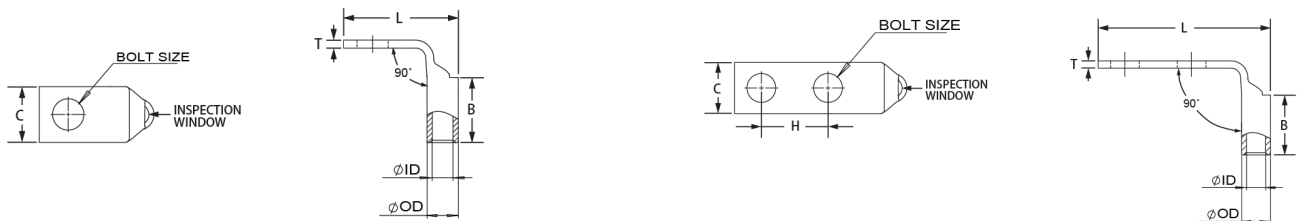
ITEM #	Part No#	BOLT SIZE	Holes	Hole Spacing	Tang Width	Barrel length	Tang Thickness	Over all length	Inner diameter	Outer diameter
			QTY	H (inch)	C (inch)	B (inch)	T (inch)	L (inch)	ID (inch)	OD (inch)
1	MDDS6-1058HW	#10	2	5/8	0.42	0.54	0.09	1.73	0.22	0.31
2	MDDS6-1034HW	#10	2	3/4	0.42	0.54	0.09	1.85	0.22	0.31
3	MDDS6-1001HW	#10	2	1	0.42	0.54	0.08	2.10	0.22	0.31
4	MDDS6-1412HW	1/4	2	1/2	0.45	0.54	0.08	1.69	0.22	0.31
5	MDDS6-1458HW	1/4	2	5/8	0.45	0.54	0.08	1.81	0.22	0.31
6	MDDS6-1434HW	1/4	2	3/4	0.45	0.54	0.08	1.94	0.22	0.31
7	MDDS6-1401HW	1/4	2	1	0.45	0.54	0.08	2.19	0.22	0.31
8	MDDS6-5634HW	5/16	2	3/4	0.52	0.54	0.07	2.05	0.22	0.31
9	MDDS6-5601HW	5/16	2	1	0.52	0.54	0.07	2.30	0.22	0.31
10	MDDS6-3801HW	3/8	2	1	0.58	0.54	0.06	2.40	0.22	0.31
11	MDD6-1058HW	#10	2	5/8	0.42	0.81	0.08	1.92	0.22	0.31
12	MDD6-1034HW	#10	2	3/4	0.42	0.81	0.08	2.04	0.22	0.31
13	MDD6-1001HW	#10	2	1	0.42	0.81	0.08	2.29	0.22	0.31
14	MDD6-1458HW	1/4	2	5/8	0.45	0.81	0.08	2.00	0.22	0.31
15	MDD6-1434HW	1/4	2	3/4	0.45	0.81	0.08	2.13	0.22	0.31
16	MDD6-1401HW	1/4	2	1	0.45	0.81	0.08	2.38	0.22	0.31
17	MDD6-5601HW	5/16	2	1	0.56	0.81	0.07	2.49	0.22	0.31
18	MDD6-3801HW	3/8	2	1	0.62	0.81	0.06	2.59	0.22	0.31
19	MDDL6-1058H/W	#10	2	5/8	0.42	1.12	0.09	2.11	0.22	0.31

Notice: Any dimension difference, please contact us to confirm.



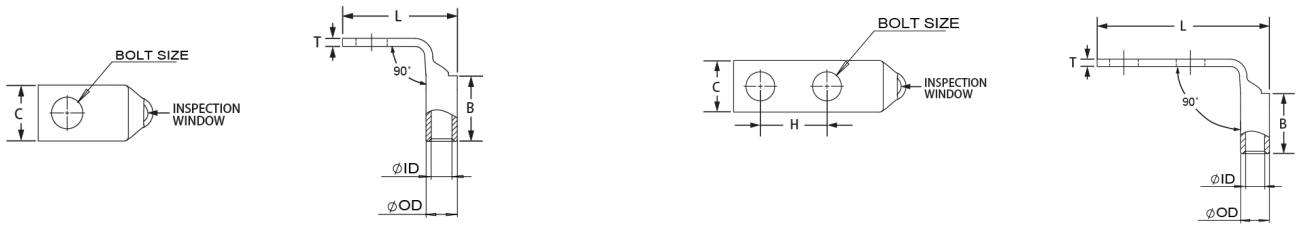
ITEM #	Part No#	BOLT SIZE	Holes	Hole Spacing	Tang Width	Barrel length	Tang Thickness	Over all length	Inner diameter	Outer diameter
			QTY	H (inch)	C (inch)	B (inch)	T (inch)	L (inch)	ID (inch)	OD (inch)
20	MDDL6-1034H/W	#10	2	3/4	0.42	0.81	0.09	2.24	0.22	0.31
21	MDDL6-1412H/W	1/4	2	1/2	0.45	0.81	0.08	2.08	0.22	0.31
22	MDDL6-1458H/W	1/4	2	5/8	0.45	0.81	0.08	2.20	0.22	0.31
23	MDDL6-1434H/W	1/4	2	3/4	0.45	0.81	0.08	2.33	0.22	0.31
24	MDDL6-1401H/W	1/4	2	1	0.45	1.12	0.08	2.58	0.22	0.31
25	MDDL6-5634H/W	5/16	2	3/4	0.56	1.12	0.08	2.44	0.22	0.31
26	MDDL6-3834H/W	3/8	2	3/4	0.58	1.12	0.06	2.54	0.22	0.31
27	MDDL6-3878H/W	3/8	2	7/8	0.58	1.12	0.06	2.68	0.22	0.31
28	MDDL6-3801H/W	3/8	2	1	0.58	1.12	0.06	2.79	0.22	0.31
29	MDDL6-14UH/W	1/4	2	1/2-5/8	0.45	1.12	0.08	2.10	0.22	0.31
30	MDDL6-38UH/W	3/8	2	3/4-1	0.58	1.12	0.06	2.79	0.22	0.31

6 AWG Grounding Lug/Blue Printed/90° Angle



ITEM #	Part No#	BOLT SIZE	Holes	Hole Spacing	Tang Width	Barrel length	Tang Thickness	Over all length	Inner diameter	Outer diameter
			QTY	H (inch)	C (inch)	B (inch)	T (inch)	L (inch)	ID (inch)	OD (inch)
1	MDS6-10FW	#8-#10	1	/	0.41	0.50	0.09	0.94	0.22	0.31
2	MDS6-14FW	1/4	1	/	0.45	0.50	0.08	1.03	0.22	0.31
3	MDS6-56FW	5/16	1	/	0.52	0.50	0.07	1.15	0.22	0.31
4	MDS6-38FW	3/8	1	/	0.63	0.50	0.06	1.25	0.22	0.31
5	MD6-10FW	#10	1	/	0.45	0.81	0.09	0.94	0.22	0.31
6	MD6-14FW	1/4	1	/	0.48	0.81	0.08	1.03	0.22	0.31
7	MD6-56FW	5/16	1	/	0.56	0.81	0.07	1.15	0.22	0.31
8	MD6-38FW	3/8	1	/	0.63	0.81	0.06	1.25	0.22	0.31
9	MDL6-08F/W	#8	1	/	0.42	1.12	0.09	1.48	0.22	0.31
10	MDL6-10F/W	#10	1	/	0.42	1.12	0.09	1.48	0.22	0.31
11	MDL6-14F/W	1/4	1	/	0.41	1.12	0.09	1.15	0.22	0.31

Notice: Any dimension difference, please contact us to confirm.



ITEM #	Part No#	BOLT SIZE	Holes	Hole Spacing	Tang Width	Barrel length	Tang Thickness	Over all length	Inner diameter	Outer diameter
			QTY	H (inch)	C (inch)	B (inch)	T (inch)	L (inch)	ID (inch)	OD (inch)
12	MDL6-56F/W	5/16	1	/	0.52	1.12	0.07	1.49	0.22	0.31
13	MDL6-38F/W	3/8	1	/	0.58	1.12	0.06	1.49	0.22	0.31

ITEM #	Part No#	BOLT SIZE	Holes	Hole Spacing	Tang Width	Barrel length	Tang Thickness	Over all length	Inner diameter	Outer diameter
			QTY	H (inch)	C (inch)	B (inch)	T (inch)	L (inch)	ID (inch)	OD (inch)
1	MDDS6-1058FW	#10	2	5/8	0.42	0.54	0.09	1.57	0.22	0.31
2	MDDS6-1034FW	#10	2	3/4	0.42	0.54	0.09	1.69	0.22	0.31
3	MDDS6-1001FW	#10	2	1	0.42	0.54	0.08	1.94	0.22	0.31
4	MDDS6-1412FW	1/4	2	1/2	0.45	0.54	0.08	1.60	0.22	0.31
5	MDDS6-1458FW	1/4	2	5/8	0.45	0.54	0.08	1.66	0.22	0.31
6	MDDS6-1434FW	1/4	2	3/4	0.45	0.54	0.08	1.78	0.22	0.31
7	MDDS6-1401FW	1/4	2	1	0.45	0.54	0.08	2.03	0.22	0.31
8	MDDS6-5634FW	5/16	2	3/4	0.52	0.54	0.07	1.80	0.22	0.31
9	MDDS6-5601FW	5/16	2	1	0.52	0.54	0.07	2.15	0.22	0.31
10	MDDS6-3801FW	3/8	2	1	0.62	0.54	0.06	2.25	0.22	0.31
11	MDD6-1058FW	#10	2	5/8	0.42	0.81	0.08	1.57	0.22	0.31
12	MDD6-1034FW	#10	2	3/4	0.42	0.81	0.08	1.69	0.22	0.31
13	MDD6-1001FW	#10	2	1	0.42	0.81	0.08	1.94	0.22	0.31
14	MDD6-1458FW	1/4	2	5/8	0.45	0.81	0.08	1.66	0.22	0.31
15	MDD6-1434FW	1/4	2	3/4	0.45	0.81	0.08	1.78	0.22	0.31
16	MDD6-1401FW	1/4	2	1	0.45	0.81	0.08	2.03	0.22	0.31
17	MDD6-5601FW	5/16	2	1	0.56	0.81	0.07	2.15	0.22	0.31
18	MDD6-3801FW	3/8	2	1	0.62	0.81	0.06	2.25	0.22	0.31
19	MDDL6-1058F/W	#10	2	5/8	0.42	1.12	0.09	1.57	0.22	0.31
20	MDDL6-1034F/W	#10	2	3/4	0.42	1.12	0.09	1.69	0.22	0.31
21	MDDL6-1412F/W	1/4	2	1/2	0.45	1.12	0.08	1.53	0.22	0.31
22	MDDL6-1458F/W	1/4	2	5/8	0.45	1.12	0.08	1.66	0.22	0.31
23	MDDL6-1434F/W	1/4	2	3/4	0.45	1.12	0.08	1.66	0.22	0.31
24	MDDL6-1401F/W	1/4	2	1	0.45	1.12	0.08	2.03	0.22	0.31
25	MDDL6-5634F/W	5/16	2	3/4	0.56	1.12	0.08	2.28	0.22	0.31
26	MDDL6-3834F/W	3/8	2	3/4	0.58	1.12	0.06	1.90	0.22	0.31
27	MDDL6-3878F/W	3/8	2	7/8	0.58	1.12	0.06	2.00	0.22	0.31
28	MDDL6-3801F/W	3/8	2	1	0.58	1.12	0.06	2.13	0.22	0.31
29	MDDL6-14UF/W	1/4	2	1/2-5/8	0.45	1.12	0.08	1.78	0.22	0.31
30	MDDL6-38UF/W	3/8	2	3/4-1	0.58	1.12	0.06	2.25	0.22	0.31

Notice: Any dimension difference, please contact us to confirm.

Code Conductor, For 4 AWG Cable

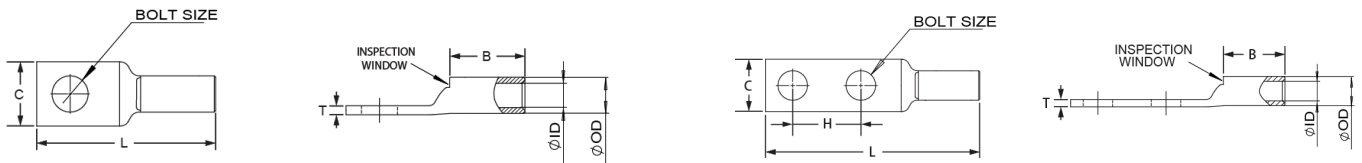
- Cable lugs are connecting devices used primarily for terminating and joining cable and wire conductors in electrical installations and equipment.
- These lugs are used for severe-duty applications and have thicker walls for greater strength and conductivity.
- Suitable for various copper cable and wire types, as long as the correct size is selected and the relevant "crimping" method is used.
- Manufactured from high conductivity copper which is tin plated to prevent corrosion.
- Easy to use in conjunction with mechanical or hydraulic crimping equipment.
- Color-Coded for Easy Identification.



Specifications

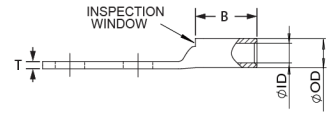
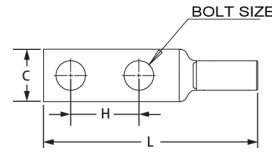
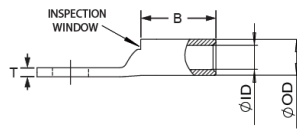
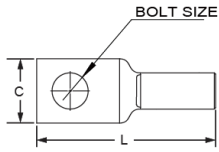
Material	Copper	Tongue Angle	Straight, 45°, 90°
Finish/Coating	Tin-Plated, Nickel-Plated	Barrel Type	Standard, Long, With or Without Inspection Window
Wire Range	4 AWG	Tongue Type	Standard, Narrow
Color Code	Gray	Certification	UL, RoHS, ISO9001
Bolt Size	1/4, 5/16, 3/8, 1/2, #10	Customizable	Yes

4 AWG Grounding Lug/Gray Printed/Straight Type



ITEM #	Part No#	BOLT SIZE	Holes	Hole Spacing	Tang Width	Barrel length	Tang Thickness	Over all length	Inner diameter	Outer diameter
			QTY	H (inch)	C (inch)	B (inch)	T (inch)	L (inch)	ID (inch)	OD (inch)
1	MDS4-10W	#10	1	/	0.52	0.53	0.09	1.26	0.28	0.38
2	MDS4-14W	1/4	1	/	0.52	0.53	0.09	1.35	0.28	0.38
3	MDS4-56W	5/16	1	/	0.55	0.53	0.09	1.47	0.28	0.38
4	MDS4-38W	3/8	1	/	0.58	0.53	0.07	1.57	0.28	0.38
5	MD4-10W	#8-#10	1	/	0.50	0.81	0.09	1.58	0.28	0.38
6	MD4-14W	1/4	1	/	0.50	0.81	0.09	1.74	0.28	0.38
7	MD4-56W	5/16	1	/	0.50	0.81	0.08	1.79	0.28	0.38
8	MD4-38W	3/8	1	/	0.58	0.81	0.09	1.92	0.28	0.38
9	MD4-12W	1/2	1	/	0.71	0.81	0.06	2.20	0.28	0.38
10	MD4-10WNT	#10	1	/	0.40	0.81	0.09	1.73	0.28	0.38

Notice: Any dimension difference, please contact us to confirm.

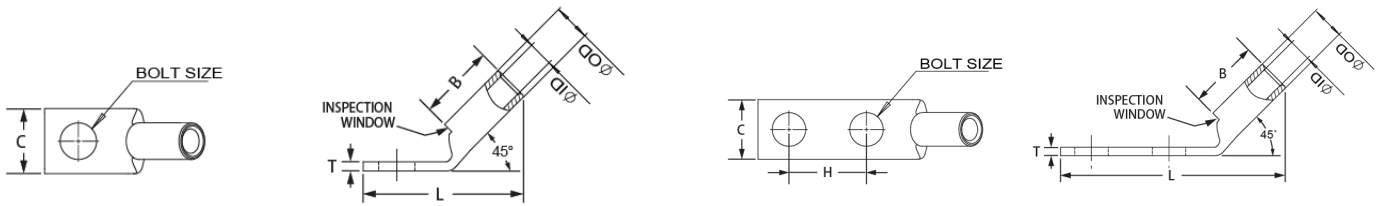


ITEM #	Part No#	BOLT SIZE	Holes	Hole Spacing	Tang Width	Barrel length	Tang Thickness	Over all length	Inner diameter	Outer diameter
			QTY	H (inch)	C (inch)	B (inch)	T (inch)	L (inch)	ID (inch)	OD (inch)
11	MDL4-10/W	#10	1	/	0.50	1.12	0.09	1.94	0.28	0.38
12	MDL4-14/W	1/4	1	/	0.50	1.12	0.09	2.04	0.28	0.38
13	MDL4-38/W	3/8	1	/	0.58	1.12	0.08	2.22	0.28	0.38
14	MDL4-12/W	1/2	1	/	0.73	1.12	0.06	2.50	0.28	0.38
15	MDL4-56/W	5/16	1	/	0.58	1.12	0.09	2.10	0.28	0.38

ITEM #	Part No#	BOLT SIZE	Holes	Hole Spacing	Tang Width	Barrel length	Tang Thickness	Over all length	Inner diameter	Outer diameter
			QTY	H (inch)	C (inch)	B (inch)	T (inch)	L (inch)	ID (inch)	OD (inch)
1	MDDS4-1458W	1/4	2	5/8	0.55	0.50	0.09	2.08	0.28	0.38
2	MDDS4-1434W	1/4	2	3/4	0.55	0.50	0.09	2.20	0.28	0.38
3	MDDS4-1401W	1/4	2	1	0.55	0.50	0.09	2.45	0.28	0.38
4	MDDS4-5601W	5/16	2	1	0.55	0.50	0.09	2.52	0.28	0.38
5	MDDS4-3801W	3/8	2	1	0.58	0.50	0.08	2.68	0.28	0.38
6	MDDS4-1243W	1/2	2	1-3/4	0.83	0.50	0.12	3.87	0.28	0.38
7	MDD4-1058W	#10	2	5/8	0.55	0.81	0.09	2.24	0.28	0.38
8	MDD4-1458W	1/4	2	5/8	0.55	0.81	0.09	2.30	0.28	0.38
9	MDD4-1434W	1/4	2	3/4	0.55	0.81	0.09	2.49	0.28	0.38
10	MDD4-1401W	1/4	2	1	0.55	0.81	0.09	2.74	0.28	0.38
11	MDD4-5601W	5/16	2	1	0.55	0.81	0.09	2.80	0.28	0.38
12	MDD4-3801W	3/8	2	1	0.58	0.81	0.08	2.96	0.28	0.38
13	MDD4-1243W	1/2	2	1-3/4	0.83	0.81	0.12	4.14	0.28	0.38
14	MDDL4-1058/W	#10	2	5/8	0.50	1.12	0.09	2.55	0.28	0.38
15	MDDL4-1458/W	1/4	2	5/8	0.50	1.12	0.09	2.70	0.28	0.38
16	MDDL4-1034/W	#10	2	3/4	0.50	1.12	0.09	2.67	0.28	0.38
17	MDDL4-1434/W	1/4	2	3/4	0.50	1.12	0.09	2.80	0.28	0.38
18	MDDL4-3801/W	3/8	2	1	0.58	1.12	0.08	3.23	0.28	0.38
19	MDDL4-38U/W	3/8	2	3/4-1	0.58	1.12	0.08	3.29	0.28	0.38
20	MDDL4-1243/W	1/2	2	1-3/4	0.83	1.12	0.12	4.45	0.28	0.38

Notice: Any dimension difference, please contact us to confirm.

4 AWG Grounding Lug/Gray Printed/45° Angle

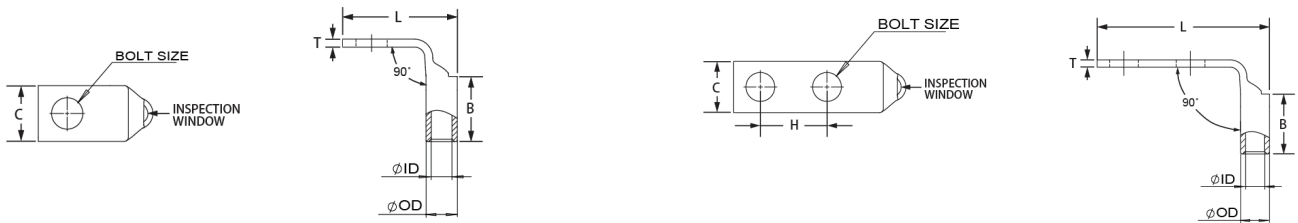


ITEM #	Part No#	BOLT SIZE	Holes	Hole Spacing	Tang Width	Barrel length	Tang Thickness	Over all length	Inner diameter	Outer diameter
			QTY	H (inch)	C (inch)	B (inch)	T (inch)	L (inch)	ID (inch)	OD (inch)
1	MDS4-10HW	#10	1	/	0.52	0.53	0.09	1.12	0.28	0.38
2	MDS4-14HW	1/4	1	/	0.52	0.53	0.09	1.21	0.28	0.38
3	MDS4-56HW	5/16	1	/	0.52	0.53	0.09	1.33	0.28	0.38
4	MDS4-38HW	3/8	1	/	0.58	0.53	0.07	1.42	0.28	0.38
5	MD4-10HW	#8-#10	1	/	0.50	0.81	0.09	1.31	0.28	0.38
6	MD4-14HW	1/4	1	/	0.50	0.81	0.09	1.40	0.28	0.38
7	MD4-56HW	5/16	1	/	0.50	0.81	0.08	1.52	0.28	0.38
8	MD4-38HW	3/8	1	/	0.58	0.81	0.09	1.61	0.28	0.38
9	MDL4-10H/W	#10	1	/	0.50	1.12	0.09	1.58	0.28	0.38
10	MDL4-14H/W	1/4	1	/	0.50	1.12	0.09	1.67	0.28	0.38
11	MDL4-56H/W	5/16	1	/	0.52	1.12	0.12	1.70	0.28	0.38

ITEM #	Part No#	BOLT SIZE	Holes	Hole Spacing	Tang Width	Barrel length	Tang Thickness	Over all length	Inner diameter	Outer diameter
			QTY	H (inch)	C (inch)	B (inch)	T (inch)	L (inch)	ID (inch)	OD (inch)
1	MDD4-1058HW	#10	2	5/8	0.50	0.81	0.09	1.94	0.28	0.38
2	MDD4-1034HW	#10	2	3/4	0.50	0.81	0.09	2.06	0.28	0.38
3	MDD4-1458HW	1/4	2	5/8	0.50	0.81	0.09	2.03	0.28	0.38
4	MDD4-1434HW	1/4	2	3/4	0.50	0.81	0.09	2.15	0.28	0.38
5	MDD4-1401HW	1/4	2	1	0.50	0.81	0.09	2.40	0.28	0.38
6	MDD4-5601HW	5/16	2	1	0.52	0.81	0.09	2.40	0.28	0.38
7	MDD4-3801HW	3/8	2	1	0.58	0.81	0.08	2.62	0.28	0.38
8	MDDL4-1058H/W	#10	2	5/8	0.50	1.12	0.09	2.13	0.28	0.38
9	MDDL4-1034H/W	#10	2	3/4	0.50	1.12	0.09	2.25	0.28	0.38
10	MDDL4-1458H/W	1/4	2	5/8	0.50	1.12	0.09	2.22	0.28	0.38
11	MDDL4-1434H/W	1/4	2	3/4	0.50	1.12	0.09	2.60	0.28	0.38
12	MDDL4-3801H/W	3/8	2	1	0.58	1.12	0.08	2.81	0.28	0.38

Notice: Any dimension difference, please contact us to confirm.

4 AWG Grounding Lug/Gray Printed/90° Angle



ITEM #	Part No#	BOLT SIZE	Holes	Hole Spacing	Tang Width	Barrel length	Tang Thickness	Over all length	Inner diameter	Outer diameter
			QTY	H (inch)	C (inch)	B (inch)	T (inch)	L (inch)	ID (inch)	OD (inch)
1	MDS4-10FW	#10	1	/	0.52	0.53	0.09	1.03	0.28	0.38
2	MDS4-14FW	1/4	1	/	0.52	0.53	0.09	1.12	0.28	0.38
3	MDS4-56FW	5/16	1	/	0.52	0.53	0.09	1.24	0.28	0.38
4	MDS4-38FW	3/8	1	/	0.58	0.53	0.07	1.34	0.28	0.38
5	MD4-10FW	#8-#10	1	/	0.50	0.81	0.09	1.03	0.28	0.38
6	MD4-14FW	1/4	1	/	0.50	0.81	0.09	1.12	0.28	0.38
7	MD4-56FW	5/16	1	/	0.50	0.81	0.08	1.24	0.28	0.38
8	MD4-38FW	3/8	1	/	0.58	0.81	0.09	1.34	0.28	0.38
9	MDL4-10F/W	#10	1	/	0.50	1.12	0.09	1.53	0.28	0.38
10	MDL4-14F/W	1/4	1	/	0.50	1.12	0.09	1.53	0.28	0.38
11	MDL4-56F/W	5/16	1	/	0.52	1.12	0.12	1.53	0.28	0.38

ITEM #	Part No#	BOLT SIZE	Holes	Hole Spacing	Tang Width	Barrel length	Tang Thickness	Over all length	Inner diameter	Outer diameter
			QTY	H (inch)	C (inch)	B (inch)	T (inch)	L (inch)	ID (inch)	OD (inch)
1	MDD4-1058FW	#10	2	5/8	0.50	0.81	0.09	1.65	0.28	0.38
2	MDD4-1034FW	#10	2	3/4	0.50	0.81	0.09	1.78	0.28	0.38
3	MDD4-1458FW	1/4	2	5/8	0.50	0.81	0.09	1.74	0.28	0.38
4	MDD4-1434FW	1/4	2	3/4	0.50	0.81	0.09	1.87	0.28	0.38
5	MDD4-1401FW	1/4	2	1	0.50	0.81	0.09	2.12	0.28	0.38
6	MDD4-5601FW	5/16	2	1	0.52	0.81	0.09	2.14	0.28	0.38
7	MDD4-3801FW	3/8	2	1	0.58	0.81	0.08	2.34	0.28	0.38
8	MDDL4-1058F/W	#10	2	5/8	0.50	1.12	0.09	1.65	0.28	0.38
9	MDDL4-1034F/W	#10	2	3/4	0.50	1.12	0.09	1.78	0.28	0.38
10	MDDL4-1458F/W	1/4	2	5/8	0.50	1.12	0.09	1.74	0.28	0.38
11	MDDL4-1434F/W	1/4	2	3/4	0.50	1.12	0.09	1.87	0.28	0.38
12	MDDL4-3801F/W	3/8	2	1	0.58	1.12	0.08	2.34	0.28	0.38

Notice: Any dimension difference, please contact us to confirm.

Code Conductor, For 2 AWG Cable

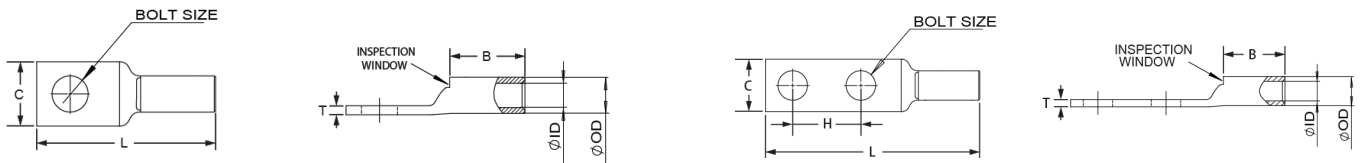
- Cable lugs are connecting devices used primarily for terminating and joining cable and wire conductors in electrical installations and equipment.
- These lugs are used for severe-duty applications and have thicker walls for greater strength and conductivity.
- Suitable for various copper cable and wire types, as long as the correct size is selected and the relevant "crimping" method is used.
- Manufactured from high conductivity copper which is tin plated to prevent corrosion.
- Easy to use in conjunction with mechanical or hydraulic crimping equipment.
- Color-Coded for Easy Identification.



Specifications

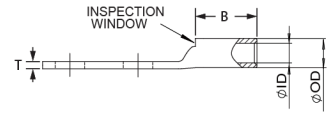
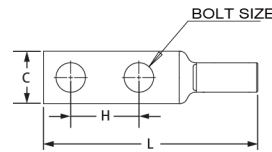
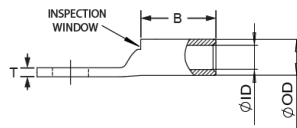
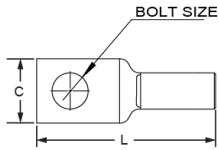
Material	Copper	Tongue Angle	Straight, 45°, 90°
Finish/Coating	Tin-Plated, Nickel-Plated	Barrel Type	Standard, Long, With or Without Inspection Window
Wire Range	2 AWG	Tongue Type	Standard, Narrow
Color Code	Brown	Certification	UL, RoHS, ISO9001
Bolt Size	1/4, 5/16, 3/8, 1/2, #10	Customizable	Yes

2 AWG Grounding Lug/Brown Printed/Straight Type



ITEM #	Part No#	BOLT SIZE	Holes	Hole Spacing	Tang Width	Barrel length	Tang Thickness	Over all length	Inner diameter	Outer diameter
			QTY	H (inch)	C (inch)	B (inch)	T (inch)	L (inch)	ID (inch)	OD (inch)
1	MDS2-14W	1/4	1	/	0.61	0.57	0.11	1.46	0.31	0.42
2	MDS2-56W	5/16	1	/	0.61	0.57	0.11	1.58	0.31	0.42
3	MDS2-38W	3/8	1	/	0.61	0.57	0.11	1.66	0.31	0.42
4	MDS2-12W	1/2	1	/	0.73	0.57	0.09	1.89	0.31	0.42
5	MD2-14W	1/4	1	/	0.61	0.88	0.11	1.88	0.31	0.42
6	MD2-56W	5/16	1	/	0.61	0.88	0.11	1.93	0.31	0.42
7	MD2-38W	3/8	1	/	0.61	0.88	0.11	2.06	0.31	0.42
8	MD2-12W	1/2	1	/	0.73	0.88	0.09	2.32	0.31	0.42
9	MD2-10WNT	#10	1	/	0.48	0.88	0.11	1.80	0.31	0.42
10	MD2-14WNT	1/4	1	/	0.50	0.88	0.11	1.80	0.31	0.42

Notice: Any dimension difference, please contact us to confirm.

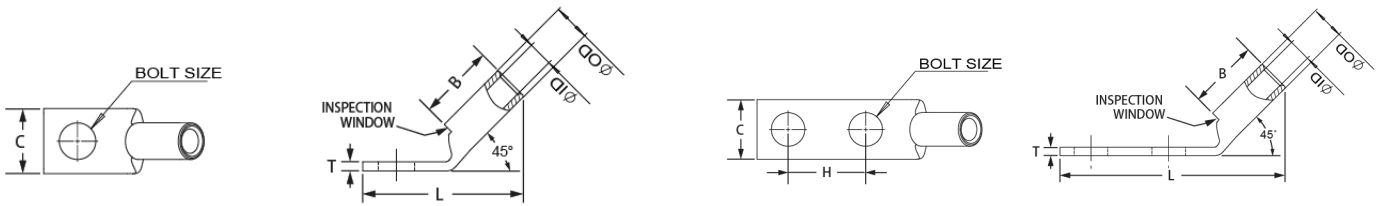


ITEM #	Part No#	BOLT SIZE	Holes	Hole Spacing	Tang Width	Barrel length	Tang Thickness	Over all length	Inner diameter	Outer diameter
			QTY	H (inch)	C (inch)	B (inch)	T (inch)	L (inch)	ID (inch)	OD (inch)
11	MD2-56WNT	5/16	1	/	0.49	0.88	0.11	1.82	0.31	0.42
12	MDL2-10/W	#10	1	/	0.60	1.25	0.11	2.10	0.31	0.42
13	MDL2-14/W	1/4	1	/	0.60	1.25	0.11	2.21	0.31	0.42
14	MDL2-56/W	5/16	1	/	0.60	1.25	0.11	2.29	0.31	0.42
15	MDL2-38/W	3/8	1	/	0.60	1.25	0.11	2.40	0.31	0.42
16	MDL2-12/W	1/2	1	/	0.73	1.25	0.09	2.65	0.31	0.42

ITEM #	Part No#	BOLT SIZE	Holes	Hole Spacing	Tang Width	Barrel length	Tang Thickness	Over all length	Inner diameter	Outer diameter
			QTY	H (inch)	C (inch)	B (inch)	T (inch)	L (inch)	ID (inch)	OD (inch)
1	MDD2-1458W	1/4	2	5/8	0.60	0.88	0.11	2.47	0.31	0.42
2	MDD2-1434W	1/4	2	3/4	0.60	0.88	0.11	2.60	0.31	0.42
3	MDD2-1401W	1/4	2	1	0.60	0.88	0.11	2.85	0.31	0.42
4	MDD2-5634W	5/16	2	3/4	0.60	0.88	0.11	2.67	0.31	0.42
5	MDD2-5601W	5/16	2	1	0.60	0.88	0.11	2.91	0.31	0.42
6	MDD2-3801W	3/8	2	1	0.60	0.88	0.11	3.03	0.31	0.42
7	MDD2-1243W	1/2	2	1-3/4	0.83	0.88	0.12	4.27	0.31	0.42
8	MDD2-1414WNT	1/4	2	1/4	0.48	0.88	0.11	2.60	0.31	0.42
9	MDD2-1458WNT	1/4	2	5/8	0.48	0.88	0.11	2.47	0.31	0.42
10	MDD2-1401WNT	1/4	2	1	0.48	0.88	0.11	2.84	0.31	0.42
11	MDDL2-1034/W	#10	2	3/4	0.60	1.25	0.11	2.85	0.31	0.42
12	MDDL2-1458/W	1/4	2	5/8	0.60	1.25	0.11	2.85	0.31	0.42
13	MDDL2-1434/W	1/4	2	3/4	0.60	1.25	0.11	2.97	0.31	0.42
14	MDDL2-1401/W	1/4	2	1	0.60	1.25	0.11	3.22	0.31	0.42
15	MDDL2-5658/W	5/16	2	5/8	0.60	1.25	0.11	2.91	0.31	0.42
16	MDDL2-5634/W	5/16	2	3/4	0.60	1.25	0.11	3.03	0.31	0.42
17	MDDL2-3834/W	3/8	2	3/4	0.60	1.25	0.11	3.16	0.31	0.42
18	MDDL2-3878/W	3/8	2	7/8	0.60	1.25	0.11	3.28	0.31	0.42
19	MDDL2-3801/W	3/8	2	1	0.60	1.25	0.11	3.41	0.31	0.42
20	MDDL2-38U/W	3/8	2	3/4-1	0.60	1.25	0.11	3.42	0.31	0.42
21	MDDL2-3843/W	3/8	2	1-3/4	0.60	1.25	0.11	4.16	0.31	0.42
22	MDDL2-1243/W	1/2	2	1-3/4	0.83	1.25	0.12	4.64	0.31	0.42

Notice: Any dimension difference, please contact us to confirm.

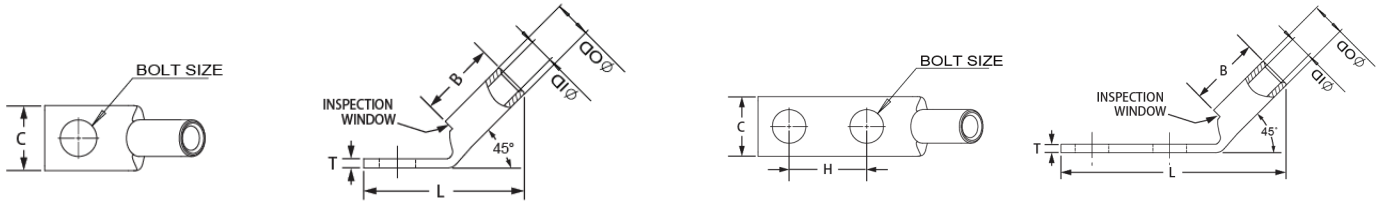
2 AWG Grounding Lug/Brown Printed/45° Angle



ITEM #	Part No#	BOLT SIZE	Holes	Hole Spacing	Tang Width	Barrel length	Tang Thickness	Over all length	Inner diameter	Outer diameter
			QTY	H (inch)	C (inch)	B (inch)	T (inch)	L (inch)	ID (inch)	OD (inch)
1	MDS2-14HW	1/4	1	/	0.61	0.57	0.11	1.27	0.31	0.42
2	MDS2-56HW	5/16	1	/	0.61	0.57	0.11	1.39	0.31	0.42
3	MDS2-38HW	3/8	1	/	0.61	0.57	0.11	1.46	0.31	0.42
4	MDS2-12HW	1/2	1	/	0.73	0.57	0.09	1.68	0.31	0.42
5	MD2-14HW	1/4	1	/	0.61	0.88	0.11	1.49	0.31	0.42
6	MD2-56HW	5/16	1	/	0.61	0.88	0.11	1.61	0.31	0.42
7	MD2-38HW	3/8	1	/	0.61	0.88	0.11	1.68	0.31	0.42
8	MD2-12HW	1/2	1	/	0.73	0.88	0.09	1.90	0.31	0.42
9	MDL2-10H/W	#10	1	/	0.60	1.25	0.11	1.76	0.31	0.42
10	MDL2-14H/W	1/4	1	/	0.60	1.25	0.11	1.93	0.31	0.42
11	MDL2-56H/W	5/16	1	/	0.60	1.25	0.11	1.95	0.31	0.42

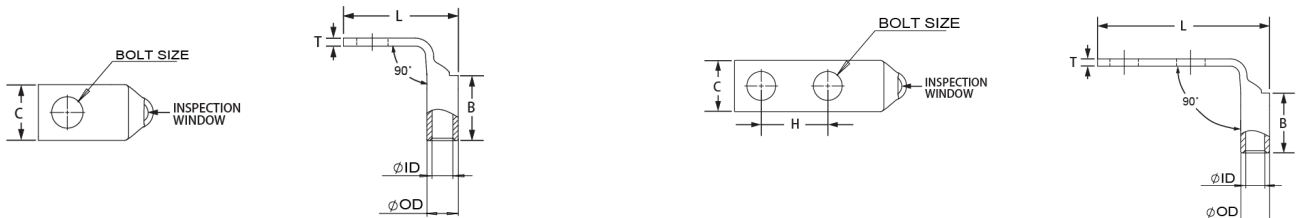
ITEM #	Part No#	BOLT SIZE	Holes	Hole Spacing	Tang Width	Barrel length	Tang Thickness	Over all length	Inner diameter	Outer diameter
			QTY	H (inch)	C (inch)	B (inch)	T (inch)	L (inch)	ID (inch)	OD (inch)
1	MDD2-1458HW	1/4	2	5/8	0.60	0.88	0.11	2.11	0.31	0.42
2	MDD2-1434HW	1/4	2	3/4	0.60	0.88	0.11	2.24	0.31	0.42
3	MDD2-1401HW	1/4	2	1	0.60	0.88	0.11	2.49	0.31	0.42
4	MDD2-5634HW	5/16	2	3/4	0.60	0.88	0.11	2.36	0.31	0.42
5	MDD2-3801HW	3/8	2	1	0.60	0.88	0.11	2.71	0.31	0.42
6	MDD2-1243HW	1/2	2	1-3/4	0.83	0.88	0.12	3.84	0.31	0.42
7	MDD2-1458HWNT	1/4	2	5/8	0.48	0.88	0.11	2.12	0.31	0.42
8	MDD2-1401HWNT	1/4	2	1	0.48	0.88	0.11	2.49	0.31	0.42
9	MDDL2-1058H/W	#10	2	5/8	0.60	1.25	0.11	2.24	0.31	0.42
10	MDDL2-1034H/W	#10	2	3/4	0.60	1.25	0.11	2.36	0.31	0.42
11	MDDL2-1458H/W	1/4	2	5/8	0.60	1.25	0.11	2.34	0.31	0.42
12	MDDL2-1434H/W	1/4	2	3/4	0.60	1.25	0.11	2.47	0.31	0.42
13	MDDL2-1401H/W	1/4	2	1	0.60	1.25	0.11	2.72	0.31	0.42
14	MDDL2-5658H/W	5/16	2	5/8	0.60	1.25	0.11	2.59	0.31	0.42
15	MDDL2-5634H/W	5/16	2	3/4	0.60	1.25	0.11	2.72	0.31	0.42
16	MDDL2-5678H/W	5/16	2	7/8	0.60	1.25	0.11	2.79	0.31	0.42

Notice: Any dimension difference, please contact us to confirm.



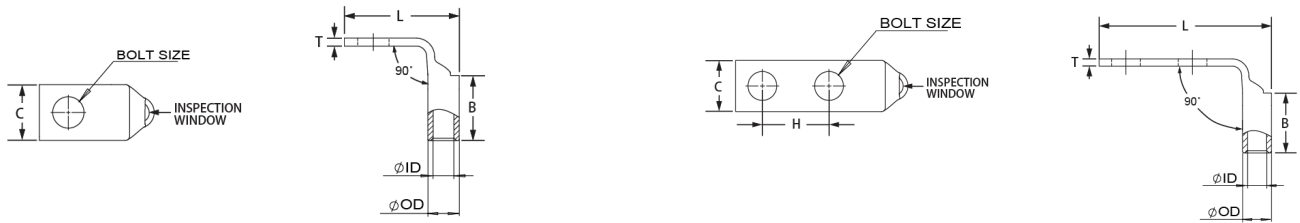
ITEM #	Part No#	BOLT SIZE	Holes	Hole Spacing	Tang Width	Barrel length	Tang Thickness	Over all length	Inner diameter	Outer diameter
			QTY	H (inch)	C (inch)	B (inch)	T (inch)	L (inch)	ID (inch)	OD (inch)
17	MDDL2-3834H/W	3/8	2	3/4	0.60	1.25	0.11	2.67	0.31	0.42
18	MDDL2-3878H/W	3/8	2	7/8	0.60	1.25	0.11	2.79	0.31	0.42
19	MDDL2-3801H/W	3/8	2	1	0.60	1.25	0.11	2.92	0.31	0.42
20	MDDL2-3843H/W	3/8	2	1-3/4	0.60	1.25	0.11	3.67	0.31	0.42
21	MDDL2-1243H/W	1/2	2	1-3/4	0.83	1.25	0.12	4.07	0.31	0.42
22	MDDL2-38UH/W	3/8	2	3/4-1	0.60	1.25	0.11	2.92	0.31	0.42

2 AWG Grounding Lug/Brown Printed/90° Angle



ITEM #	Part No#	BOLT SIZE	Holes	Hole Spacing	Tang Width	Barrel length	Tang Thickness	Over all length	Inner diameter	Outer diameter
			QTY	H (inch)	C (inch)	B (inch)	T (inch)	L (inch)	ID (inch)	OD (inch)
1	MDS2-14FW	1/4	1	/	0.61	0.57	0.11	1.24	0.31	0.42
2	MDS2-56FW	5/16	1	/	0.61	0.57	0.11	1.36	0.31	0.42
3	MDS2-38FW	3/8	1	/	0.61	0.57	0.11	1.44	0.31	0.42
4	MDS2-12FW	1/2	1	/	0.73	0.57	0.09	1.67	0.31	0.42
5	MD2-14FW	1/4	1	/	0.61	0.88	0.11	1.24	0.31	0.42
6	MD2-56FW	5/16	1	/	0.61	0.88	0.11	1.36	0.31	0.42
7	MD2-38FW	3/8	1	/	0.61	0.88	0.11	1.44	0.31	0.42
8	MD2-12FW	1/2	1	/	0.73	0.88	0.09	1.67	0.31	0.42
9	MDL2-10F/W	#10	1	/	0.60	1.25	0.11	1.74	0.31	0.42
10	MDL2-14F/W	1/4	1	/	0.60	1.25	0.11	1.74	0.31	0.42
11	MDL2-56F/W	5/16	1	/	0.60	1.25	0.11	1.74	0.31	0.42

Notice: Any dimension difference, please contact us to confirm.



ITEM #	Part No#	BOLT SIZE	Holes	Hole Spacing	Tang Width	Barrel length	Tang Thickness	Over all length	Inner diameter	Outer diameter
			QTY	H (inch)	C (inch)	B (inch)	T (inch)	L (inch)	ID (inch)	OD (inch)
1	MDD2-1458FW	1/4	2	5/8	0.60	0.88	0.11	1.86	0.31	0.42
2	MDD2-1434FW	1/4	2	3/4	0.60	0.88	0.11	1.99	0.31	0.42
3	MDD2-1401FW	1/4	2	1	0.60	0.88	0.11	2.24	0.31	0.42
4	MDD2-5634FW	5/16	2	3/4	0.60	0.88	0.11	2.11	0.31	0.42
5	MDD2-3801FW	3/8	2	1	0.60	0.88	0.11	2.47	0.31	0.42
6	MDD2-1243FW	1/2	2	1-3/4	0.83	0.88	0.12	3.61	0.31	0.42
7	MDD2-1458FWNT	1/4	2	5/8	0.48	0.88	0.11	1.86	0.31	0.42
8	MDD2-1401FWNT	1/4	2	1	0.48	0.88	0.11	2.24	0.31	0.42
9	MDDL2-1058F/W	#10	2	5/8	0.60	1.25	0.11	1.76	0.31	0.42
10	MDDL2-1034F/W	#10	2	3/4	0.60	1.25	0.11	1.89	0.31	0.42
11	MDDL2-1458F/W	1/4	2	5/8	0.60	1.25	0.11	1.86	0.31	0.42
12	MDDL2-1434F/W	1/4	2	3/4	0.60	1.25	0.11	1.99	0.31	0.42
13	MDDL2-1401F/W	1/4	2	1	0.60	1.25	0.11	2.24	0.31	0.42
14	MDDL2-5658F/W	5/16	2	5/8	0.60	1.25	0.11	2.11	0.31	0.42
15	MDDL2-5634F/W	5/16	2	3/4	0.60	1.25	0.11	2.24	0.31	0.42
16	MDDL2-3834F/W	3/8	2	3/4	0.60	1.25	0.11	2.19	0.31	0.42
17	MDDL2-3878F/W	3/8	2	7/8	0.60	1.25	0.11	2.31	0.31	0.42
18	MDDL2-3801F/W	3/8	2	1	0.60	1.25	0.11	2.44	0.31	0.42
19	MDDL2-3843F/W	3/8	2	1-3/4	0.60	1.25	0.11	3.19	0.31	0.42
20	MDDL2-1243F/W	1/2	2	1-3/4	0.83	1.25	0.12	3.61	0.31	0.42
21	MDDL2-38UF/W	3/8	2	3/4-1	0.60	1.25	0.11	2.44	0.31	0.42

Notice: Any dimension difference, please contact us to confirm.

Code Conductor, For 1 AWG Cable

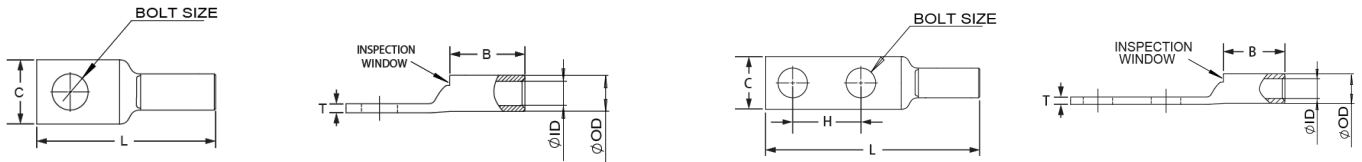
- Cable lugs are connecting devices used primarily for terminating and joining cable and wire conductors in electrical installations and equipment.
- These lugs are used for severe-duty applications and have thicker walls for greater strength and conductivity.
- Suitable for various copper cable and wire types, as long as the correct size is selected and the relevant "crimping" method is used.
- Manufactured from high conductivity copper which is tin plated to prevent corrosion.
- Easy to use in conjunction with mechanical or hydraulic crimping equipment.
- Color-Coded for Easy Identification.



Specifications

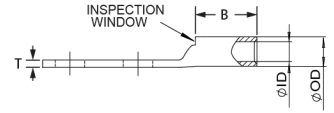
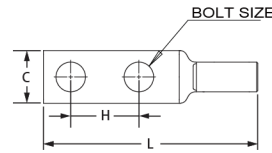
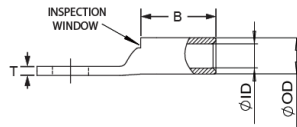
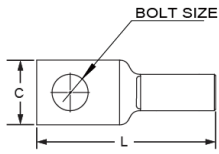
Material	Copper	Tongue Angle	Straight, 45°, 90°
Finish/Coating	Tin-Plated, Nickel-Plated	Barrel Type	Standard, Long, With or Without Inspection Window
Wire Range	1 AWG	Tongue Type	Standard, Narrow
Color Code	Green	Certification	UL, RoHS, ISO9001
Bolt Size	1/4, 5/16, 3/8, 1/2, #10	Customizable	Yes

1 AWG Grounding Lug/Green Printed/Straight Type



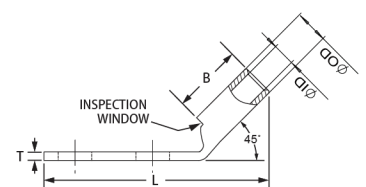
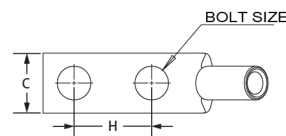
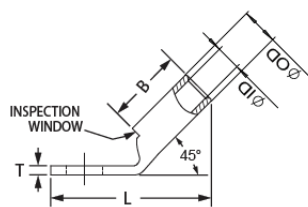
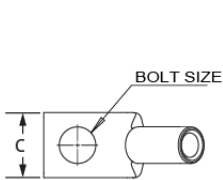
ITEM #	Part No#	BOLT SIZE	Holes	Hole Spacing	Tang Width	Barrel length	Tang Thickness	Over all length	Inner diameter	Outer diameter
			QTY	H (inch)	C (inch)	B (inch)	T (inch)	L (inch)	ID (inch)	OD (inch)
1	MD1-14W	1/4	1	/	0.68	0.88	0.10	1.81	0.36	0.46
2	MD1-56W	5/16	1	/	0.68	0.88	0.10	1.94	0.36	0.46
3	MD1-38W	3/8	1	/	0.68	0.88	0.10	2.06	0.36	0.46
4	MD1-12W	1/2	1	/	0.73	0.88	0.09	2.37	0.36	0.46
5	MD1-10WNT	#10	1	/	0.50	0.88	0.10	2.23	0.36	0.46
6	MD1-14WNT	1/4	1	/	0.50	0.88	0.10	2.23	0.36	0.46
7	MDL1-10/W	#10	1	/	0.68	1.38	0.10	2.27	0.36	0.46
8	MDL1-14/W	1/4	1	/	0.68	1.38	0.10	2.37	0.36	0.46
9	MDL1-56/W	5/16	1	/	0.68	1.38	0.10	2.45	0.36	0.46
10	MDL1-38/W	3/8	1	/	0.68	1.38	0.10	2.56	0.36	0.46
11	MDL1-12/W	1/2	1	/	0.73	1.38	0.09	2.81	0.36	0.46

Notice: Any dimension difference, please contact us to confirm.



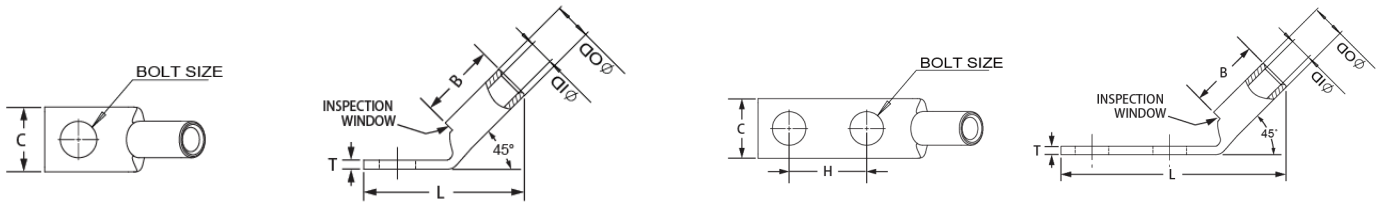
ITEM #	Part No#	BOLT SIZE	Holes	Hole Spacing	Tang Width	Barrel length	Tang Thickness	Over all length	Inner diameter	Outer diameter
			QTY	H (inch)	C (inch)	B (inch)	T (inch)	L (inch)	ID (inch)	OD (inch)
1	MDDS1-1458W	1/4	2	5/8	0.68	0.63	0.10	2.26	0.36	0.46
2	MDDS1-1434W	1/4	2	3/4	0.68	0.63	0.10	2.38	0.36	0.46
3	MDDS1-1401W	1/4	2	1	0.68	0.88	0.10	2.71	0.36	0.46
4	MDDS1-5601W	5/16	2	1	0.68	0.63	0.10	2.71	0.36	0.46
5	MDDS1-3801W	3/8	2	1	0.68	0.63	0.10	2.82	0.36	0.46
6	MDDS1-1243W	1/2	2	1-3/4	0.83	0.63	0.08	4.07	0.36	0.46
7	MDD1-1458W	1/4	2	5/8	0.68	0.88	0.10	2.51	0.36	0.46
8	MDD1-1434W	1/4	2	3/4	0.68	0.88	0.10	2.64	0.36	0.46
9	MDD1-5678W	5/16	2	7/8	0.68	0.88	0.10	2.82	0.36	0.46
10	MDD1-3801W	3/8	2	1	0.68	0.88	0.10	3.07	0.36	0.46
11	MDD1-1243W	1/2	2	1-3/4	0.83	0.88	0.12	4.32	0.36	0.46
12	MDDS1-1458WNT	1/4	2	5/8	0.48	0.63	0.10	2.26	0.36	0.46
13	MDD1-1458WNT	1/4	2	5/8	0.50	0.88	0.10	2.55	0.36	0.46
14	MDD1-1434WNT	1/4	2	3/4	0.50	0.88	0.10	2.68	0.36	0.46
15	MDDL1-1458WNT	1/4	2	5/8	0.50	1.38	0.13	2.87	0.36	0.46
16	MDDL1-1434WNT	1/4	2	3/4	0.50	1.38	0.13	3.14	0.36	0.46
17	MDDL1-1458/W	1/4	2	5/8	0.67	1.38	0.10	3.01	0.36	0.46
18	MDDL1-1434/W	1/4	2	3/4	0.67	1.38	0.10	3.13	0.36	0.46
19	MDDL1-1401/W	1/4	2	1	0.67	1.38	0.10	3.38	0.36	0.46
20	MDDL1-3801/W	3/8	2	1	0.67	1.38	0.10	3.57	0.36	0.46
21	MDDL1-1243/W	1/2	2	1-3/4	0.83	1.38	0.12	4.82	0.36	0.46

1 AWG Grounding Lug/Green Printed/45° Angle



ITEM #	Part No#	BOLT SIZE	Holes	Hole Spacing	Tang Width	Barrel length	Tang Thickness	Over all length	Inner diameter	Outer diameter
			QTY	H (inch)	C (inch)	B (inch)	T (inch)	L (inch)	ID (inch)	OD (inch)
1	MD1-14HW	1/4	1	/	0.68	0.88	0.10	1.50	0.36	0.46

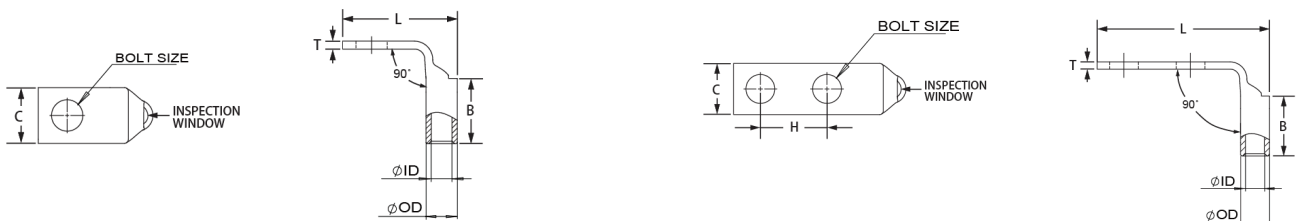
Notice: Any dimension difference, please contact us to confirm.



ITEM #	Part No#	BOLT SIZE	Holes	Hole Spacing	Tang Width	Barrel length	Tang Thickness	Over all length	Inner diameter	Outer diameter
			QTY	H (inch)	C (inch)	B (inch)	T (inch)	L (inch)	ID (inch)	OD (inch)
2	MD1-56HW	5/16	1	/	0.68	0.88	0.10	1.62	0.36	0.46
3	MD1-38HW	3/8	1	/	0.68	0.88	0.10	1.70	0.36	0.46
4	MD1-12HW	1/2	1	/	0.73	0.88	0.09	1.93	0.36	0.46
5	MDL1-10H/W	#10	1	/	0.68	1.38	0.10	1.83	0.36	0.46
6	MDL1-14H/W	1/4	1	/	0.68	1.38	0.10	2.03	0.36	0.46
7	MDL1-56H/W	5/16	1	/	0.68	1.38	0.10	2.03	0.36	0.46

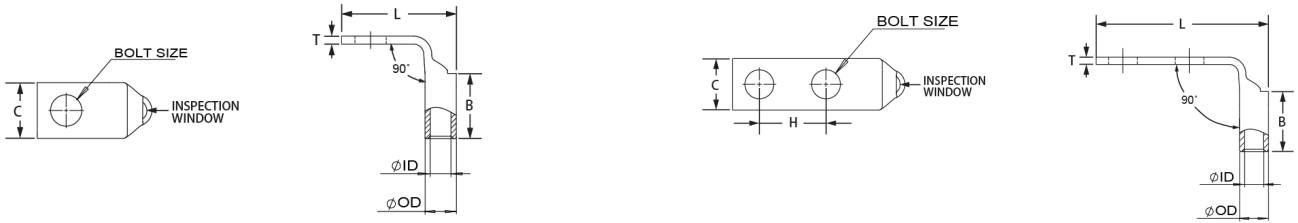
ITEM #	Part No#	BOLT SIZE	Holes	Hole Spacing	Tang Width	Barrel length	Tang Thickness	Over all length	Inner diameter	Outer diameter
			QTY	H (inch)	C (inch)	B (inch)	T (inch)	L (inch)	ID (inch)	OD (inch)
1	MDD1-1458HW	1/4	2	5/8	0.68	0.88	0.10	2.12	0.36	0.46
2	MDD1-1434HW	1/4	2	3/4	0.68	0.88	0.10	2.25	0.36	0.46
3	MDD1-5678HW	5/16	2	7/8	0.68	0.88	0.10	2.50	0.36	0.46
4	MDD1-3801HW	3/8	2	1	0.68	0.88	0.10	2.70	0.36	0.46
5	MDD1-1243HW	1/2	2	1-3/4	0.83	0.88	0.12	3.87	0.36	0.46
6	MDDL1-1458H/W	1/4	2	5/8	0.67	1.38	0.10	2.46	0.36	0.46
7	MDDL1-1434H/W	1/4	2	3/4	0.67	1.38	0.10	2.58	0.36	0.46
8	MDDL1-5678H/W	5/16	2	7/8	0.67	1.38	0.10	2.99	0.36	0.46
9	MDDL1-5601H/W	5/16	2	1	0.67	1.38	0.10	3.12	0.36	0.46
10	MDDL1-3801H/W	3/8	2	1	0.67	1.38	0.10	3.04	0.36	0.46
11	MDDL1-1243H/W	1/2	2	1-3/4	0.83	1.38	0.12	4.20	0.36	0.46

1 AWG Grounding Lug/Green Printed/90° Angle



ITEM #	Part No#	BOLT SIZE	Holes	Hole Spacing	Tang Width	Barrel length	Tang Thickness	Over all length	Inner diameter	Outer diameter
			QTY	H (inch)	C (inch)	B (inch)	T (inch)	L (inch)	ID (inch)	OD (inch)
1	MD1-14FW	1/4	1	/	0.68	0.88	0.10	1.31	0.36	0.46

Notice: Any dimension difference, please contact us to confirm.



ITEM #	Part No#	BOLT SIZE	Holes	Hole Spacing	Tang Width	Barrel length	Tang Thickness	Over all length	Inner diameter	Outer diameter
			QTY	H (inch)	C (inch)	B (inch)	T (inch)	L (inch)	ID (inch)	OD (inch)
2	MD1-56FW	5/16	1	/	0.68	0.88	0.10	1.44	0.36	0.46
3	MD1-38FW	3/8	1	/	0.68	0.88	0.10	1.51	0.36	0.46
4	MD1-12FW	1/2	1	/	0.73	0.88	0.09	1.65	0.36	0.46
5	MDL1-10F/W	#10	1	/	0.68	1.38	0.10	2.00	0.36	0.46
6	MDL1-14F/W	1/4	1	/	0.68	1.38	0.10	2.00	0.36	0.46
7	MDL1-56F/W	5/16	1	/	0.68	1.38	0.10	2.00	0.36	0.46

ITEM #	Part No#	BOLT SIZE	Holes	Hole Spacing	Tang Width	Barrel length	Tang Thickness	Over all length	Inner diameter	Outer diameter
			QTY	H (inch)	C (inch)	B (inch)	T (inch)	L (inch)	ID (inch)	OD (inch)
1	MDD1-1458HW	1/4	2	5/8	0.68	0.88	0.10	2.12	0.36	0.46
2	MDD1-1434HW	1/4	2	3/4	0.68	0.88	0.10	2.25	0.36	0.46
3	MDD1-5678HW	5/16	2	7/8	0.68	0.88	0.10	2.50	0.36	0.46
4	MDD1-3801HW	3/8	2	1	0.68	0.88	0.10	2.70	0.36	0.46
5	MDD1-1243HW	1/2	2	1-3/4	0.83	0.88	0.12	3.87	0.36	0.46
6	MDDL1-1458H/W	1/4	2	5/8	0.67	1.38	0.10	2.46	0.36	0.46
7	MDDL1-1434H/W	1/4	2	3/4	0.67	1.38	0.10	2.58	0.36	0.46
8	MDDL1-5678H/W	5/16	2	7/8	0.67	1.38	0.10	2.99	0.36	0.46
9	MDDL1-5601H/W	5/16	2	1	0.67	1.38	0.10	3.12	0.36	0.46
10	MDDL1-3801H/W	3/8	2	1	0.67	1.38	0.10	3.04	0.36	0.46
11	MDDL1-1243H/W	1/2	2	1-3/4	0.83	1.38	0.12	4.20	0.36	0.46

Notice: Any dimension difference, please contact us to confirm.

Code Conductor, For 1/0 AWG Cable

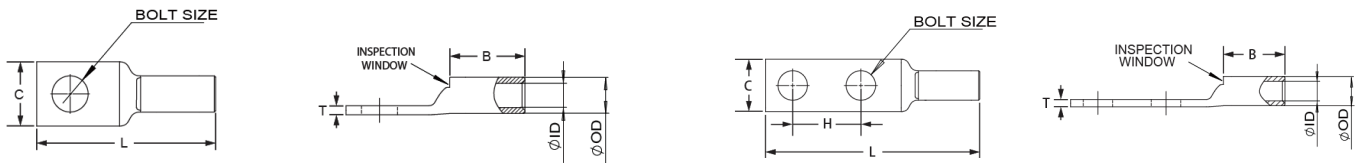
- Cable lugs are connecting devices used primarily for terminating and joining cable and wire conductors in electrical installations and equipment.
- These lugs are used for severe-duty applications and have thicker walls for greater strength and conductivity.
- Suitable for various copper cable and wire types, as long as the correct size is selected and the relevant "crimping" method is used.
- Manufactured from high conductivity copper which is tin plated to prevent corrosion.
- Easy to use in conjunction with mechanical or hydraulic crimping equipment.
- Color-Coded for Easy Identification.



Specifications

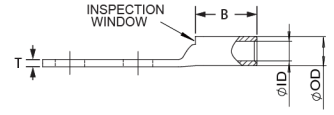
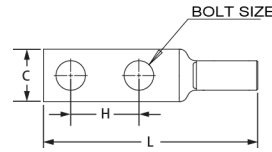
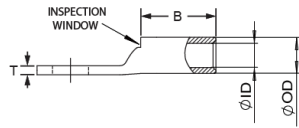
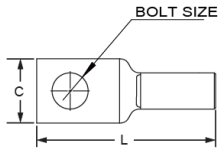
Material	Copper	Tongue Angle	Straight, 45°, 90°
Finish/Coating	Tin-Plated, Nickel-Plated	Barrel Type	Standard, Long, With or Without Inspection Window
Wire Range	1/0 AWG	Tongue Type	Standard, Narrow
Color Code	Pink	Certification	UL, RoHS, ISO9001
Bolt Size	1/4, 5/16, 3/8, 1/2, #10	Customizable	Yes

1/0 AWG Grounding Lug/Pink Printed/Straight Type



ITEM #	Part No#	BOLT SIZE	Holes	Hole Spacing	Tang Width	Barrel length	Tang Thickness	Over all length	Inner diameter	Outer diameter
			QTY	H (inch)	C (inch)	B (inch)	T (inch)	L (inch)	ID (inch)	OD (inch)
1	MD1/0-14W	1/4	1	/	0.75	0.88	0.12	1.84	0.39	0.52
2	MD1/0-56W	5/16	1	/	0.75	0.88	0.12	1.96	0.39	0.52
3	MD1/0-38W	3/8	1	/	0.75	0.88	0.12	2.09	0.39	0.52
4	MD1/0-12W	1/2	1	/	0.75	0.88	0.12	2.34	0.39	0.52
5	MD1/0-10WNT	#10	1	/	0.62	0.88	0.12	2.28	0.39	0.52
6	MD1/0-14WNT	1/4	1	/	0.48	0.88	0.12	1.93	0.39	0.52
7	MD1/0-56WNT	5/16	1	/	0.62	0.88	0.12	2.28	0.39	0.52
8	MD1/0-38WNT	3/8	1	/	0.62	0.88	0.12	2.18	0.39	0.52
9	MDL1/0-10/W	#10	1	/	0.75	1.38	0.12	2.30	0.39	0.52
10	MDL1/0-14/W	1/4	1	/	0.75	1.38	0.12	2.40	0.39	0.52

Notice: Any dimension difference, please contact us to confirm.

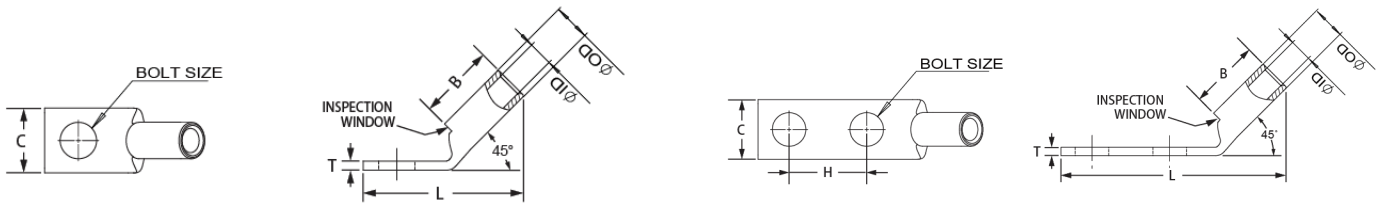


ITEM #	Part No#	BOLT SIZE	Holes	Hole Spacing	Tang Width	Barrel length	Tang Thickness	Over all length	Inner diameter	Outer diameter
			QTY	H (inch)	C (inch)	B (inch)	T (inch)	L (inch)	ID (inch)	OD (inch)
11	MDL1/0-56/W	5/16	1	/	0.75	1.38	0.12	2.46	0.39	0.52
12	MDL1/0-38/W	3/8	1	/	0.75	1.38	0.12	2.59	0.39	0.52
13	MDL1/0-12/W	1/2	1	/	0.75	1.38	0.12	2.84	0.39	0.52

ITEM #	Part No#	BOLT SIZE	Holes	Hole Spacing	Tang Width	Barrel length	Tang Thickness	Over all length	Inner diameter	Outer diameter
			QTY	H (inch)	C (inch)	B (inch)	T (inch)	L (inch)	ID (inch)	OD (inch)
1	MDD1/0-1458W	1/4	2	5/8	0.75	0.88	0.12	2.54	0.39	0.52
2	MDD1/0-1434W	1/4	2	3/4	0.75	0.88	0.12	2.66	0.39	0.52
3	MDD1/0-1401W	1/4	2	1	0.75	0.88	0.12	2.91	0.39	0.52
4	MDD1/0-5678W	5/16	2	7/8	0.75	0.88	0.12	2.85	0.39	0.52
5	MDD1/0-3801W	3/8	2	1	0.75	0.88	0.12	3.10	0.39	0.52
6	MDD1/0-1243W	1/2	2	1-3/4	0.83	0.88	0.11	4.29	0.39	0.52
7	MDD1/0-1458WNT	1/4	2	5/8	0.52	0.88	0.12	2.56	0.39	0.52
8	MDD1/0-1401WNT	1/4	2	1	0.52	0.88	0.12	3.28	0.39	0.52
9	MDDL1/0-1458/W	1/4	2	5/8	0.75	1.38	0.12	3.04	0.39	0.52
10	MDDL1/0-1434/W	1/4	2	3/4	0.75	1.38	0.12	3.16	0.39	0.52
11	MDDL1/0-1401/W	1/4	2	1	0.75	1.38	0.12	3.41	0.39	0.52
12	MDDL1/0-5601/W	5/16	2	1	0.75	1.38	0.12	3.49	0.39	0.52
13	MDDL1/0-5678/W	5/16	2	7/8	0.75	1.38	0.12	3.35	0.39	0.52
14	MDDL1/0-5601/W	5/16	2	1	0.75	1.38	0.12	3.47	0.39	0.52
15	MDDL1/0-3801/W	3/8	2	1	0.75	1.38	0.12	3.60	0.39	0.52
16	MDDL1/0-3843/W	3/8	2	1-3/4	0.75	1.38	0.12	4.35	0.39	0.52
17	MDDL1/0-1243/W	1/2	2	1-3/4	0.83	1.38	0.11	4.79	0.39	0.52

Notice: Any dimension difference, please contact us to confirm.

1/0 AWG Grounding Lug/Pink Printed/45° Angle

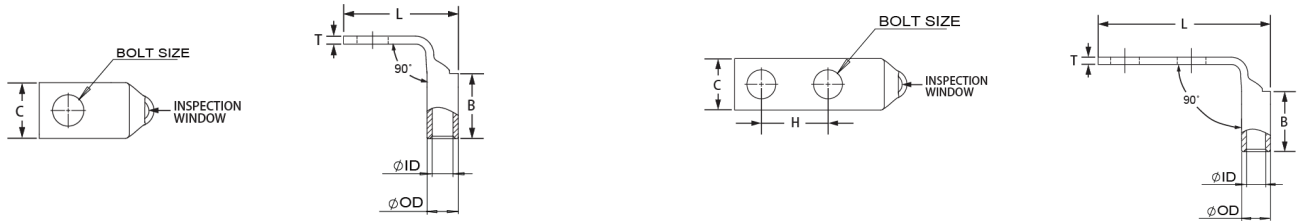


ITEM #	Part No#	BOLT SIZE	Holes	Hole Spacing	Tang Width	Barrel length	Tang Thickness	Over all length	Inner diameter	Outer diameter
			QTY	H (inch)	C (inch)	B (inch)	T (inch)	L (inch)	ID (inch)	OD (inch)
1	MD1/0-14HW	1/4	1	/	0.75	0.88	0.12	1.63	0.39	0.52
2	MD1/0-56HW	5/16	1	/	0.75	0.88	0.12	1.69	0.39	0.52
3	MD1/0-38HW	3/8	1	/	0.75	0.88	0.12	1.76	0.39	0.52
4	MD1/0-12HW	1/2	1	/	0.75	0.88	0.12	1.99	0.39	0.52
5	MDL1/0-10H/W	#10	1	/	0.75	1.38	0.12	1.92	0.39	0.52
6	MDL1/0-56H/W	5/16	1	/	0.75	1.38	0.13	2.12	0.39	0.52
7	MDL1/0-38H/W	3/8	1	/	0.75	1.38	0.12	2.19	0.39	0.52
8	MDL1/0-12H/W	1/2	1	/	0.83	1.38	0.11	2.42	0.39	0.52

ITEM #	Part No#	BOLT SIZE	Holes	Hole Spacing	Tang Width	Barrel length	Tang Thickness	Over all length	Inner diameter	Outer diameter
			QTY	H (inch)	C (inch)	B (inch)	T (inch)	L (inch)	ID (inch)	OD (inch)
1	MDD1/0-1458HW	1/4	2	5/8	0.75	0.88	0.12	2.26	0.39	0.52
2	MDD1/0-1434HW	1/4	2	3/4	0.75	0.88	0.12	2.38	0.39	0.52
3	MDD1/0-5678HW	5/16	2	7/8	0.75	0.88	0.12	2.56	0.39	0.52
4	MDD1/0-3801HW	3/8	2	1	0.75	0.88	0.12	2.72	0.39	0.52
5	MDD1/0-1243HW	1/2	2	1-3/4	0.83	0.88	0.11	3.93	0.39	0.52
6	MDD1/0-1401HWNT	1/4	2	1	0.48	0.88	0.12	2.60	0.39	0.52
7	MDD1/0-5601HWNT	5/16	2	1	0.48	0.88	0.12	2.67	0.39	0.52
8	MDDL1/0-1458H/W	1/4	2	5/8	0.75	1.38	0.12	2.64	0.39	0.52
9	MDDL1/0-1434H/W	1/4	2	3/4	0.75	1.38	0.12	2.76	0.39	0.52
10	MDDL1/0-1401H/W	1/4	2	1	0.75	1.38	0.12	3.02	0.39	0.52
11	MDDL1/0-5678H/W	5/16	2	7/8	0.75	1.38	0.12	2.99	0.39	0.52
12	MDDL1/0-3801H/W	3/8	2	1	0.75	1.38	0.12	3.14	0.39	0.52
13	MDDL1/0-3843H/W	3/8	2	1-3/4	0.75	1.38	0.12	3.89	0.39	0.52
14	MDDL1/0-1201H/W	1/2	2	1	0.83	1.38	0.11	3.46	0.39	0.52
15	MDDL1/0-1243H/W	1/2	2	1-3/4	0.83	1.38	0.11	4.32	0.39	0.52

Notice: Any dimension difference, please contact us to confirm.

1/0 AWG Grounding Lug/Pink Printed/90° Angle



ITEM #	Part No#	BOLT SIZE	Holes	Hole Spacing	Tang Width	Barrel length	Tang Thickness	Over all length	Inner diameter	Outer diameter
			QTY	H (inch)	C (inch)	B (inch)	T (inch)	L (inch)	ID (inch)	OD (inch)
1	MD1/0-14FW	1/4	1	/	0.75	0.88	0.12	1.45	0.39	0.52
2	MD1/0-56FW	5/16	1	/	0.75	0.88	0.12	1.51	0.39	0.52
3	MD1/0-38FW	3/8	1	/	0.75	0.88	0.12	1.58	0.39	0.52
4	MD1/0-12FW	1/2	1	/	0.75	0.88	0.12	1.82	0.39	0.52
5	MDL1/0-10F/W	#10	1	/	0.75	1.38	0.12	2.15	0.39	0.52
6	MDL1/0-56F/W	5/16	1	/	0.75	1.38	0.13	2.15	0.39	0.52
7	MDL1/0-38F/W	3/8	1	/	0.75	1.38	0.12	2.15	0.39	0.52
8	MDL1/0-12F/W	1/2	1	/	0.83	1.38	0.11	2.15	0.39	0.52

ITEM #	Part No#	BOLT SIZE	Holes	Hole Spacing	Tang Width	Barrel length	Tang Thickness	Over all length	Inner diameter	Outer diameter
			QTY	H (inch)	C (inch)	B (inch)	T (inch)	L (inch)	ID (inch)	OD (inch)
1	MDD1/0-1458FW	1/4	2	5/8	0.75	0.88	0.12	2.08	0.39	0.52
2	MDD1/0-1434FW	1/4	2	3/4	0.75	0.88	0.12	2.20	0.39	0.52
3	MDD1/0-5678FW	5/16	2	7/8	0.75	0.88	0.12	2.38	0.39	0.52
4	MDD1/0-3801FW	3/8	2	1	0.75	0.88	0.12	2.58	0.39	0.52
5	MDD1/0-1243FW	1/2	2	1-3/4	0.83	0.88	0.11	3.75	0.39	0.52
6	MDD1/0-1401FWNT	1/4	2	1	0.48	0.88	0.12	2.45	0.39	0.52
7	MDD1/0-5601FWNT	5/16	2	1	0.48	0.88	0.12	2.51	0.39	0.52
8	MDDL1/0-1458F/W	1/4	2	5/8	0.75	1.38	0.12	2.08	0.39	0.52
9	MDDL1/0-1434F/W	1/4	2	3/4	0.75	1.38	0.12	2.20	0.39	0.52
10	MDDL1/0-1401F/W	1/4	2	1	0.75	1.38	0.12	2.45	0.39	0.52
11	MDDL1/0-5601F/W	5/16	2	1	0.75	1.38	0.12	2.51	0.39	0.52
12	MDDL1/0-3801F/W	3/8	2	1	0.75	1.38	0.12	2.58	0.39	0.52
13	MDDL1/0-3843F/W	3/8	2	1-3/4	0.75	1.38	0.12	3.33	0.39	0.52
14	MDDL1/0-1201F/W	1/2	2	1	0.83	1.38	0.11	2.85	0.39	0.52
15	MDDL1/0-1243F/W	1/2	2	1-3/4	0.83	1.38	0.11	3.75	0.39	0.52

Notice: Any dimension difference, please contact us to confirm.

Code Conductor, For 2/0 AWG Cable

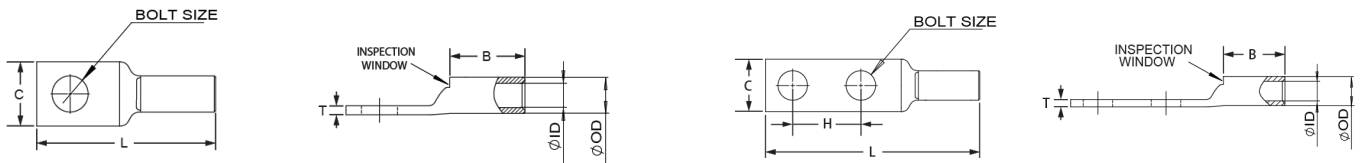
- Cable lugs are connecting devices used primarily for terminating and joining cable and wire conductors in electrical installations and equipment.
- These lugs are used for severe-duty applications and have thicker walls for greater strength and conductivity.
- Suitable for various copper cable and wire types, as long as the correct size is selected and the relevant "crimping" method is used.
- Manufactured from high conductivity copper which is tin plated to prevent corrosion.
- Easy to use in conjunction with mechanical or hydraulic crimping equipment.
- Color-Coded for Easy Identification.



Specifications

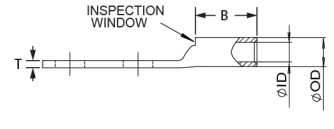
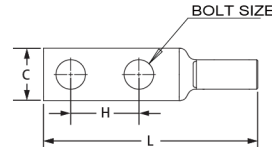
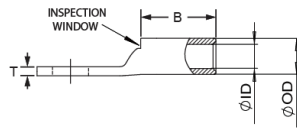
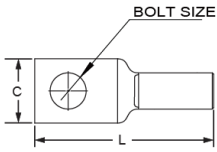
Material	Copper	Tongue Angle	Straight, 45°, 90°
Finish/Coating	Tin-Plated, Nickel-Plated	Barrel Type	Standard, Long, With or Without Inspection Window
Wire Range	2/0 AWG	Tongue Type	Standard, Narrow
Color Code	Black	Certification	UL, RoHS, ISO9001
Bolt Size	1/4, 5/16, 3/8, 1/2, #10	Customizable	Yes

2/0 AWG Grounding Lug/Black Printed/Straight Type



ITEM #	Part No#	BOLT SIZE	Holes	Hole Spacing	Tang Width	Barrel length	Tang Thickness	Over all length	Inner diameter	Outer diameter
			QTY	H (inch)	C (inch)	B (inch)	T (inch)	L (inch)	ID (inch)	OD (inch)
1	MD2/0-14/W	1/4	1	/	0.83	0.94	0.12	1.94	0.45	0.56
2	MD2/0-38/W	3/8	1	/	0.83	0.94	0.12	2.36	0.45	0.56
3	MD2/0-12/W	1/2	1	/	0.83	0.94	0.12	2.44	0.45	0.56
4	MD2/0-34/W	3/4	1	/	1.02	0.94	0.10	2.96	0.45	0.56
5	MD2/0-10/WNT	#10	1	/	0.62	0.94	0.13	2.62	0.45	0.56
6	MD2/0-14/WNT	1/4	1	/	0.48	0.94	0.12	2.02	0.45	0.56
7	MD2/0-56/WNT	5/16	1	/	0.62	0.94	0.13	2.06	0.45	0.56
8	MD2/0-38/WNT	3/8	1	/	0.72	0.94	0.12	2.48	0.45	0.56
9	MDL2/0-14/W	1/4	1	/	0.83	1.50	0.12	2.56	0.45	0.56
10	MDL2/0-56/W	5/16	1	/	0.83	1.50	0.12	2.65	0.45	0.56

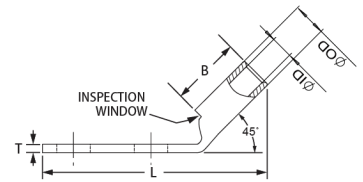
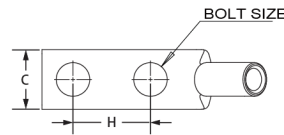
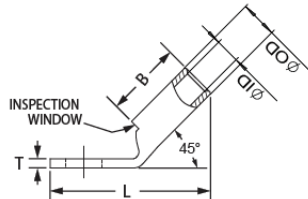
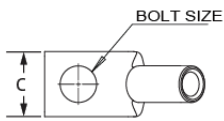
Notice: Any dimension difference, please contact us to confirm.



ITEM #	Part No#	BOLT SIZE	Holes	Hole Spacing	Tang Width	Barrel length	Tang Thickness	Over all length	Inner diameter	Outer diameter
			QTY	H (inch)	C (inch)	B (inch)	T (inch)	L (inch)	ID (inch)	OD (inch)
11	MDL2/0-38/W	3/8	1	/	0.83	1.50	0.12	2.75	0.45	0.56
12	MDL2/0-12/W	1/2	1	/	0.83	1.50	0.12	3.00	0.45	0.56

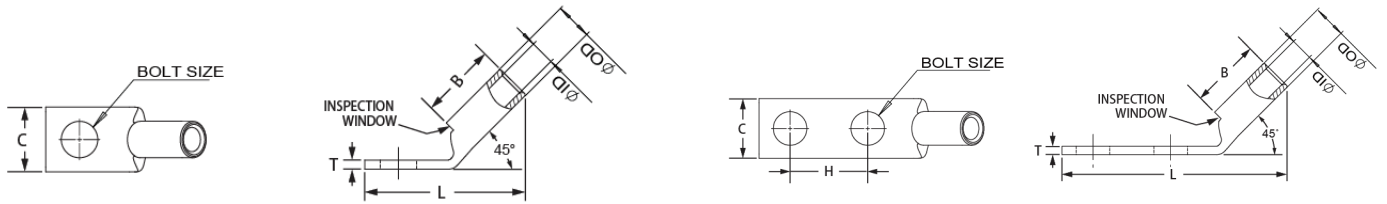
ITEM #	Part No#	BOLT SIZE	Holes	Hole Spacing	Tang Width	Barrel length	Tang Thickness	Over all length	Inner diameter	Outer diameter
			QTY	H (inch)	C (inch)	B (inch)	T (inch)	L (inch)	ID (inch)	OD (inch)
1	MDD2/0-1458/W	1/4	2	5/8	0.83	0.94	0.12	2.64	0.45	0.56
2	MDD2/0-1434/W	1/4	2	3/4	0.83	0.94	0.12	2.76	0.45	0.56
3	MDD2/0-1401/W	1/4	2	1	0.83	0.94	0.12	3.01	0.45	0.56
4	MDD2/0-5678/W	5/16	2	7/8	0.83	0.94	0.12	2.95	0.45	0.56
5	MDD2/0-3801/W	3/8	2	1	0.83	0.94	0.12	3.20	0.45	0.56
6	MDD2/0-1243/W	1/2	2	1-3/4	0.83	0.94	0.12	4.39	0.45	0.56
7	MDD2/0-1458/WNT	1/4	2	5/8	0.56	0.94	0.12	2.66	0.45	0.56
8	MDD2/0-1401/WNT	1/4	2	1	0.56	0.94	0.12	3.03	0.45	0.56
9	MDDL2/0-1458/WNT	1/4	2	5/8	0.48	1.50	0.12	3.35	0.45	0.56
10	MDDL2/0-1458/W	1/4	2	5/8	0.83	1.50	0.12	3.20	0.45	0.56
11	MDDL2/0-1434/W	1/4	2	3/4	0.83	1.50	0.12	3.32	0.45	0.56
12	MDDL2/0-1401/W	1/4	2	1	0.83	1.50	0.12	3.57	0.45	0.56
13	MDDL2/0-3801/W	3/8	2	1	0.83	1.50	0.12	3.76	0.45	0.56
14	MDDL2/0-3843/W	3/8	2	1-3/4	0.83	1.50	0.12	4.51	0.45	0.56
15	MDDL2/0-1243/W	1/2	2	1-3/4	0.83	1.50	0.12	4.95	0.45	0.56

2/0 AWG Grounding Lug/Black Printed/45° Angle



ITEM #	Part No#	BOLT SIZE	Holes	Hole Spacing	Tang Width	Barrel length	Tang Thickness	Over all length	Inner diameter	Outer diameter
			QTY	H (inch)	C (inch)	B (inch)	T (inch)	L (inch)	ID (inch)	OD (inch)
1	MD2/0-14H/W	1/4	1	/	0.83	0.94	0.12	1.77	0.45	0.56
2	MD2/0-38H/W	3/8	1	/	0.83	0.94	0.12	1.83	0.45	0.56
3	MD2/0-12H/W	1/2	1	/	0.83	0.94	0.12	2.08	0.45	0.56
4	MD2/0-34H/W	3/4	1	/	1.02	0.94	0.10	2.66	0.45	0.56

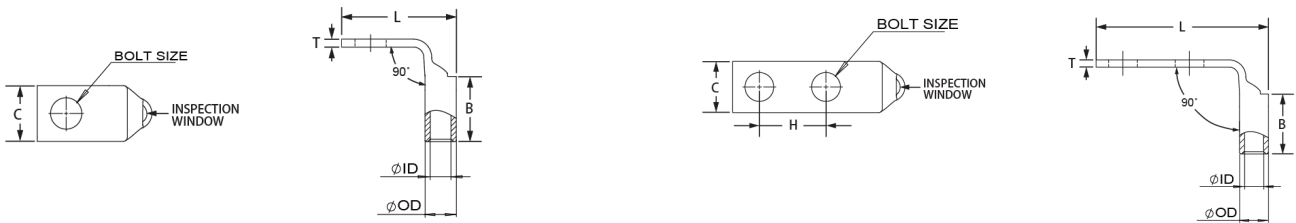
Notice: Any dimension difference, please contact us to confirm.



ITEM #	Part No#	BOLT SIZE	Holes	Hole Spacing	Tang Width	Barrel length	Tang Thickness	Over all length	Inner diameter	Outer diameter
			QTY	H (inch)	C (inch)	B (inch)	T (inch)	L (inch)	ID (inch)	OD (inch)
5	MDL2/0-38H/W	3/8	1	/	0.83	1.50	0.12	2.31	0.45	0.56
6	MDL2/0-12H/W	1/2	1	/	0.83	1.50	0.12	2.53	0.45	0.56

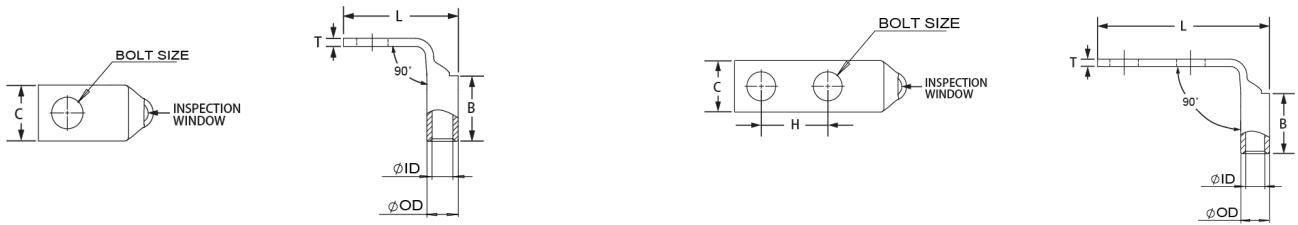
ITEM #	Part No#	BOLT SIZE	Holes	Hole Spacing	Tang Width	Barrel length	Tang Thickness	Over all length	Inner diameter	Outer diameter
			QTY	H (inch)	C (inch)	B (inch)	T (inch)	L (inch)	ID (inch)	OD (inch)
1	MDD2/0-1458H/W	1/4	2	5/8	0.83	0.94	0.12	2.38	0.45	0.56
2	MDD2/0-1434H/W	1/4	2	3/4	0.83	0.94	0.12	2.52	0.45	0.56
3	MDD2/0-5678H/W	5/16	2	7/8	0.83	0.94	0.12	2.64	0.45	0.56
4	MDD2/0-3801H/W	3/8	2	1	0.83	0.94	0.12	2.83	0.45	0.56
5	MDD2/0-1243H/W	1/2	2	1-3/4	0.83	0.94	0.12	3.99	0.45	0.56
6	MDDL2/0-1458H/W	1/4	2	5/8	0.83	1.50	0.12	2.76	0.45	0.56
7	MDDL2/0-1434H/W	1/4	2	3/4	0.83	1.50	0.12	2.88	0.45	0.56
8	MDDL2/0-1401H/W	1/4	2	1	0.83	1.50	0.12	3.13	0.45	0.56
9	MDDL2/0-5601H/W	5/16	2	1	0.83	1.50	0.12	3.24	0.45	0.56
10	MDDL2/0-3801H/W	3/8	2	1	0.83	1.50	0.12	3.20	0.45	0.56
11	MDDL2/0-3843H/W	3/8	2	1-3/4	0.83	1.50	0.12	3.95	0.45	0.56
12	MDDL2/0-1201H/W	1/2	2	1	0.83	1.50	0.12	3.56	0.45	0.56
13	MDDL2/0-1243H/W	1/2	2	1-3/4	0.83	1.50	0.12	4.36	0.45	0.56

2/0 AWG Grounding Lug/Black Printed/90° Angle



ITEM #	Part No#	BOLT SIZE	Holes	Hole Spacing	Tang Width	Barrel length	Tang Thickness	Over all length	Inner diameter	Outer diameter
			QTY	H (inch)	C (inch)	B (inch)	T (inch)	L (inch)	ID (inch)	OD (inch)
1	MD2/0-14FW	1/4	1	/	0.83	0.94	0.12	1.59	0.45	0.56
2	MD2/0-56FW	5/16	1	/	0.83	0.80	0.12	1.59	0.45	0.56
3	MD2/0-38FW	3/8	1	/	0.83	0.94	0.12	1.66	0.45	0.56
4	MD2/0-12FW	1/2	1	/	0.83	0.94	0.12	1.66	0.45	0.56

Notice: Any dimension difference, please contact us to confirm.



ITEM #	Part No#	BOLT SIZE	Holes	Hole Spacing	Tang Width	Barrel length	Tang Thickness	Over all length	Inner diameter	Outer diameter
			QTY	H (inch)	C (inch)	B (inch)	T (inch)	L (inch)	ID (inch)	OD (inch)
5	MD2/0-34FW	3/4	1	/	1.02	0.94	0.10	1.91	0.45	0.56
6	MDL2/0-38F/W	3/8	1	/	0.83	1.50	0.12	2.30	0.45	0.56

ITEM #	Part No#	BOLT SIZE	Holes	Hole Spacing	Tang Width	Barrel length	Tang Thickness	Over all length	Inner diameter	Outer diameter
			QTY	H (inch)	C (inch)	B (inch)	T (inch)	L (inch)	ID (inch)	OD (inch)
1	MDD2/0-1458FW	1/4	2	5/8	0.83	0.94	0.12	2.22	0.45	0.56
2	MDD2/0-1434FW	1/4	2	3/4	0.83	0.94	0.12	2.34	0.45	0.56
3	MDD2/0-5678FW	5/16	2	7/8	0.83	0.94	0.12	2.47	0.45	0.56
4	MDD2/0-3801FW	3/8	2	1	0.83	0.94	0.12	2.66	0.45	0.56
5	MDD2/0-1243FW	1/2	2	1-3/4	0.83	0.94	0.12	3.82	0.45	0.56
6	MDDL2/0-1458F/W	1/4	2	5/8	0.83	1.50	0.12	2.22	0.45	0.56
7	MDDL2/0-1434F/W	1/4	2	3/4	0.83	1.50	0.12	2.34	0.45	0.56
8	MDDL2/0-1401F/W	5/16	2	1	0.83	1.50	0.12	2.59	0.45	0.56
9	MDDL2/0-5601F/W	5/16	2	1	0.83	1.50	0.12	2.59	0.45	0.56
10	MDDL2/0-3801F/W	3/8	2	1	0.83	1.50	0.12	2.66	0.45	0.56
11	MDDL2/0-3843F/W	1/2	2	1-3/4	0.83	1.50	0.12	2.91	0.45	0.56
12	MDDL2/0-1201F/W	1/2	2	1	0.83	1.50	0.12	2.85	0.45	0.56
13	MDDL2/0-1243F/W	1/2	2	1-3/4	0.83	1.50	0.12	3.82	0.45	0.56

Notice: Any dimension difference, please contact us to confirm.

Code Conductor, For 3/0 AWG Cable

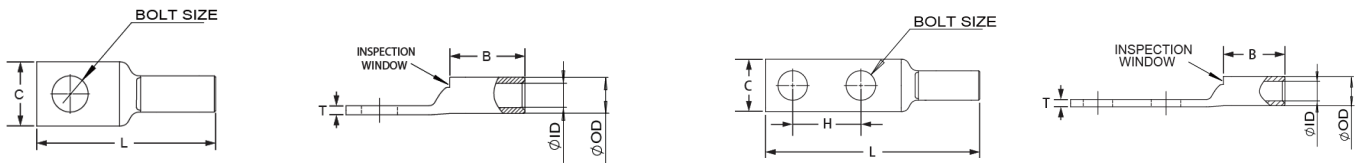
- Cable lugs are connecting devices used primarily for terminating and joining cable and wire conductors in electrical installations and equipment.
- These lugs are used for severe-duty applications and have thicker walls for greater strength and conductivity.
- Suitable for various copper cable and wire types, as long as the correct size is selected and the relevant "crimping" method is used.
- Manufactured from high conductivity copper which is tin plated to prevent corrosion.
- Easy to use in conjunction with mechanical or hydraulic crimping equipment.
- Color-Coded for Easy Identification.



Specifications

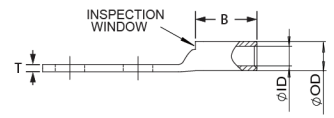
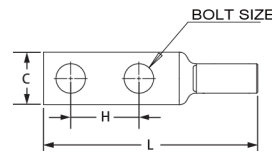
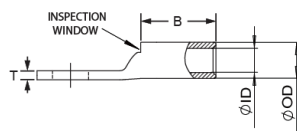
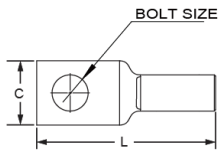
Material	Copper	Tongue Angle	Straight, 45°, 90°
Finish/Coating	Tin-Plated, Nickel-Plated	Barrel Type	Standard, Long, With or Without Inspection Window
Wire Range	3/0 AWG	Tongue Type	Standard, Narrow
Color Code	Orange	Certification	UL, RoHS, ISO9001
Bolt Size	1/4, 5/16, 3/8, 1/2	Customizable	Yes

3/0 AWG Grounding Lug/Orange Printed/Straight Type



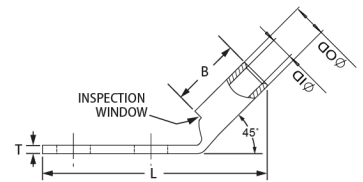
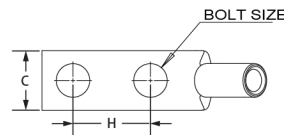
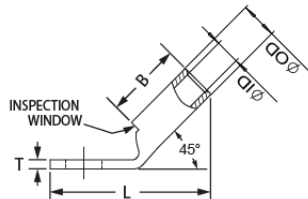
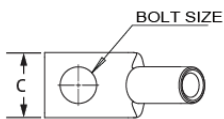
ITEM #	Part No#	BOLT SIZE	Holes	Hole Spacing	Tang Width	Barrel length	Tang Thickness	Over all length	Inner diameter	Outer diameter
			QTY	H (inch)	C (inch)	B (inch)	T (inch)	L (inch)	ID (inch)	OD (inch)
1	MD3/0-56W	5/16	1	/	0.91	1.14	0.13	2.21	0.51	0.63
2	MD3/0-38W	3/8	1	/	0.91	1.00	0.13	2.20	0.51	0.63
3	MD3/0-12W	1/2	1	/	0.91	1.00	0.13	2.21	0.51	0.63
4	MD3/0-14WNT	1/4	1	/	0.64	1.00	0.13	2.16	0.51	0.63
5	MD3/0-56WNT	5/16	1	/	0.64	1.00	0.12	2.17	0.51	0.63
6	MD3/0-38WNT	3/8	1	/	0.72	1.00	0.13	2.64	0.51	0.63
7	MD3/0-12WNT	1/2	1	/	0.77	1.00	0.13	2.64	0.51	0.63
8	MDL3/0-38/W	3/8	1	/	0.91	1.50	0.13	2.87	0.51	0.63
9	MDL3/0-12/W	1/2	1	/	0.91	1.50	0.13	3.12	0.51	0.63

Notice: Any dimension difference, please contact us to confirm.



ITEM #	Part No#	BOLT SIZE	Holes	Hole Spacing	Tang Width	Barrel length	Tang Thickness	Over all length	Inner diameter	Outer diameter
			QTY	H (inch)	C (inch)	B (inch)	T (inch)	L (inch)	ID (inch)	OD (inch)
1	MDD3/0-1434W	1/4	2	3/4	0.91	1.00	0.13	2.86	0.51	0.63
2	MDD3/0-5601W	5/16	2	1	0.93	1.00	0.13	3.25	0.51	0.63
3	MDD3/0-3801W	3/8	2	1	0.91	1.00	0.13	3.30	0.51	0.63
4	MDD3/0-1243W	1/2	2	1-3/4	0.91	1.00	0.13	4.48	0.51	0.63
5	MDD3/0-1458WNT	1/4	2	5/8	0.60	1.00	0.13	2.73	0.51	0.63
6	MDD3/0-5601WNT	5/16	2	1	0.60	1.00	0.13	3.26	0.51	0.63
7	MDD3/0-3801WNT	3/8	2	1	0.60	1.00	0.13	3.30	0.51	0.63
8	MDDL3/0-1434/W	1/4	2	3/4	0.91	1.50	0.12	3.32	0.51	0.63
9	MDDL3/0-3801/W	3/8	2	1	0.91	1.50	0.12	3.76	0.51	0.63
10	MDDL3/0-1243/W	1/2	2	1-3/4	0.91	1.50	0.13	4.95	0.51	0.63

3/0 AWG Grounding Lug/Orange Printed/45° Angle

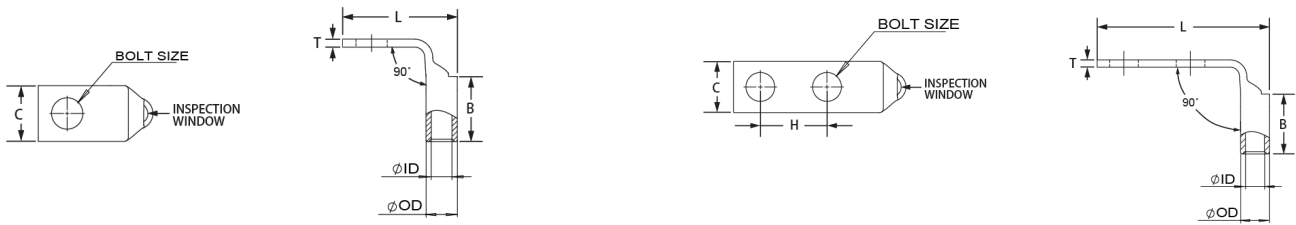


ITEM #	Part No#	BOLT SIZE	Holes	Hole Spacing	Tang Width	Barrel length	Tang Thickness	Over all length	Inner diameter	Outer diameter
			QTY	H (inch)	C (inch)	B (inch)	T (inch)	L (inch)	ID (inch)	OD (inch)
1	MD3/0-56HW	5/16	1	/	0.91	1.00	0.13	1.90	0.51	0.63
2	MD3/0-38HW	3/8	1	/	0.91	1.00	0.13	1.96	0.51	0.63
3	MD3/0-12HW	1/2	1	/	0.91	1.00	0.13	2.21	0.51	0.63
4	MDL3/0-38H/W	3/8	1	/	0.91	1.50	0.13	2.33	0.51	0.63
5	MDL3/0-12H/W	1/2	1	/	0.91	1.50	0.13	2.58	0.51	0.63

ITEM #	Part No#	BOLT SIZE	Holes	Hole Spacing	Tang Width	Barrel length	Tang Thickness	Over all length	Inner diameter	Outer diameter
			QTY	H (inch)	C (inch)	B (inch)	T (inch)	L (inch)	ID (inch)	OD (inch)
1	MDD3/0-1434HW	1/4	2	3/4	0.91	1.00	0.13	2.50	0.51	0.63
2	MDD3/0-3801HW	3/8	2	1	0.91	1.00	0.13	2.90	0.51	0.63
3	MDD3/0-1243HW	1/2	2	1-3/4	0.91	1.00	0.13	4.08	0.51	0.63
4	MDDL3/0-1434H/W	1/4	2	3/4	0.91	1.50	0.12	3.02	0.51	0.63
5	MDDL3/0-3801H/W	3/8	2	1	0.91	1.50	0.12	3.33	0.51	0.63
6	MDDL3/0-1201H/W	1/2	2	1	0.91	1.50	0.13	3.58	0.51	0.63
7	MDDL3/0-1243H/W	1/2	2	1-3/4	0.91	1.50	0.13	4.50	0.51	0.63

Notice: Any dimension difference, please contact us to confirm.

3/0 AWG Grounding Lug/Orange Printed/90° Angle



ITEM #	Part No#	BOLT SIZE	Holes	Hole Spacing	Tang Width	Barrel length	Tang Thickness	Over all length	Inner diameter	Outer diameter
			QTY	H (inch)	C (inch)	B (inch)	T (inch)	L (inch)	ID (inch)	OD (inch)
1	MD3/0-56FW	5/16	1	/	0.91	1.00	0.13	1.67	0.51	0.63
2	MD3/0-38FW	3/8	1	/	0.91	1.00	0.13	1.73	0.51	0.63
3	MD3/0-12FW	1/2	1	/	0.91	1.00	0.13	1.98	0.51	0.63
4	MDL3/0-38F/W	3/8	1	/	0.91	1.50	0.13	2.35	0.51	0.63
5	MDL3/0-12F/W	1/2	1	/	0.91	1.50	0.13	2.35	0.51	0.63

ITEM #	Part No#	BOLT SIZE	Holes	Hole Spacing	Tang Width	Barrel length	Tang Thickness	Over all length	Inner diameter	Outer diameter
			QTY	H (inch)	C (inch)	B (inch)	T (inch)	L (inch)	ID (inch)	OD (inch)
1	MDD3/0-1434FW	1/4	2	3/4	0.91	1.00	0.13	2.40	0.51	0.63
2	MDD3/0-3801FW	3/8	2	1	0.91	1.00	0.13	2.70	0.51	0.63
3	MDD3/0-1243FW	1/2	2	1-3/4	0.91	1.00	0.13	3.80	0.51	0.63
4	MDDL3/0-1434F/W	1/4	2	3/4	0.91	1.50	0.12	2.42	0.51	0.63
5	MDDL3/0-3801F/W	3/8	2	1	0.91	1.50	0.12	2.73	0.51	0.63
6	MDDL3/0-1201F/W	1/2	2	1	0.91	1.50	0.13	2.98	0.51	0.63
7	MDDL3/0-1243F/W	1/2	2	1-3/4	0.91	1.50	0.13	3.89	0.51	0.63

Notice: Any dimension difference, please contact us to confirm.

Code Conductor, For 4/0 AWG Cable

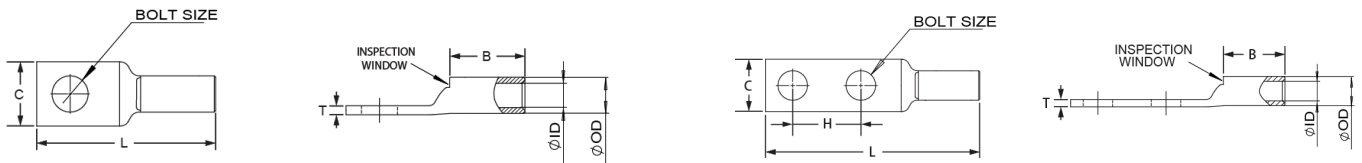
- Cable lugs are connecting devices used primarily for terminating and joining cable and wire conductors in electrical installations and equipment.
- These lugs are used for severe-duty applications and have thicker walls for greater strength and conductivity.
- Suitable for various copper cable and wire types, as long as the correct size is selected and the relevant "crimping" method is used.
- Manufactured from high conductivity copper which is tin plated to prevent corrosion.
- Easy to use in conjunction with mechanical or hydraulic crimping equipment.
- Color-Coded for Easy Identification.



Specifications

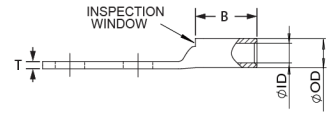
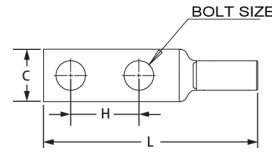
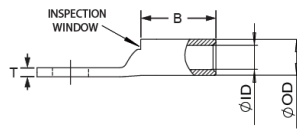
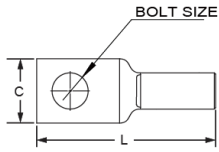
Material	Copper	Tongue Angle	Straight, 45°, 90°
Finish/Coating	Tin-Plated, Nickel-Plated	Barrel Type	Standard, Long, With or Without Inspection Window
Wire Range	4/0 AWG	Tongue Type	Standard, Narrow
Color Code	Purple	Certification	UL, RoHS, ISO9001
Bolt Size	1/4, 5/16, 3/8, 1/2	Customizable	Yes

4/0 AWG Grounding Lug/Purple Printed/Straight Type



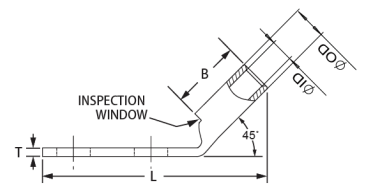
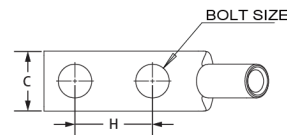
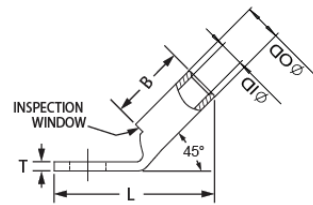
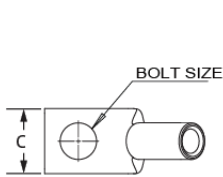
ITEM #	Part No#	BOLT SIZE	Holes	Hole Spacing	Tang Width	Barrel length	Tang Thickness	Over all length	Inner diameter	Outer diameter
			QTY	H (inch)	C (inch)	B (inch)	T (inch)	L (inch)	ID (inch)	OD (inch)
1	MD4/0-14W	1/4	1	/	1.02	0.88	0.14	1.96	0.56	0.70
2	MD4/0-56W	5/16	1	/	1.02	0.88	0.14	2.08	0.56	0.70
3	MD4/0-38W	3/8	1	/	1.02	0.88	0.14	2.21	0.56	0.70
4	MD4/0-12W	1/2	1	/	1.02	0.88	0.14	2.46	0.56	0.70
5	MD4/0-34W	3/4	1	/	1.05	0.88	0.13	2.90	0.56	0.70
6	MD4/0-14WNT	1/4	1	/	0.76	0.88	0.14	2.60	0.56	0.70
7	MD4/0-56WNT	5/16	1	/	0.70	0.88	0.14	2.09	0.56	0.70
8	MD4/0-38WNT	3/8	1	/	0.76	0.88	0.14	2.67	0.56	0.70
9	MDL4/0-38 /W	3/8	1	/	1.02	1.62	0.14	2.98	0.56	0.70
10	MDL4/0-12 /W	1/2	1	/	1.02	1.62	0.14	3.23	0.56	0.70

Notice: Any dimension difference, please contact us to confirm.



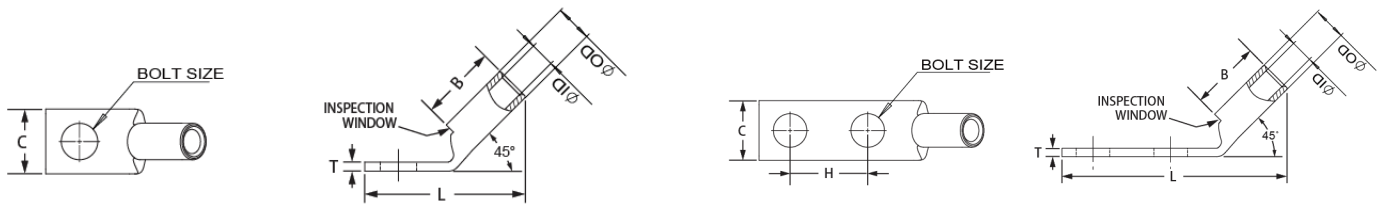
ITEM #	Part No#	BOLT SIZE	Holes	Hole Spacing	Tang Width	Barrel length	Tang Thickness	Over all length	Inner diameter	Outer diameter
			QTY	H (inch)	C (inch)	B (inch)	T (inch)	L (inch)	ID (inch)	OD (inch)
1	MDDS4/0-1434W	1/4	2	3/4	1.02	0.88	0.14	2.78	0.56	0.70
2	MDDS4/0-1401W	1/4	2	1	1.02	0.88	0.14	3.03	0.56	0.70
3	MDDS4/0-5643W	5/16	2	1-3/4	1.02	0.88	0.14	3.84	0.56	0.70
4	MDDS4/0-3834W	3/8	2	3/4	1.02	0.88	0.14	2.97	0.56	0.70
5	MDDS4/0-3801W	3/8	2	1	1.02	0.88	0.14	3.22	0.56	0.70
6	MDDS4/0-1243W	1/2	2	1-3/4	1.02	0.88	0.14	4.41	0.56	0.70
7	MDD4/0-1434W	1/4	2	3/4	1.02	1.19	0.14	3.10	0.56	0.70
8	MDD4/0-3801W	3/8	2	1	1.02	1.19	0.14	3.44	0.56	0.70
9	MDD4/0-1243W	1/2	2	1-3/4	1.02	1.19	0.14	4.58	0.56	0.70
10	MDD4/0-1458WNT	1/4	2	5/8	0.76	0.88	0.13	2.65	0.56	0.70
11	MDDL4/0-1458 /W	1/4	2	5/8	1.02	1.62	0.14	3.30	0.56	0.70
12	MDDL4/0-1434 /W	1/4	2	3/4	1.02	1.62	0.14	3.55	0.56	0.70
13	MDDL4/0-3801 /W	3/8	2	1	1.02	1.62	0.14	3.99	0.56	0.70
14	MDDL4/0-3843 /W	3/8	2	1-3/4	1.02	1.62	0.14	4.74	0.56	0.70
15	MDDL4/0-1243 /W	1/2	2	1-3/4	1.02	1.62	0.14	5.15	0.56	0.70

4/0 AWG Grounding Lug/Purple Printed/45° Angle



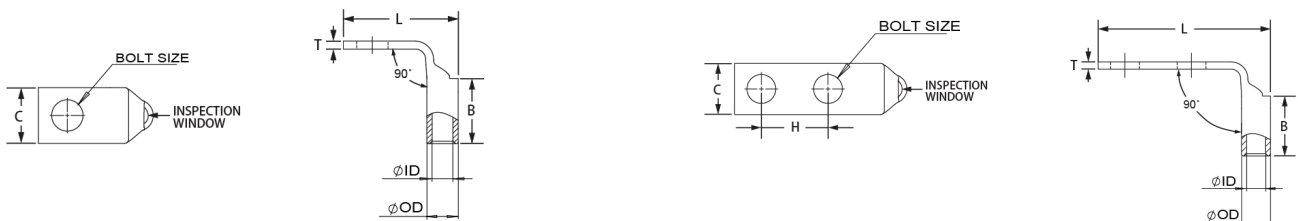
ITEM #	Part No#	BOLT SIZE	Holes	Hole Spacing	Tang Width	Barrel length	Tang Thickness	Over all length	Inner diameter	Outer diameter
			QTY	H (inch)	C (inch)	B (inch)	T (inch)	L (inch)	ID (inch)	OD (inch)
1	MD4/0-14HW	1/4	1	/	1.02	1.06	0.14	1.96	0.56	0.70
2	MD4/0-56HW	5/16	1	/	1.02	1.06	0.14	1.98	0.56	0.70
3	MD4/0-38HW	3/8	1	/	1.02	1.06	0.14	2.05	0.56	0.70
4	MD4/0-12HW	1/2	1	/	1.02	1.06	0.14	2.28	0.56	0.70
5	MDL4/0-38H/W	3/8	1	/	1.02	1.62	0.14	2.48	0.56	0.70
6	MDL4/0-12H/W	1/2	1	/	1.02	1.62	0.14	2.67	0.56	0.70

Notice: Any dimension difference, please contact us to confirm.



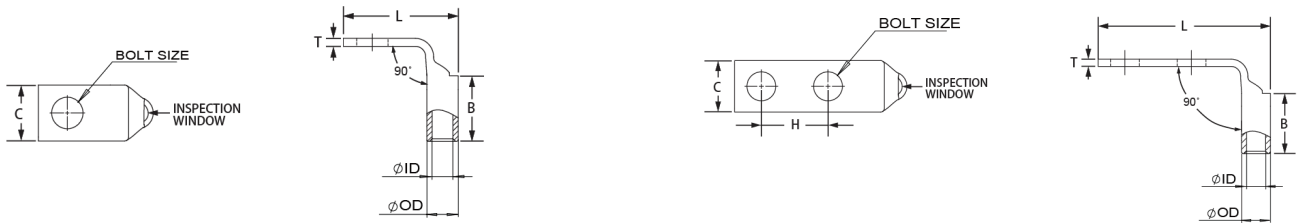
ITEM #	Part No#	BOLT SIZE	Holes	Hole Spacing	Tang Width	Barrel length	Tang Thickness	Over all length	Inner diameter	Outer diameter
			QTY	H (inch)	C (inch)	B (inch)	T (inch)	L (inch)	ID (inch)	OD (inch)
1	MDDS4/0-1434HW	1/4	2	3/4	1.02	0.88	0.14	2.50	0.56	0.70
2	MDDS4/0-1401HW	1/4	2	1	1.02	0.88	0.14	2.75	0.56	0.70
3	MDDS4/0-5643HW	5/16	2	1-3/4	1.02	0.88	0.14	3.50	0.56	0.70
4	MDDS4/0-3834HW	3/8	2	3/4	1.02	0.88	0.14	2.58	0.56	0.70
5	MDDS4/0-3801HW	3/8	2	1	1.02	0.88	0.14	2.83	0.56	0.70
6	MDDS4/0-1243HW	1/2	2	1-3/4	1.02	0.88	0.14	3.97	0.56	0.70
7	MDD4/0-1434HW	1/4	2	3/4	1.02	1.19	0.14	2.72	0.56	0.70
8	MDD4/0-3801HW	3/8	2	1	1.02	1.19	0.14	3.05	0.56	0.70
9	MDD4/0-1243HW	1/2	2	1-3/4	1.02	1.19	0.14	4.19	0.56	0.70
10	MDDL4/0-1458H/W	1/4	2	5/8	1.02	1.62	0.14	2.88	0.56	0.70
11	MDDL4/0-1434H/W	1/4	2	3/4	1.02	1.62	0.14	3.04	0.56	0.70
12	MDDL4/0-5601H/W	5/16	2	1	1.02	1.62	0.14	3.37	0.56	0.70
13	MDDL4/0-3801H/W	3/8	2	1	1.02	1.62	0.14	3.35	0.56	0.70
14	MDDL4/0-3843H/W	3/8	2	1-3/4	1.02	1.62	0.14	4.10	0.56	0.70
15	MDDL4/0-1201H/W	1/2	2	1	1.02	1.62	0.14	3.67	0.56	0.70
16	MDDL4/0-1243H/W	1/2	2	1-3/4	1.02	1.62	0.14	4.48	0.56	0.70

4/0 AWG Grounding Lug/Purple Printed/90° Angle



ITEM #	Part No#	BOLT SIZE	Holes	Hole Spacing	Tang Width	Barrel length	Tang Thickness	Over all length	Inner diameter	Outer diameter
			QTY	H (inch)	C (inch)	B (inch)	T (inch)	L (inch)	ID (inch)	OD (inch)
1	MD4/0-14FW	1/4	1	/	1.02	1.06	0.14	1.75	0.56	0.70
2	MD4/0-56FW	5/16	1	/	1.02	1.06	0.14	1.77	0.56	0.70
3	MD4/0-38FW	3/8	1	/	1.02	1.06	0.14	1.84	0.56	0.70
4	MD4/0-12FW	1/2	1	/	1.02	1.06	0.14	2.07	0.56	0.70
5	MDL4/0-38F/W	3/8	1	/	1.02	1.62	0.14	2.48	0.56	0.70
6	MDL4/0-12F/W	1/2	1	/	1.02	1.62	0.14	2.48	0.56	0.70

Notice: Any dimension difference, please contact us to confirm.



ITEM #	Part No#	BOLT SIZE	Holes	Hole Spacing	Tang Width	Barrel length	Tang Thickness	Over all length	Inner diameter	Outer diameter
			QTY	H (inch)	C (inch)	B (inch)	T (inch)	L (inch)	ID (inch)	OD (inch)
1	MDD4/0-1434FW	1/4	2	3/4	1.02	1.19	0.14	2.50	0.56	0.70
2	MDD4/0-3801FW	3/8	2	1	1.02	1.19	0.14	2.84	0.56	0.70
3	MDD4/0-1243FW	1/2	2	1-3/4	1.02	1.19	0.14	3.98	0.56	0.70
4	MDDL4/0-1458F/W	1/4	2	5/8	1.02	1.62	0.14	2.38	0.56	0.70
5	MDDL4/0-1434F/W	1/4	2	3/4	1.02	1.62	0.14	2.50	0.56	0.70
6	MDDL4/0-5601F/W	5/16	2	1	1.02	1.62	0.14	2.77	0.56	0.70
7	MDDL4/0-3801F/W	3/8	2	1	1.02	1.62	0.14	2.84	0.56	0.70
8	MDDL4/0-3843F/W	3/8	2	1-3/4	1.02	1.62	0.14	3.59	0.56	0.70
9	MDDL4/0-1201F/W	1/2	2	1	1.02	1.62	0.14	3.07	0.56	0.70
10	MDDL4/0-1243F/W	1/2	2	1-3/4	1.02	1.62	0.14	3.98	0.56	0.70

Notice: Any dimension difference, please contact us to confirm.

Code Conductor, For 250KCM Cable

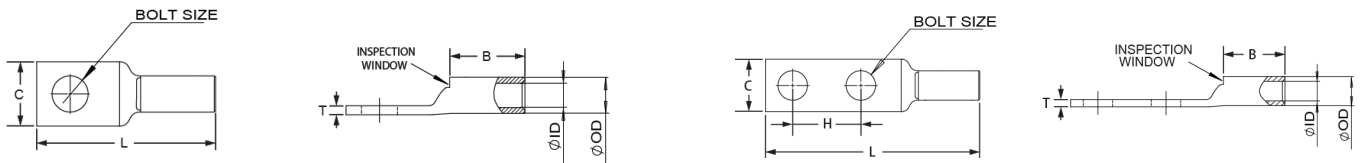
- Cable lugs are connecting devices used primarily for terminating and joining cable and wire conductors in electrical installations and equipment.
- These lugs are used for severe-duty applications and have thicker walls for greater strength and conductivity.
- Suitable for various copper cable and wire types, as long as the correct size is selected and the relevant "crimping" method is used.
- Manufactured from high conductivity copper which is tin plated to prevent corrosion.
- Easy to use in conjunction with mechanical or hydraulic crimping equipment.
- Color-Coded for Easy Identification.



Specifications

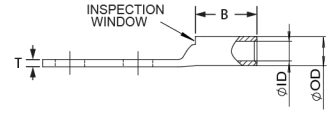
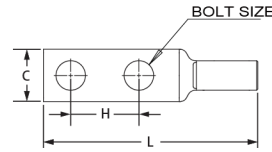
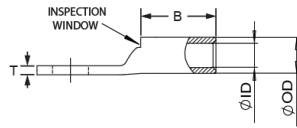
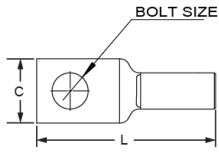
Material	Copper	Tongue Angle	Straight, 45°, 90°
Finish/Coating	Tin-Plated, Nickel-Plated	Barrel Type	Standard, Long, With or Without Inspection Window
Wire Range	250KCM	Tongue Type	Standard, Narrow
Color Code	Yellow	Certification	UL, RoHS, ISO9001
Bolt Size	1/4, 5/16, 3/8, 1/2, 7/8	Customizable	Yes

250KCM Grounding Lug/Yellow Printed/Straight Type



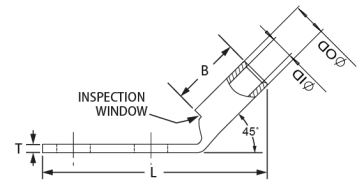
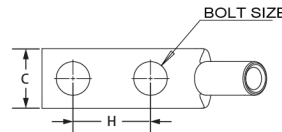
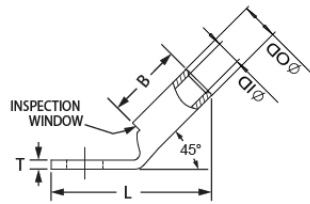
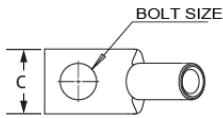
ITEM #	Part No#	BOLT SIZE	Holes	Hole Spacing	Tang Width	Barrel length	Tang Thickness	Over all length	Inner diameter	Outer diameter
			QTY	H (inch)	C (inch)	B (inch)	T (inch)	L (inch)	ID (inch)	OD (inch)
1	MD250-14W	1/4	1	/	1.11	1.06	0.15	2.23	0.63	0.77
2	MD250-56W	5/16	1	/	1.11	1.06	0.15	2.29	0.63	0.77
3	MD250-38W	3/8	1	/	1.11	1.06	0.15	2.42	0.63	0.77
4	MD250-12W	1/2	1	/	1.11	1.06	0.15	2.67	0.63	0.77
5	MD250-78W	7/8	1	/	1.11	1.06	0.15	3.36	0.63	0.77
6	MD250-14WNT	1/4	1	/	0.90	1.06	0.15	2.22	0.63	0.77
7	MD250-56WNT	5/16	1	/	0.90	1.06	0.15	2.49	0.63	0.77
8	MD250-38WNT	3/8	1	/	0.90	1.06	0.15	2.96	0.63	0.77
9	MD250-12WNT	1/2	1	/	0.90	1.06	0.15	3.08	0.63	0.77
10	MDL250-78/W	7/8	1	/	1.25	1.62	0.15	3.85	0.63	0.77

Notice: Any dimension difference, please contact us to confirm.



ITEM #	Part No#	BOLT SIZE	Holes	Hole Spacing	Tang Width	Barrel length	Tang Thickness	Over all length	Inner diameter	Outer diameter
			QTY	H (inch)	C (inch)	B (inch)	T (inch)	L (inch)	ID (inch)	OD (inch)
11	MDL250-38/W	3/8	1	/	1.11	1.62	0.16	2.98	0.63	0.77
12	MDL250-12/W	1/2	1	/	1.11	1.62	0.16	3.23	0.63	0.77

250KCM Grounding Lug/Yellow Printed/45° Angle

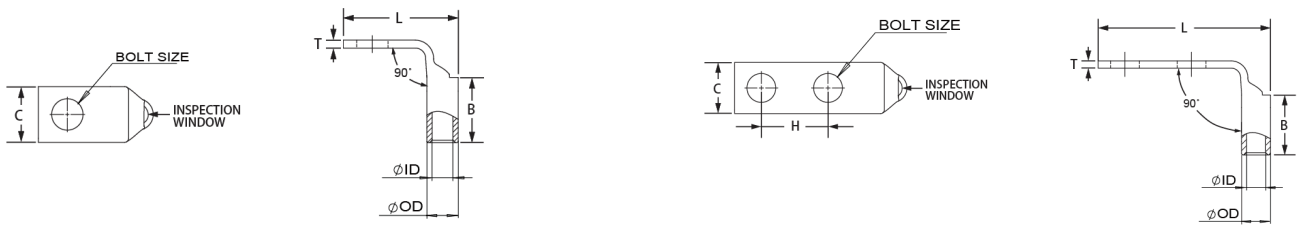


ITEM #	Part No#	BOLT SIZE	Holes	Hole Spacing	Tang Width	Barrel length	Tang Thickness	Over all length	Inner diameter	Outer diameter
			QTY	H (inch)	C (inch)	B (inch)	T (inch)	L (inch)	ID (inch)	OD (inch)
1	MD250-14HW	1/4	1	/	1.11	1.06	0.15	1.89	0.63	0.77
2	MD250-56HW	5/16	1	/	1.11	1.06	0.15	1.90	0.63	0.77
3	MD250-38HW	3/8	1	/	1.11	1.06	0.15	1.97	0.63	0.77
4	MD250-12HW	1/2	1	/	1.11	1.06	0.15	2.20	0.63	0.77
5	MDL250-12H/W	1/2	1	/	1.11	1.62	0.14	2.74	0.63	0.77
6	MDL250-78H/W	7/8	1	/	1.25	1.62	0.12	3.27	0.63	0.77

ITEM #	Part No#	BOLT SIZE	Holes	Hole Spacing	Tang Width	Barrel length	Tang Thickness	Over all length	Inner diameter	Outer diameter
			QTY	H (inch)	C (inch)	B (inch)	T (inch)	L (inch)	ID (inch)	OD (inch)
1	MDDL250-3801HW	3/8	2	1	1.14	1.25	0.15	3.13	0.63	0.77
2	MDDL250-1243HW	1/2	2	1-3/4	1.14	1.25	0.15	4.27	0.63	0.77
3	MDDL250-5601H/W	5/16	2	1	1.14	1.62	0.15	3.31	0.63	0.77
4	MDDL250-3801H/W	3/8	2	1	1.14	1.62	0.15	3.51	0.63	0.77
5	MDDL250-1201H/W	1/2	2	1	1.14	1.62	0.15	3.74	0.63	0.77
6	MDDL250-1243H/W	1/2	2	1-3/4	1.14	1.62	0.15	4.65	0.63	0.77

Notice: Any dimension difference, please contact us to confirm.

250KCM Grounding Lug/Yellow Printed/90° Angle



ITEM #	Part No#	BOLT SIZE	Holes	Hole Spacing	Tang Width	Barrel length	Tang Thickness	Over all length	Inner diameter	Outer diameter
			QTY	H (inch)	C (inch)	B (inch)	T (inch)	L (inch)	ID (inch)	OD (inch)
1	MD250-14FW	1/4	1	/	1.11	1.06	0.15	1.82	0.63	0.77
2	MD250-56FW	5/16	1	/	1.11	1.06	0.15	1.83	0.63	0.77
3	MD250-38FW	3/8	1	/	1.11	1.06	0.15	1.90	0.63	0.77
4	MD250-12FW	1/2	1	/	1.11	1.06	0.15	2.13	0.63	0.77
5	MDL250-12F/W	1/2	1	/	1.11	1.62	0.14	2.54	0.63	0.77
6	MDL250-78F/W	7/8	1	/	1.25	1.62	0.12	2.58	0.63	0.77

ITEM #	Part No#	BOLT SIZE	Holes	Hole Spacing	Tang Width	Barrel length	Tang Thickness	Over all length	Inner diameter	Outer diameter
			QTY	H (inch)	C (inch)	B (inch)	T (inch)	L (inch)	ID (inch)	OD (inch)
1	MDD250-3801FW	3/8	2	1	1.14	1.25	0.15	2.90	0.63	0.77
2	MDD250-1243FW	1/2	2	1-3/4	1.14	1.25	0.15	4.04	0.63	0.77
3	MDDL250-5601F/W	5/16	2	1	1.14	1.62	0.15	2.83	0.63	0.77
4	MDDL250-3801F/W	3/8	2	1	1.14	1.62	0.15	2.90	0.63	0.77
5	MDDL250-1201F/W	1/2	2	1	1.14	1.62	0.15	3.13	0.63	0.77
6	MDDL250-1243F/W	1/2	2	1-3/4	1.14	1.62	0.15	4.04	0.63	0.77

Notice: Any dimension difference, please contact us to confirm.

Code Conductor, For 500KCM Cable

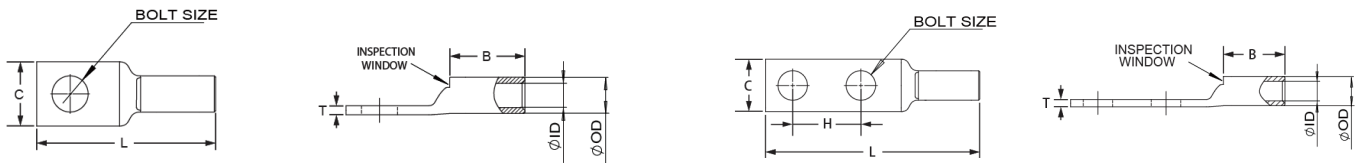
- Cable lugs are connecting devices used primarily for terminating and joining cable and wire conductors in electrical installations and equipment.
- These lugs are used for severe-duty applications and have thicker walls for greater strength and conductivity.
- Suitable for various copper cable and wire types, as long as the correct size is selected and the relevant "crimping" method is used.
- Manufactured from high conductivity copper which is tin plated to prevent corrosion.
- Easy to use in conjunction with mechanical or hydraulic crimping equipment.
- Color-Coded for Easy Identification.



Specifications

Material	Copper	Tongue Angle	Straight, 45°, 90°
Finish/Coating	Tin-Plated, Nickel-Plated	Barrel Type	Standard, Long, With or Without Inspection Window
Wire Range	500KCM	Tongue Type	Standard, Narrow
Color Code	Brown	Certification	UL, RoHS, ISO9001
Bolt Size	3/8, 1/2	Customizable	Yes

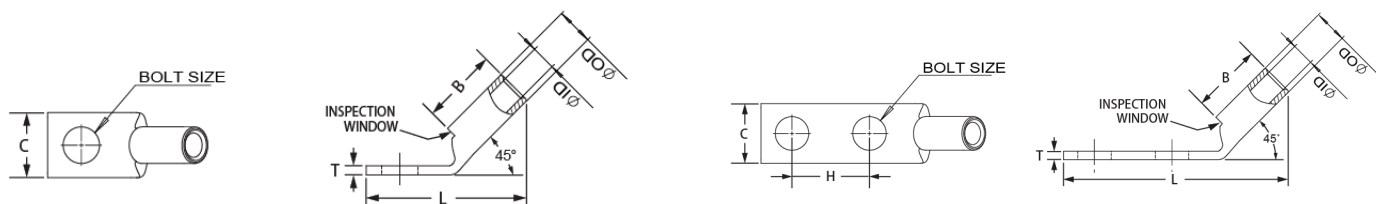
500KCM Grounding Lug/Brown Printed/Straight Type



ITEM #	Part No#	BOLT SIZE	Holes	Hole Spacing	Tang Width	Barrel length	Tang Thickness	Over all length	Inner diameter	Outer diameter
			QTY	H (inch)	C (inch)	B (inch)	T (inch)	L (inch)	ID (inch)	OD (inch)
1	MDDL500-3801/W	3/8	2	1	1.55	2.25	0.23	4.85	0.84	1.06
2	MDDL500-1434/W	1/4	2	3/4	1.55	2.25	0.23	4.46	0.84	1.06
3	MDDL500-1243/W	1/2	2	1-3/4	1.55	2.25	0.23	6.04	0.84	1.06

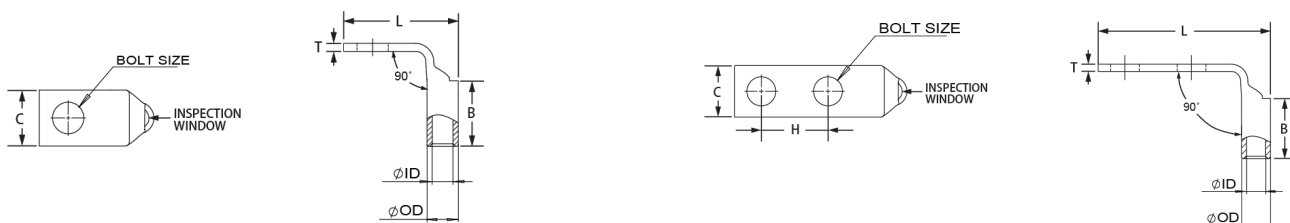
Notice: Any dimension difference, please contact us to confirm.

500KCM Grounding Lug/Brown Printed/45° Angle



ITEM #	Part No#	BOLT SIZE	Holes	Hole Spacing	Tang Width	Barrel length	Tang Thickness	Over all length	Inner diameter	Outer diameter
			QTY	H (inch)	C (inch)	B (inch)	T (inch)	L (inch)	ID (inch)	OD (inch)
1	MDDL500-3801H/W	3/8	2	1	1.55	2.25	0.23	4.29	0.84	1.06
2	MDDL500-1243H/W	1/2	2	1-3/4	1.55	2.25	0.23	5.46	0.84	1.06

500KCM Grounding Lug/Brown Printed/90° Angle



ITEM #	Part No#	BOLT SIZE	Holes	Hole Spacing	Tang Width	Barrel length	Tang Thickness	Over all length	Inner diameter	Outer diameter
			QTY	H (inch)	C (inch)	B (inch)	T (inch)	L (inch)	ID (inch)	OD (inch)
1	MDDL500-3801F/W	3/8	2	1	1.55	2.25	0.23	3.13	0.84	1.06
2	MDDL500-1243F/W	1/2	2	1-3/4	1.55	2.25	0.23	4.31	0.84	1.06

Notice: Any dimension difference, please contact us to confirm.

Code Conductor, For 600KCM Cable

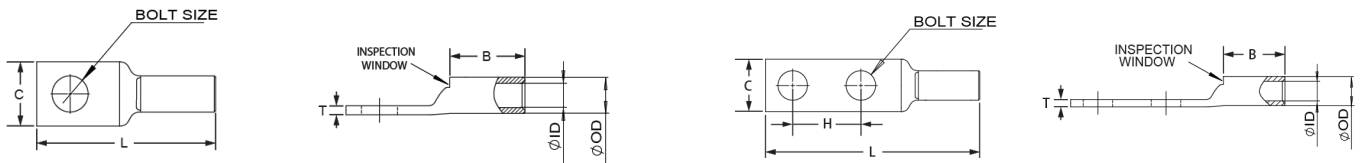
- Cable lugs are connecting devices used primarily for terminating and joining cable and wire conductors in electrical installations and equipment.
- These lugs are used for severe-duty applications and have thicker walls for greater strength and conductivity.
- Suitable for various copper cable and wire types, as long as the correct size is selected and the relevant "crimping" method is used.
- Manufactured from high conductivity copper which is tin plated to prevent corrosion.
- Easy to use in conjunction with mechanical or hydraulic crimping equipment.
- Color-Coded for Easy Identification.



Specifications

Material	Copper	Tongue Angle	Straight, 45°, 90°
Finish/Coating	Tin-Plated, Nickel-Plated	Barrel Type	Standard, Long, With or Without Inspection Window
Wire Range	600KCM	Tongue Type	Standard, Narrow
Color Code	Green	Certification	UL, RoHS, ISO9001
Bolt Size	3/8, 1/2	Customizable	Yes

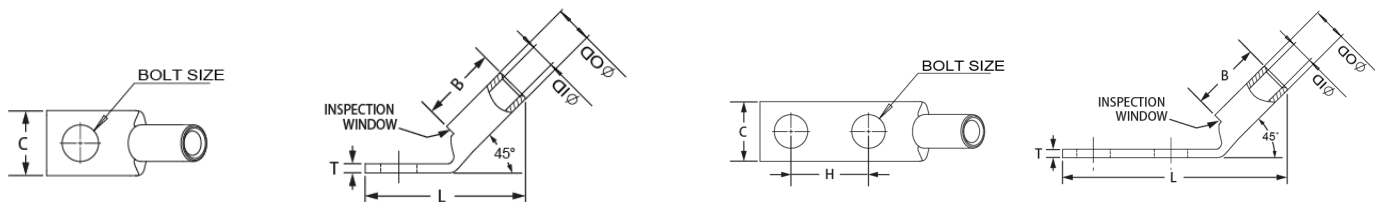
600KCM Grounding Lug/Green Printed/Straight Type



ITEM #	Part No#	BOLT SIZE	Holes	Hole Spacing	Tang Width	Barrel length	Tang Thickness	Over all length	Inner diameter	Outer diameter
			QTY	H (inch)	C (inch)	B (inch)	T (inch)	L (inch)	ID (inch)	OD (inch)
1	MDDL600-3801/W	3/8	2	1	1.70	2.69	0.26	5.20	0.92	1.19
2	MDDL600-1243/W	1/2	2	1-3/4	1.70	2.69	0.26	6.36	0.92	1.19

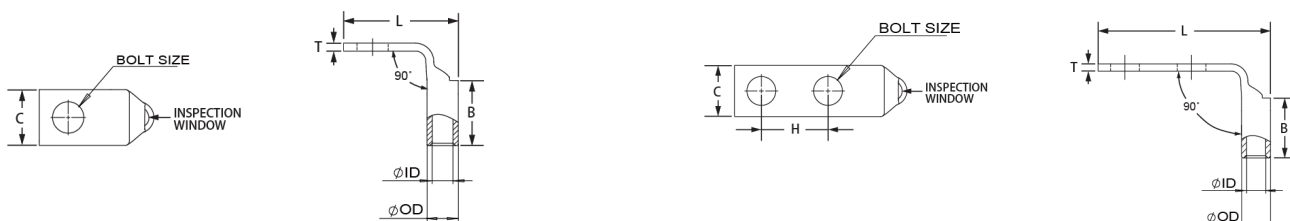
Notice: Any dimension difference, please contact us to confirm.

600KCM Grounding Lug/Green Printed/45° Angle



ITEM #	Part No#	BOLT SIZE	Holes	Hole Spacing	Tang Width	Barrel length	Tang Thickness	Over all length	Inner diameter	Outer diameter
			QTY	H (inch)	C (inch)	B (inch)	T (inch)	L (inch)	ID (inch)	OD (inch)
1	MDDL600-3801H/W	3/8	2	1	1.70	2.69	0.26	4.47	0.92	1.19
2	MDDL600-1243H/W	1/2	2	1-3/4	1.70	2.69	0.26	5.65	0.92	1.19

600KCM Grounding Lug/Green Printed/90° Angle



ITEM #	Part No#	BOLT SIZE	Holes	Hole Spacing	Tang Width	Barrel length	Tang Thickness	Over all length	Inner diameter	Outer diameter
			QTY	H (inch)	C (inch)	B (inch)	T (inch)	L (inch)	ID (inch)	OD (inch)
1	MDDL600-3801F/W	3/8	2	1	1.70	2.69	0.26	3.26	0.92	1.19
2	MDDL600-1243F/W	1/2	2	1-3/4	1.70	2.69	0.26	4.44	0.92	1.19

Notice: Any dimension difference, please contact us to confirm.

Cold Conductor, Long Barrel, Butt Splice

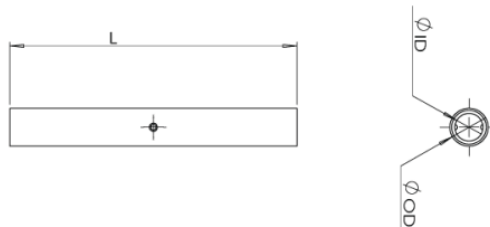
- Cable lugs are connecting devices used primarily for terminating and joining cable and wire conductors in electrical installations and equipment.
- These lugs are used for severe-duty applications and have thicker walls for greater strength and conductivity.
- Suitable for various copper cable and wire types, as long as the correct size is selected and the relevant "crimping" method is used.
- Manufactured from high conductivity copper which is tin plated to prevent corrosion.
- Easy to use in conjunction with mechanical or hydraulic crimping equipment.
- Color-Coded for Easy Identification.



Specifications

Material	Copper	Color Code	Red, Blue, Gray, Brown, Green, Pink, Black, Orange, Purple
Finish/Coating	Tin-Plated, Nickel-Plated	Certification	UL, RoHS, ISO9001
Wire Range	8 AWG, 6 AWG, 4 AWG, 2 AWG, 1 AWG, 1/0 AWG, 2/0 AWG, 3/0 AWG, 4/0 AWG	Customizable	Yes

Butt Splice Grounding Lug



ITEM #	Part No#	DIE COLOR	WIRE SIZE	Over all length	Inner diameter	Outer diameter
			STR	L (inch)	ID (inch)	OD (inch)
1	MD8STR	RED	8AWG	2.0	0.18	0.27
2	MD6STR	BLUE	6AWG	2.29	0.22	0.31
3	MD4STR	GRAY	4AWG	2.86	0.28	0.38
4	MD2STR	BROWN	2AWG	2.99	0.31	0.42
5	MD1STR	GREEN	1AWG	3.07	0.36	0.47
6	MD1/0STR	PINK	1/0AWG	3.08	0.39	0.52
7	MD2/0STR	BLACK	2/0AWG	3.30	0.45	0.58
8	MD3/0STR	ORANGE	3/0 AWG	3.30	0.51	0.63
9	MD4/0STR	PURPLE	4/0AWG	3.57	0.56	0.70

Notice: Any dimension difference, please contact us to confirm.

Cold Conductor, Four Holes

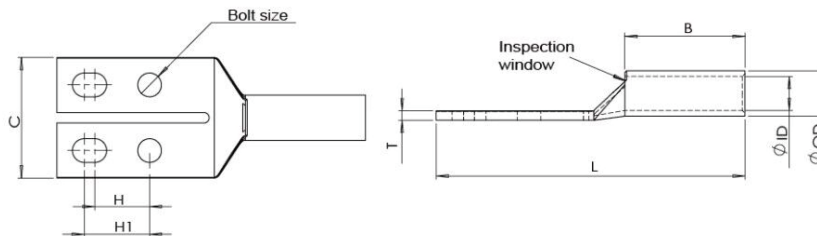
- Cable lugs are connecting devices used primarily for terminating and joining cable and wire conductors in electrical installations and equipment.
- These lugs are used for severe-duty applications and have thicker walls for greater strength and conductivity.
- Suitable for various copper cable and wire types, as long as the correct size is selected and the relevant "crimping" method is used.
- Manufactured from high conductivity copper which is tin plated to prevent corrosion.
- Easy to use in conjunction with mechanical or hydraulic crimping equipment.
- Color-Coded for Easy Identification.



Specifications

Material	Copper	Bolt Size	1/4, 3/8
Finish/Coating	Tin-Plated, Nickel-Plated	Tongue Angle	Straight
Wire Range	1/0 AWG, 2/0 AWG, 3/0 AWG, 4/0 AWG	Certification	UL, RoHS, ISO9001
Color Code	Pink, Black, Orange, Purple	Customizable	Yes

Four Holes Grounding Lug



ITEM #	Part No#	DIE COLOR	WIRE SIZE	BOLT SIZE	Hole Spacing		Barrel length	Tang Thickness	Over all length	Inner diameter	Outer diameter
					H (inch)	C (inch)					
1	MDF1/0-1458W	PINK	1/0AWG	1/4	5/8	1.38	0.88	0.11	3.05	0.39	0.52
2	MDFL1/0-14UW	PINK	1/0AWG	1/4	5/8-3/4	1.38	1.38	0.11	3.55	0.39	0.52
3	MDFL1/0-38UW	PINK	1/0AWG	3/8	1-1-1/8	1.63	1.38	0.11	3.93	0.39	0.52
4	MDF2/0-1458W	BLACK	2/0AWG	1/4	5/8	1.38	0.94	0.21	3.15	0.45	0.56
5	MDFL2/0-14UW	BLACK	2/0AWG	1/4	5/8-3/4	1.38	1.50	0.21	3.71	0.45	0.58
6	MDFL2/0-38UW	BLACK	2/0AWG	3/8	1-1-1/8	1.63	1.50	0.21	4.09	0.45	0.58
7	MDF3/0-1458W	ORANGE	3/0AWG	1/4	5/8	1.38	1.00	0.21	3.25	0.51	0.63
8	MDF4/0-1458W	PURPLE	4/0AWG	1/4	5/8	1.38	1.00	0.21	3.29	0.56	0.70
9	MDFL4/0-14UW	PURPLE	4/0AWG	1/4	5/8-3/4	1.38	1.62	0.21	3.91	0.56	0.70

Notice: Any dimension difference, please contact us to confirm.



Jiangsu Maxdao Technology Limited

33 Hailing Industrial Zone

Taizhou, Jiangsu 225300

China

Tel: +86 186 5260 9353

Email: sales@maxdao.com

Maxdao Inc

2532 Summit Ave #506, Plano, TX 75074, USA

Tel: +1 469 3040359

LinkedIn: Follow us on LinkedIn

www.linkedin.com/company/maxdao