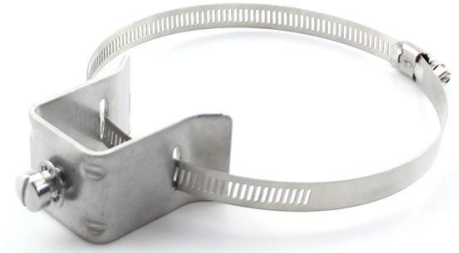


Tower Stand off Adapter Kit, 3/8 in tapped hole with 3-5 in Round Member Adapter

- **Manufactured by stainless steel**
- **Excellent for outdoor & indoor use**



Product Classification

Material Number	6002356
Part Number	-
Status	Active
Detail Description	Tower stand off adapter with 3/8 in tapped hole, 3-5 in round member adapter, 3/8 in screw and M10 internal-tooth lock washer

General Specifications

Material Type	Stainless steel 304
Color	Silver
Applied pole size	3-5 in

Dimensions

Tower stand off Height	2.346 in 59.6 mm
Tower stand off Width	1.5 in 38.1 mm
Tower stand off Length	2.205 in 56 mm
Tower stand off Thickness	0.106 in 2.7 mm
Round member adapter Width	0.492 in 12.5 mm
Round member adapter Thickness	0.024 in .0.6mm
Screw Size	3/8 in x 1/2 in
Washer Size	M10

Environmental Specifications

Operating Temperature	-40 °C to +85 °C (-40 °F to +185 °F)
Corrosion Resistance	≥96 hours in salt spray chamber,base on IEC 60068 -2-11

Packaging and Weights

Bag,Width	8.268 in 210 mm
-----------	-------------------



Bag,Length	14.567 in 370 mm
Included	Tower stand off adapter, round member adapter, screw, internal-tooth lock washer
UOM	Kit of 10
Packaging	Bag
Weight, gross	3.646 lb 1.654 kg

Certifications and Compliance

ISO 9001:2015	Designed, manufactured and/or distributed under this quality management system
RoHS	Compliant

