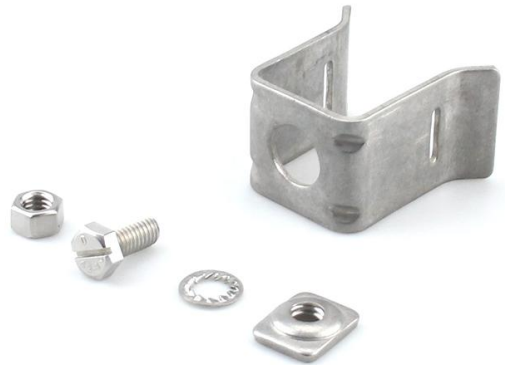


Tower Stand off Adapter Kit, 3/4 in hole with 3/8 in Hardware

- Manufactured by stainless steel
- Excellent for outdoor & indoor use
- Use with round member adapter



Product Classification

Material Number	6004701
Part Number	-
Status	Active
Detail Description	Tower stand off adapter with 3/4 in tapped hole, 3/8 in screw, M10 internal-tooth lock washer and 3/8 in insert nut

General Specifications

Material Type	Stainless steel 304
Color	Silver
Mounting	Mounting hole for round member adapter

Dimensions

Tower stand off Height	2.346 in 59.6 mm
Tower stand off Width	1.5 in 38.1 mm
Tower stand off Length	2.205 in 56 mm
Tower stand off Thickness	0.106 in 2.7 mm
Screw Size	3/8 in x 1/2 in
Washer Size	M10

Environmental Specifications

Operating Temperature	-40 °C to +85 °C (-40 °F to +185 °F)
Corrosion Resistance	≥96 hours in salt spray chamber, base on IEC 60068 -2-11

Packaging and Weights

Bag,Width	7.874 in 200 mm
Bag,Length	11.024 in 280 mm
Included	Tower stand off adapter, round member adapter, screw, internal-tooth lock washer, insert nut

For more information, please visit:
www.maxdao.com



©Copyright 2023 Maxdao Inc. All rights reserved.

The information contained herein is subject to change without notice. We reserve the right to make technical changes or modify the contents of this document without prior notice.

Revised: Mar 31, 2023

Public

UOM	Kit of 10
Packaging	Bag
Weight, gross	3.552 lb 1.611 kg

Certifications and Compliance

ISO 9001:2015	Designed, manufactured and/or distributed under this quality management system
RoHS	Compliant

