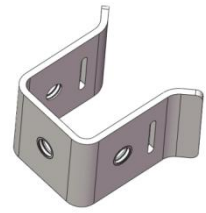


Tower Stand off Adapter, 3/8 in tapped hole

- Manufactured by stainless steel
- Excellent for outdoor & indoor use
- Install with 1/2 in banding or Hose Clamps



Product Classification

Material Code	6000439
Part Number	-
Status	Active
Detail Description	Tower Stand off adapter, 3/8 in-16UNC tapped hole

General Specifications

Material	Stainless steel 304
Color	Silver
Mounting Hole	3/8 in-16UNC tapped
Max Mounting Structure Width	14 mm

Dimensions

Height	56 mm 2.205 in
Width	38.1 mm 1.5 in
Length	59.6 mm 2.346 in
Thickness	2.7 mm 0.106 in

Environmental Specifications

Corrosion Resistance	≥ 96 hours in salt spray chamber, base on IEC 60068 -2-11
----------------------	---

Packaging and Weights

Height, packed	280 mm 11.02 in
Width, packed	200 mm 7.87 in
UOM	Kit of 10
Packaging	Bag
Weight, gross	1.126 kg 2.477 lb

Certifications and Compliance

ISO 9001:2015	Designed, manufactured and/or distributed under this quality management system
RoHS	Compliant

For more information, please visit:
www.maxdao.com



©Copyright 2023 Maxdao Inc. All rights reserved.

The information contained herein is subject to change without notice. We reserve the right to make technical changes or modify the contents of this document without prior notice.

Revised: Mar 27, 2023

Public