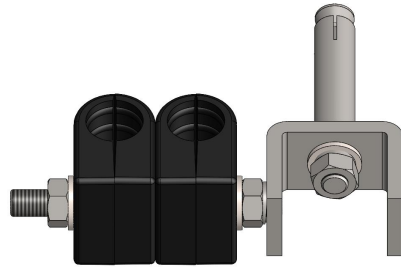


**Feeder Cable Wall Hanger Clamp ,for 1/2" Cable,2 way**

- Easy and quick installation
- Robust design & material for outdoor use
- Operation Temperature -40~85 °C
- Suitable for cable type 1/2 in

**Product Classification**

|                    |  |
|--------------------|--|
| Material Code      | 6006487  |
| Part Number        | -  |
| Status             | Active   |
| Detail Description | Feeder cable wall hanger clamp with expansion screw, for 1/2" cable,2 way, includes hardware and angle adapter |

**General Specifications**

|                   |               |
|-------------------|---------------|
| Material Parts    | Stainless +PP |
| Mounting          | M8 hardware   |
| Cables per hanger | 2             |
| Color             | Black         |

**Dimensions**

|                              |                  |
|------------------------------|------------------|
| Height                       | 36 mm   1.42 in  |
| Width                        | 88 mm   3.46 in  |
| Length                       | 116 mm   4.57 in |
| Compatible cable OD, maximum | 16 mm   0.63 in  |
| Compatible cable OD, minimum | 17 mm   0.67in   |

**Environmental Specifications**

|                                 |                                  |
|---------------------------------|----------------------------------|
| Salt spray test for metal parts | ≥48 Hours,base on ISO 9227: 2017 |
| Operating temperature           | -40°C ~ 85°C                     |

**Packaging and Weights**

|                            |                  |
|----------------------------|------------------|
| Height, packed             | 205 mm   8.1 in  |
| Width, packed              | 325 mm   12.8 in |
| Length, packed             | 495 mm   19.4 in |
| Packaging Quantity and UOM | 1 pcs            |

Weight, gross

0.201 kg | 0.45 lb

---

**Certifications and Compliance**

ISO 9001:2015

Designed, manufactured and/or distributed under this quality management system

ROHS

Compliant

