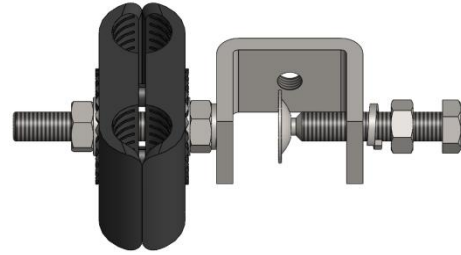


Feeder Cable Clamp,for 1/2" Cable,2 way

- Easy and quick installation
- Robust design & material for outdoor use
- Operation Temperature -40~85 °C
- Suitable for cable type 1/2 in

**Product Classification**

| | |
|--------------------|--|
| Material Code | 6005135 |
| Part Number | - |
| Status | Active |
| Detail Description | Feeder cable clamp,for 1/2" cable,2 way, includes hardware and angle adapter |

General Specifications

| | |
|-------------------|---------------|
| Material Parts | Stainless +PP |
| Mounting | M10 hardware |
| Cables per hanger | 2 |
| Color | Black |

Dimensions

| | |
|------------------------------|------------------|
| Height | 36 mm 1.42 in |
| Width | 60 mm 2.36 in |
| Length | 135 mm 5.31 in |
| Compatible cable OD, maximum | 16 mm 0.63 in |
| Compatible cable OD, minimum | 17 mm 0.67 in |

Environmental Specifications

| | |
|---------------------------------|----------------------------------|
| Salt spray test for metal parts | ≥48 Hours,base on ISO 9227: 2017 |
| Operating temperature | -40°C ~ 85°C |

Packaging and Weights

| | |
|----------------------------|------------------|
| Height, packed | 205 mm 8.1 in |
| Width, packed | 325 mm 12.8 in |
| Length, packed | 495 mm 19.4 in |
| Packaging Quantity and UOM | 1 pcs |

Weight, gross

0.18 kg | 0.4 lb

Certifications and Compliance

ISO 9001:2015

Designed, manufactured and/or distributed under this quality management system

ROHS

Compliant

