

## Copper Lug, AWG 8# , two hole 3/8", hole spacing 1", long barrel, without inspection window

- Copper cable lugs are designed for connecting copper cables, coils and Bus-bars
- Copper Tube Terminals between 6mm<sup>2</sup> & 800mm<sup>2</sup> have bell entry to ensure easy entry even for flexible conductors.
- The absence without inspection window prevents the entry of water or moisture into the crimped joint making these terminals suitable for outdoor applications.
- Long barrel provides high pull-out force and increased retention for improved mechanical and electrical performance.



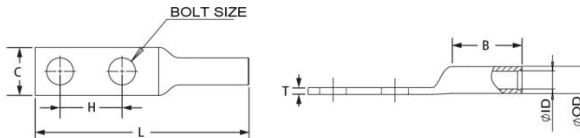
### Product Classification

Material Code	6004582
Part Number	-
Detail Description	Copper Lug, AWG 8# , two hole 3/8", hole spacing 1", long barrel, without inspection window

### General Specifications

Material	Copper
Tongue Type	Standard
Tongue Angle	Straight
Surface	Tin-plated
Inspection Window	Without inspection window

### Dimensions



Bolt Size	3/8 in   10.0 mm
Hole Spacing (H)	1.00 in   25.0 mm
Tang Width (C)	0.58 in   15.0 mm
Barrel length (B)	0.81 in   20.0 mm
Overall length (L)	2.89 in   70.0 mm
Inner diameter (ID)	0.16 in   4.2 mm
Outer diameter (OD)	0.27 in   6.9 mm

### Electrical Specifications

Rating - Maximum Voltage	35KV
--------------------------	------

### Environmental Specifications

For more information, please visit:  
www.maxdao.com



©Copyright 2023 Maxdao Inc. All rights reserved.  
The information contained herein is subject to change without notice. We reserve the right to make technical changes or modify the contents of this document without prior notice.  
Revised: Mar 08, 2023  
Public

Operating Temperature -40 °C to +90°C (-40 °F to +212 °F)

Storage Temperature -40 °C to +80 °C (-40 °F to +176 °F)

---

**Packaging and Weights**

---

Included	Lug
Packaging Quantity and UOM	1 pcs
Piece Weight	0.026 lb   0.012 kg

---

**Certifications**

---

ISO 9001:2015	Designed, manufactured and/or distributed under this quality management system
RoHS	Compliant
UL&CSA	Compliant

