

Copper Lug, AWG 4# two hole 3/8",hole spacing 1",long barrel, without inspection window

- Copper cable lugs are designed for connecting copper cables, coils and Bus-bars
- Copper Tube Terminals between 6mm² & 800mm² have bell entry to ensure easy entry even for flexible conductors.
- The absence without inspection window prevents the entry of water or moisture into the crimped joint making these terminals suitable for outdoor applications.
- Long barrel provides high pull-out force and increased retention for improved mechanical and electrical performance.
- "colour code" help choose the right connector, the colour name is also printed in order to avoid problems for those who are colour-blind.

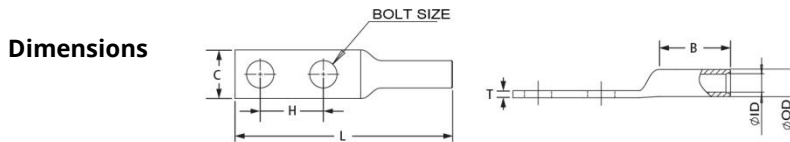


Product Classification

Material Code	6006586
Part Number	-
Detail Description	Copper Lug, AWG 4# ,two hole 3/8",hole spacing 1",long barrel, without inspection window

General Specifications

Colour Code	Gray
Material	Copper
Tongue Type	Standard
Tongue Angle	Straight
Surface	Tin-plated
Inspection Window	Without inspection window



Bolt Size	3/8 in 10.2 mm
Hole Spacing (H)	1.00 in 25.4 mm
Tang Width (C)	0.50 in 14.0 mm
Barrel length (B)	1.12 in 29.2 mm
Overall length (L)	2.70 in 72.6 mm
Inner diameter (ID)	0.28 in 7.2 mm

For more information, please visit:
www.maxdao.com



©Copyright 2023 Maxdao Inc. All rights reserved.
The information contained herein is subject to change without notice. We reserve the right to make technical changes or modify the contents of this document without prior notice.
Revised: Feb 24, 2023
Public

Outer diameter (OD) 0.38 in | 9.7 mm

Electrical Specifications

Rating - Maximum Voltage 35KV

Environmental Specifications

Operating Temperature -40 °C to +90°C (-40 °F to +212 °F)

Storage Temperature -40 °C to +80 °C (-40 °F to +176 °F)

Packaging and Weights

Included Lug

Packaging Quantity and UOM 1 pcs

Piece Weight 0.044 lb | 0.02 kg

Certifications

ISO 9001:2015 Designed, manufactured and/or distributed under this quality management system

RoHS Compliant

UL&CSA Compliant

