

Copper Lug, AWG 1250KCM, two hole 11/16", hole spacing 1-3/4", standard barrel, without inspection window

- Copper cable lugs are designed for connecting copper cables, coils and Bus-bars
- Copper Tube Terminals between 6mm² & 800mm² have bell entry to ensure easy entry even for flexible conductors.
- The absence without inspection window prevents the entry of water or moisture into the crimped joint making these terminals suitable for outdoor applications.
- The barrel length has been designed to allow easy and accurate positioning of the dies during the crimping operation.



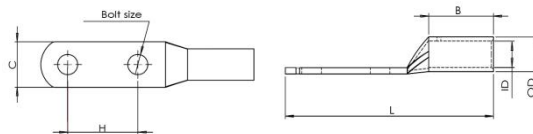
Product Classification

Material Code	6006715
Detail Description	Copper Lug, AWG 1250KCM, two hole 11/16", hole spacing 1-3/4", standard barrel, without inspection window

General Specifications

Material	Copper
Tongue Type	Standard
Tongue Angle	Straight
Surface	Tin-plated
Inspection Window	Without inspection window

Dimensions



Bolt Size	0.67 in 17.0 mm
Hole Spacing (H)	1.75 in 44.5 mm
Tang Width (C)	2.32 in 59.0 mm
Barrel length (B)	2.95 in 75.0 mm
Overall length (L)	7.10 in 180.0 mm
Inner diameter (ID)	1.37 in 35.0 mm
Outer diameter (OD)	1.77 in 45.0 mm

Electrical Specifications

Rating - Maximum Voltage	35KV
--------------------------	------

Environmental Specifications

Operating Temperature	-40 °C to +90°C (-40 °F to +212 °F)
-----------------------	-------------------------------------

For more information, please visit:
www.maxdao.com



©Copyright 2023 Maxdao Inc. All rights reserved.
 The information contained herein is subject to change without notice. We reserve the right to make technical changes or modify the contents of this document without prior notice.
 Revised: Mar 08, 2023
 Public

Storage Temperature -40 °C to +80 °C (-40 °F to +176 °F)

Packaging and Weights

Included	Lug
Packaging Quantity and UOM	1 pcs
Piece Weight	3.39 lb 1.54 kg

Certifications

ISO 9001:2015	Designed, manufactured and/or distributed under this quality management system
RoHS	Compliant

