

## Butt Splice , AWG 4#, long barrel

- Suitable for use in circuits rated 35KV or less, proper high voltage spacing and insulation techniques must be used
- Long barrel provides high pull-out force and increased retention for improved mechanical and electrical performance.
- Internal wire stops to prevent over-insertion of conductor.
- Seamless, high conductivity copper tubing for grounding and bonding applications
- "colour code" help choose the right connector, the colour name is also printed in order to avoid problems for those who are colour-blind.



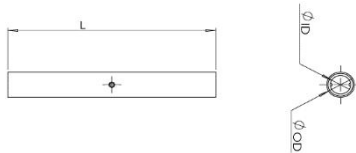
### Product Classification

Item Number	6003735
Part Number	-
Status	Active
Detail Description	Butt Splice , AWG 4#, long barrel

### General Specifications

Colour Code	Gray
Terminal Material	Copper
Surface	Tin-plated

### Dimensions



Overall length (L)	2.86 in   72.6 mm
Inner diameter (ID)	0.28 in   7.1 mm
Outer diameter (OD)	0.38 in   10.7 mm

### Electrical Specifications

Rating - Maximum Voltage	35 KV
--------------------------	-------

### Environmental Specifications

Operating Temperature	-40 °C to +90°C (-40 °F to +212 °F)
Storage Temperature	-40 °C to +80 °C (-40 °F to +176 °F)

### Packaging and Weights

Included	Butt Splice
----------	-------------



Packaging Quantity and UOM 1 Pcs  
Weight, gross 0.046 lb | 0.021 kg

---

**Certifications and Certificated**

---

ISO 9001:2015	Designed, manufactured and/or distributed under this quality management system
RoHS	Compliant
UL&CSA	Compliant

