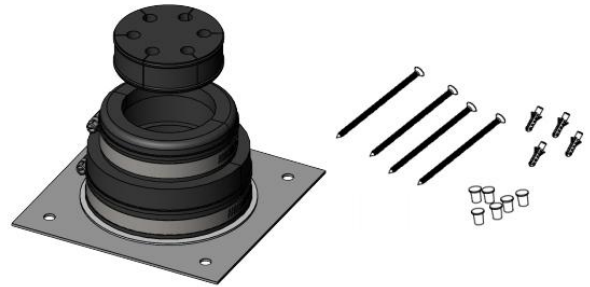


Cable Entry Assembly Kit, 4 in with 6 holes insert for 3/8" cable

- Quick and easy to install
- Good weatherproof performance
- Mounting hardware kit included



Product Classification

Material Number	6002147
Part Number	-
Status	Active
Detail Description	Cable entry assembly kit, 4 in with 6 holes insert for 3/8" cable, include 1 pcs 4 in single port entry panel, 1 kit 6 holes 3/8" boot assembly, 4 pcs M8x40mm wall plug, 4 pcs ST5.5x45mm tapping screw, 6 pcs cushion insert plug

General Specifications

Material	Aluminum entry panel & EPDM cushion insert and plug & Nylon wall plug & SUS304 tapping screw and hose clamp & Natural rubber boot
Entry panel port size	101.6 mm 4 in
Entry panel surface treatment method	Powder coating
Cable size	3/8"
Number of ports	1
Number of cable	6
Panel type	Multiple
Color	Gray & Black

Dimensions

Panel size (Length×Width×Height)	177.8 mm×177.8 mm×38mm 7 in×7 in×1.5 in
Tapping screw size	ST5.5×45 mm ST0.22 in×1.77 in
Wall plug size	M8×40 mm M8×1.57 in

Environmental Specifications

Operating temperature	-40°C to +85°C (-40°F to +185°F)
Waterproof resistance	IP66, based on ISO20653:2013

For more information, please visit:
www.maxdao.com



©Copyright 2023 Maxdao Inc. All rights reserved.

The information contained herein is subject to change without notice. We reserve the right to make technical changes or modify the contents of this document without prior notice.

Revised: Mar 20, 2023

Public

Packaging and Weights

Box length	381 mm 15 in
Box width	381 mm 15 in
Box height	76.2 mm 3 in
Packaging quantity and UOM	1 kit
Included	Boot assembly & Hardware kit & Entry panel
Weight gross	1.1 kg 2.425 lb

Certifications and Compliance

ISO 9001:2015	Designed, manufactured and/or distributed under this quality management system
RoHS	Compliant

