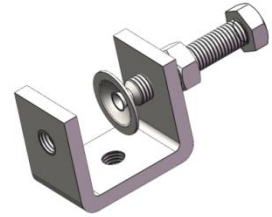


Angle Adapter, M10 tapped hole

- Manufactured by stainless steel
- Excellent for outdoor & indoor use
- Install with M10 Threaded rod



Product Classification

Material Code	6003687
Part Number	-
Status	Active
Detail Description	Angle Adapter, M10 tapped hole

General Specifications

Material Type	Stainless steel 304
Color	Silver
Attachment Mounting Hole	M10 tapped

Dimensions

Width	24 mm 0.944 in
Length	33 mm 1.299 in
Thickness	4.5 mm 0.177 in
Hex Bolt Size	M10 X 45 mm

Environmental Specifications

Corrosion Resistance	≥96 hours in salt spray chamber, base on IEC 60068 -2-11
----------------------	--

Packaging and Weights

Height, packed	200 mm 7.874 in
Width, packed	140 mm 5.512 in
UOM	Pcs
Packaging	Bag
Weight, gross	0.108 kg 0.238 lb

Certifications and Compliance

ISO 9001:2015	Designed, manufactured and/or distributed under this quality management system
---------------	--