

Butt Splice , AWG 6#, long barrel

- Suitable for use in circuits rated 35KV or less, proper high voltage spacing and insulation techniques must be used
- Long barrel provides high pull-out force and increased retention for improved mechanical and electrical performance.
- Internal wire stops to prevent over-insertion of conductor.
- Seamless, high conductivity copper tubing for grounding and bonding applications
- "colour code" help choose the right connector, the colour name is also printed in order to avoid problems for those who are colour-blind.



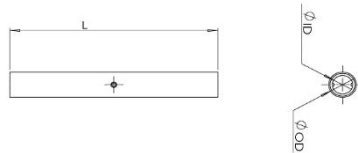
Product Classification

Item Number	6003855
Part Number	-
Status	Active
Detail Description	Butt Splice , AWG 6, long barrel

General Specifications

Colour Code	Blue
Terminal Material	Copper
Surface	Tin-plated

Dimensions



Overall length (L)	2.29 in 58.1 mm
Inner diameter (ID)	0.22 in 5.6 mm
Outer diameter (OD)	0.31 in 7.9 mm

Electrical Specifications

Rating - Maximum Voltage	35 KV
--------------------------	-------

Environmental Specifications

Operating Temperature	-40 °C to +90°C (-40 °F to +212 °F)
Storage Temperature	-40 °C to +80 °C (-40 °F to +176 °F)

Packaging and Weights

UOM	1 pcs
-----	-------



Packaging

Bag

Weight, gross

0.029 lb | 0.013 kg

Certifications and Certificated

ISO 9001:2015

Designed, manufactured and/or distributed under this quality management system

RoHS

Compliant

UL&CSA

Compliant

